

Impact of laser power and firing angle on coagulation efficiency in laser treatment for twin-twin transfusion syndrome

Citation for published version (APA):

Akkermans, J., van der Donk, L., Peeters, S. H. P., van Tuijl, S., Middeldorp, J. M., Lopriore, E., & Oepkes, D. (2017). Impact of laser power and firing angle on coagulation efficiency in laser treatment for twin-twin transfusion syndrome: an ex vivo placenta study. *Fetal Diagnosis and Therapy*, 42(3), 204-209. <https://doi.org/10.1159/000464323>

Document license:
CC BY-NC-ND

DOI:
[10.1159/000464323](https://doi.org/10.1159/000464323)

Document status and date:
Published: 01/10/2017

Document Version:
Publisher's PDF, also known as Version of Record (includes final page, issue and volume numbers)

Please check the document version of this publication:

- A submitted manuscript is the version of the article upon submission and before peer-review. There can be important differences between the submitted version and the official published version of record. People interested in the research are advised to contact the author for the final version of the publication, or visit the DOI to the publisher's website.
- The final author version and the galley proof are versions of the publication after peer review.
- The final published version features the final layout of the paper including the volume, issue and page numbers.

[Link to publication](#)

General rights

Copyright and moral rights for the publications made accessible in the public portal are retained by the authors and/or other copyright owners and it is a condition of accessing publications that users recognise and abide by the legal requirements associated with these rights.

- Users may download and print one copy of any publication from the public portal for the purpose of private study or research.
- You may not further distribute the material or use it for any profit-making activity or commercial gain
- You may freely distribute the URL identifying the publication in the public portal.

If the publication is distributed under the terms of Article 25fa of the Dutch Copyright Act, indicated by the "Taverne" license above, please follow below link for the End User Agreement:

www.tue.nl/taverne

Take down policy

If you believe that this document breaches copyright please contact us at:

openaccess@tue.nl

providing details and we will investigate your claim.

Impact of Laser Power and Firing Angle on Coagulation Efficiency in Laser Treatment for Twin-Twin Transfusion Syndrome: An ex vivo Placenta Study

Joost Akkermans^a Loes van der Donk^b Suzanne H.P. Peeters^a
Sjoerd van Tuijl^b Johanna M. Middeldorp^a Enrico Lopriore^c Dick Oepkes^a

^aDepartment of Obstetrics, Leiden University Medical Center, Leiden, ^bLifeTec Group, Eindhoven, and

^cDivision of Neonatology, Department of Pediatrics, Leiden University Medical Center, Leiden, The Netherlands

Keywords

Twin-twin transfusion syndrome · Laser therapy · Laser power · Laser energy · Placenta

Abstract

Objective: To assess the impact of laser power and firing angle on coagulation efficiency for closing placental anastomoses in the treatment of twin-twin transfusion syndrome.

Methods: We used an ex vivo blood-perfused human placenta model to compare time to complete coagulation using 30 vs. 50 W of neodymium-doped yttrium aluminum garnet laser power and using a firing angle of 90° vs. 45°. Placentas were perfused with pig blood at 5 mL/min. Differences were analyzed using independent-samples *t* test, Mann-Whitney U test, or χ^2 test as appropriate. **Results:** Coagulation took less time and energy using 50 W ($n = 53$) compared to 30 W ($n = 52$), 11 vs. 22 s ($p < 0.001$), and 557 vs. 659 J ($p = 0.007$). Perpendicular coagulation ($n = 53$) took less time and energy compared to a 45° angle ($n = 21$), 11 vs. 17 s ($p = 0.004$), and 557 vs. 871 J ($p = 0.004$). Bleeding complicated 2 (3%) measurements in the 50-W group, 5 (10%) in the 30-W group, and 3 (14%) in the 45° group. **Discussion:** In a highly

controlled model, a 50-W laser power setting was more energy efficient than 30 W in coagulating a placental vein. A more perpendicular laser firing angle resulted in more efficient coagulation. Furthermore, bleeding due to vessel wall disruption occurred more often with lower power and a more tangential approach.

© 2017 The Author(s)

Published by S. Karger AG, Basel

Introduction

Fetoscopic laser surgery is currently the best treatment modality for twin-twin transfusion syndrome (TTTS). De Lia et al. [1] first proposed fetoscopic laser surgery in 1990. In 2004, a randomized trial showed fetoscopic laser surgery to be superior to serial amnioreduction [2], and since then fetoscopic laser surgery has been widely adopted as the “first-choice” treatment for TTTS.

Different types of laser and power settings have been used for this procedure. Most centers now use either a neodymium-doped yttrium aluminum garnet (Nd:YAG) laser with a 1,064-nm wavelength or a diode laser with a 940-nm wavelength and a power setting between 20 and

80 W [3]. Both laser systems continuously emit laser energy with similar absorption properties. However, the optical penetration depth of the photons emitted by the diode laser is substantially lower than that of the Nd:YAG laser [4].

In 2014, Slaghekke et al. [5] showed that the Solomon technique, laser coagulation of the total vascular equator from one placenta margin to the other, was superior to the selective technique, where only visible anastomoses are coagulated, with respect to recurrence of TTTS and incidence of post-laser twin anemia-polycythemia sequence. With the Solomon technique, a larger surface area of the placenta is exposed to laser energy (time \times power) and, in total, more energy is used during a procedure.

The laser firing angle is believed to be of importance for successful efficient coagulation [6]. The more perpendicular the laser fiber is pointed at the vessel, the faster coagulation is achieved. This is one of the reasons why choosing the optimal introduction site for the fetoscope is found to be one of the most important steps in the procedure [7]. However, the actual impact of a tangential approach has never been evaluated.

We hypothesized that faster, more efficient laser coagulation of placental vascular anastomoses would increase the safety and improve the outcome of the treatment of TTTS. This study is a first step in proving this hypothesis, aiming to analyze the impact of laser power and firing angle on coagulation efficiency.

Methods

Study Design

This ex vivo experimental human placenta study was conducted at the Department of Fetal Therapy of the Leiden University Medical Center between March and July 2015. After informed consent, term placentas from women with uncomplicated vaginal deliveries were obtained. Placentas were rinsed and stored at room temperature in a 0.9% sodium chloride solution directly after delivery. All experiments took place within 8 h after delivery of the placenta.

Three groups of measurements were performed comparing laser power setting and laser firing angle. Group 1 consisted of measurements perpendicular to the vein with a power setting of 50 W. Group 2 consisted of measurements perpendicular to the vein with a 30-W power setting. Group 3 consisted of measurements performed at a 45° angle to the vein with a 50-W power setting. All placentas were randomly assigned to these groups.

Laser System

A Medilas Fibertom 5100 Nd:YAG laser (Dornier MedTech Europe GmbH, Weßling, Germany) with a 1,064-nm wavelength was used for all experiments. A 600- μ m bare-tip laser fiber was used which was replaced after every 25 measurements. The laser was serviced and calibrated before the study was started.

Tissue Preparation

All placentas were screened for eligible veins with a diameter of approximately 1.5–2.0 mm, relatively straight and without branches over a length of 2 cm. These vessels were dissected on both ends and cannulated with a 1.4-mm plastic cannula. The cannula was kept in place with a surgical stitch. The placenta samples were cast in 12-cm petri dishes filled with 2% agar solution (Sigma-Aldrich Chemie B.V., Zwijndrecht, The Netherlands) with the maternal side downward, a layer of agar preventing the placenta to touch the bottom of the petri dish. The adhesive character of the agar solution prevented leakage from minor defects of the basal plate. A high-definition photograph of each cannulated vessel was taken. All vessel diameters were measured using the ImageJ 1.47v software (ImageJ, National Institutes of Health, Bethesda, MD, USA).

Experimental Setup

A diagram of the experimental setup is given in Figure 1. The placenta samples were placed in a 0.9% sodium chloride bath and kept at a steady temperature of 37°C. The cannulated vein was connected to the circulation system that consisted of a calibrated syringe pump (Fresenius-Kabi Pilot C, Zeist, The Netherlands) with \pm 2% flow rate accuracy, connected to a P10EZ-1 pressure sensor (Becton Dickinson Medical, Franklin Lakes, NJ, USA) and a flow sensor (Transonic clamp-on 2 pxl flow sensor with a Transonic TS410 amplifier).

The laser fiber was kept in place by a system that allowed for easy and accurate adjustment, and was pointed either perpendicular or at a 45° angle at the vein. The distance between the laser fiber tip and the vein was kept at 4.0 mm for each experiment.

Fresh heparinized (5,000 IU/L) pig blood with a temperature of 37°C was used to circulate through the placental vein. The flow rate was set at 5 mL/min. The entire circulation was checked for leaks before each experiment.

A computer program continuously measured the flow and the pressure in the circulation and the mode of the laser system (on/off). The results of these measurements were plotted on a screen in real time. Measurements started when the laser was activated and continued until successful coagulation of the vein was achieved. Successful coagulation was defined by a drop of the flow speed below 2.5 mL/min without recovery. The noise on the flow sensor signal combined with the already low flow prevented us from using a flow of 0 mL/min to define stagnation of flow. Time was automatically measured between activation of the laser and stagnation of flow. Concurrently, the total energy used in each experiment was calculated based on the power setting.

Statistical Analysis

Comparisons were made between group 1 and group 2 as well as between group 1 and group 3 with respect to the time and energy used for successful coagulation defined as cessation of flow. Cases complicated by vessel wall disruption and bleeding were omitted from the analyses. Analyses were conducted using IBM SPSS Statistics for Windows, version 22.0, released 2013 (IBM Corp., Armonk, NY, USA). Normally distributed data were expressed as mean \pm standard deviation (SD) and compared using an independent-samples *t* test. Skewed data were expressed as median with range and were compared using a Mann-Whitney U test. For comparison of categorical data, a χ^2 test was used. A *p* value $<$ 0.05 was considered statistically significant.

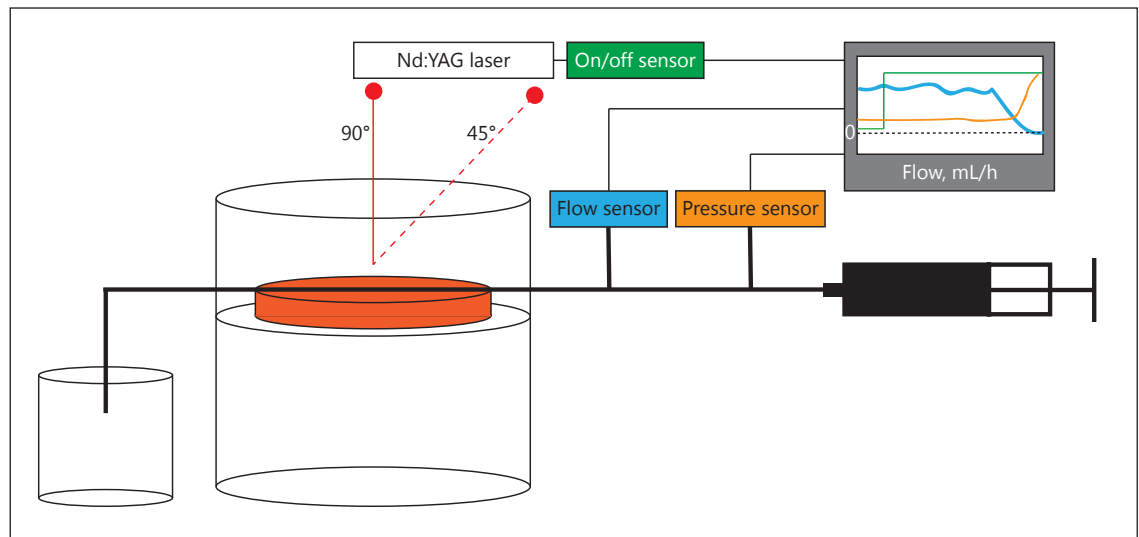


Fig. 1. Diagram of the experimental setup.

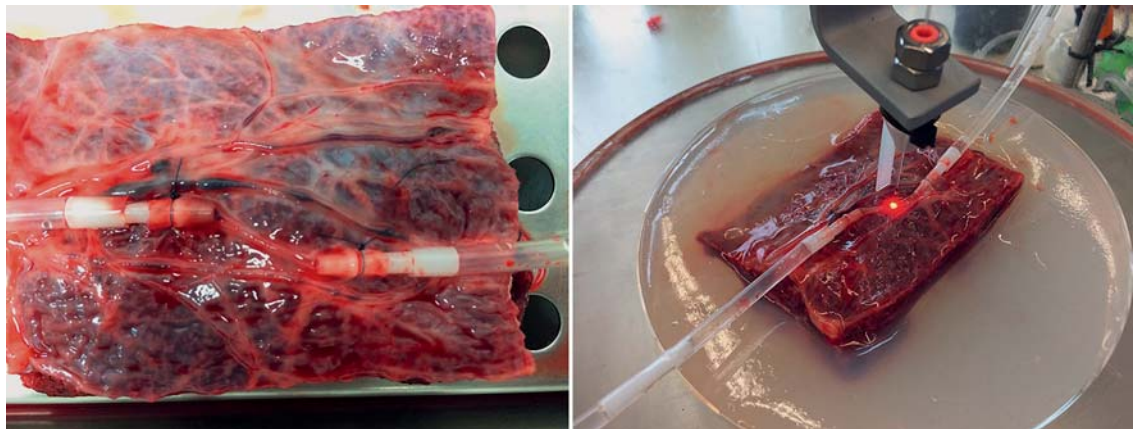


Fig. 2. Photograph of a sample before and during laser coagulation.

Results

Out of 37 fresh human placentas, a total of 126 viable samples were retrieved. Overall 126 measurements were conducted, and successful coagulation was achieved in 116 samples. All results and comparisons between groups are shown in Table 1. Figure 2 shows a sample before and during successful coagulation.

Group 1

In total, 53 measurements were performed perpendicular to the vein with a 50-W laser power setting. In 2 samples (4%), bleeding occurred during coagulation, and

in 1 of these successful coagulation was achieved. Fifty-one cases were eligible for analysis. The mean vessel diameter was 1.60 ± 0.14 mm and the median time needed for cessation of flow in the vein was 11.1 s (1.4–32.8), which led to a median energy used of 557 J (72–1,639).

Group 2

Fifty-two measurements were performed perpendicular to the vein at a power of 30 W. Five cases (10%) were complicated by bleeding, and in 2 cases successful coagulation could not be achieved. Forty-seven cases were analyzed. The mean vessel diameter in this group was 1.6 ± 0.12 mm and the median coagulation time was 22.0 s

Table 1. Analysis of laser duration and total energy for each group

	Group 1, 50 W 90° (n = 53)	Group 2, 30 W 90° (n = 52)	Group 3, 50 W 45° (n = 21)	p value 1 versus 2	p value 1 versus 3
Laser duration, s	11.13 (1.43–32.77)	21.98 (8.49–314.39)	17.42 (2.64–78.13)	<0.001*	0.004*
Laser energy used, J	556.50 (71.50–1,638.50)	659.40 (254.70–9,431.70)	871.25 (132.00–3,906.50)	0.007*	0.004*
Vein diameter, mm	1.61±0.14	1.63±0.12	1.65±0.12	0.347	0.223
Complications, bleeding	2 (3%)	5 (10%)	3 (14%)	0.116**	0.104**

Values are expressed as median (range), mean ± SD, or n (%). All cases where bleeding occurred were excluded from the analyses. *Mann-Whitney U test. ** χ^2 test.

(8.5–314.4). The median energy used for coagulation was 659 J (254–9,431).

Group 3

Using 50-W laser power at an angle of 45°, 21 measurements were performed. Three samples (14%) were complicated by vessel wall disruption, and in none of these successful coagulation could be accomplished. The mean vessel diameter was 1.65 ± 0.12 mm and the median time for coagulation was 17.4 s (2.6–78.1), leading to a median total energy used of 871 J (132–3,906).

Coagulation took significantly less time and energy using 50-W compared to 30-W laser (11.1 vs. 21.0 s, $p < 0.001$, and 556 vs. 659 J, $p = 0.007$). Perpendicular coagulation took significantly less time and energy compared to a 45° angle (11.1 vs. 17.4 s, $p = 0.004$, and 556 vs. 871 J, $p = 0.004$). The vessel diameter did not differ between the 50- and 30-W samples (1.6 vs. 1.6, $p = 0.347$) or between the 90° and 45° samples (1.6 vs. 1.6 mm, $p = 0.223$).

Discussion

This is the first study reporting on an ex vivo perfused human placenta model to evaluate laser coagulation efficiency of different power settings for obliterating superficial placental vessels. To date, despite more than 25 years of laser surgery for TTTS, the ideal power setting for coagulation of anastomosis is unknown. Different strategies are being used, e.g. lower power setting at early gestational age at treatment or power setting depending on the size of the anastomosis [3].

In this study, we found that a higher power setting was associated with more efficient coagulation, shown by a shorter coagulation time and less energy used. In addition, we found that the firing angle significantly impacts the coagulation efficiency. A 45° angle almost doubles the

amount of energy and time needed for successful coagulation compared to a perpendicular approach. With currently used equipment, optimization of the angle of approach can only be achieved by careful selection of the site of entry of the fetoscope. Innovations in instrument design may be needed to optimize the efficiency of laser coagulation in difficult cases with anterior placenta or sub-optimal position of the donor.

Bleeding due to vessel wall disruption, although rare, occurred slightly more often with lower power settings and with a more tangential laser angle. We hypothesize that a low power setting used for a longer period of time causes more endothelium damage [8], and without swift occlusion of the vessel by coagulated blood, this might increase the risk of vessel wall disruption and bleeding.

Recently, Zhao et al. [9] showed that, after a laser procedure, more chorioamnionitis and funisitis is seen compared to nonlasered monochorionic twin pregnancies. A possible explanation for this finding is the iatrogenic placental tissue necrosis caused by laser coagulation that may induce a maternal inflammatory response. In their study, a trend was seen towards more chorioamnionitis with higher energy use ($p = 0.06$). A previous study looked at the impact of laser coagulation on the ovine placenta with respect to local, collateral, and peripheral damage at different time points after treatment [10]. This study showed that the tissue effect, especially collateral and peripheral, increases over time. Superficial vessel coagulation induced complete functional elimination of the involved cotyledon caused either by direct tissue damage and/or by arrest of the cotyledonary flow, leading to ischemic necrosis. In this study, the impact of the amount of energy delivered and the relationship to tissue damage was not reported. A study evaluating different Nd:YAG power settings for the cutting and coagulation of pulmonary parenchyma with interstitial laser found that reducing the exposure time reduces local tissue coagulation

even when the laser power output is increased [11]. Combining our results with previous research suggests that efficiency in the use of laser energy for laser treatment of TTTS might be beneficial and that a higher power setting and a perpendicular approach are more energy efficient, and safer, in attaining successful coagulation.

Although the highly realistic *ex vivo* human placenta model we used eliminated many confounding factors, some limitations exist. The most important limitations of the model are the flow rate and the resistance of the circulation. It is difficult to accurately measure and control flow at flow rates <5 mL/min in a model. Not much is known about single anastomotic blood flow rates. Two studies reporting on anastomotic blood flow showed very different results, between 11.6 mL/min with intra-amniotic Doppler measurements [12] and 5.6 mL/24 h based on calculation of decreasing hemoglobin levels between intrauterine transfusion and birth [13]. The first one being highly unlikely due to the fact that the amount of flow exceeds the total blood volume of a midgestation fetus, currently no reliable technique exists to assess single anastomotic blood flow. The higher flow rate used in this model, compared to true TTTS anastomotic flow, leads to longer coagulation time due to the heat sink phenomenon, i.e. constant dissipation of laser energy caused by blood flow from the coagulation site.

Also, a higher flow rate may result in higher pressure buildup during coagulation, leading to a higher incidence of vessel wall disruption compared to *in vivo* coagulation of anastomoses in TTTS. Furthermore, the model uses pig blood instead of human blood, although this is similar to human blood with respect to size of red blood cells, red blood cell life span, and hemoglobin content and structure [14]. The consequence of these limitations is that time and energy results may not exactly correspond to reality. However, the use of the model ensures that all measurements are performed under constant conditions. We do not expect the limitations mentioned to have influenced the effect we showed.

Future studies using the model will focus on using diode laser and multiple power settings to identify the optimal power setting for different anastomosis types and sizes.

Conclusion

This study demonstrates that in a highly controlled though realistic environment, a 50-W laser power setting is more efficient in coagulating a placental vein with respect to time and total energy needed compared to a 30-W laser power setting. In addition, we showed that the firing angle of the laser has a great impact on coagulation efficiency. The more perpendicular the approach, the more efficient the coagulation achieved.

Acknowledgment

This research was supported by the Dutch Technology Foundation (STW), which is part of the Netherlands Organization for Scientific Research (NWO) and which is partly funded by the Ministry of Economic Affairs.

Statement of Ethics

The protocol of this study was screened by our local ethics committee and found not to fall under the scope of the Dutch WMO (Medical Research Involving Human Subjects Act), since placentas were obtained after informed consent and could not be traced back to the mother. For the experiments, fresh pig blood obtained from a licensed slaughterhouse was used. All experiments were conducted conformed with the institutional standards regarding human and animal tissue.

Disclosure Statement

None of the authors have any conflict of interest.

References

- 1 De Lia JE, Cruikshank DP, Keye WR Jr: Fetoscopic neodymium:YAG laser occlusion of placental vessels in severe twin-twin transfusion syndrome. *Obstet Gynecol* 1990;75:1046–1053.
- 2 Senat MV, Deprest J, Boulvain M, Paupe A, Winer N, Ville Y: Endoscopic laser surgery versus serial amnioreduction for severe twin-to-twin transfusion syndrome. *N Engl J Med* 2004;351:136–144.
- 3 Akkermans J, Peeters SH, Middeldorp JM, Klumper FJ, Lopriore E, Ryan G, Oepkes D: A worldwide survey of laser surgery for twin-twin transfusion syndrome. *Ultrasound Obstet Gynecol* 2015;45:168–174.
- 4 Berlien HP, Breuer H, Müller GJ, Krasner N, Okunata T, Sliney D: *Applied Laser Medicine*. Berlin/Heidelberg, Springer, 2003, pp 408–423.

- 5 Slaghekke F, Lopriore E, Lewi L, Middeldorp JM, van Zwet EW, Weingertner AS, Klumper FJ, DeKoninck P, Devlieger R, Kilby MD, Rustico MA, Deprest J, Favre R, Oepkes D: Fetoscopic laser coagulation of the vascular equator versus selective coagulation for twin-to-twin transfusion syndrome: an open-label randomised controlled trial. *Lancet* 2014;383:2144–2151.
- 6 Van Peborgh P, Rambaud C, Ville Y: Effect of laser coagulation on placental vessels: histological aspects. *Fetal Diagn Ther* 1997;12:32–35.
- 7 Peeters SH, Akkermans J, Westra M, Lopriore E, Middeldorp JM, Klumper FJ, Lewi L, Devlieger R, Deprest J, Kontopoulos EV, Quintero R, Chmait RH, Smoleniec JS, Otano L, Oepkes D: Identification of essential steps in laser procedure for twin-twin transfusion syndrome using the Delphi methodology: SILICONE study. *Ultrasound Obstet Gynecol* 2015;45:439–446.
- 8 Nizard J, Barbet JP, Ville Y: Does the source of laser energy influence the coagulation of chorionic plate vessels? Comparison of Nd:YAG and diode laser on an ex vivo placental model. *Fetal Diagn Ther* 2007;22:33–37.
- 9 Zhao D, Cohen D, Middeldorp JM, van Zwet EW, De Paepe ME, Oepkes D, Lopriore E: Histologic chorioamnionitis and funisitis after laser surgery for twin-twin transfusion syndrome. *Obstet Gynecol* 2016;128:304–312.
- 10 Branisteanu-Dumitrascu I, Deprest JA, Evrard VA, van Ballaer PP, van Schoubroeck D, Gratacos E, Pijnenborg R: Time-related cotyledonary effects of laser coagulation of superficial chorionic vessels in an ovine model. *Prenat Diagn* 1999;19:205–210.
- 11 Kirschbaum A, Palade E, Kayser G, Passlick B: Local effects of high-powered neodymium-doped yttrium aluminium garnet laser systems on the pulmonary parenchyma: an experimental study on the isolated perfused pig lung lobe. *Interact Cardiovasc Thorac Surg* 2012;15:191–193.
- 12 Nakata M, Martinez JM, Diaz C, Chmait R, Quintero RA: Intra-amniotic Doppler measurement of blood flow in placental vascular anastomoses in twin-twin transfusion syndrome. *Ultrasound Obstet Gynecol* 2004;24:102–103.
- 13 Lopriore E, van den Wijngaard JP, Middeldorp JM, Oepkes D, Walther FJ, van Gemert MJ, Vandenbussche FP: Assessment of fetofetal transfusion flow through placental arterio-venous anastomoses in a unique case of twin-to-twin transfusion syndrome. *Placenta* 2007;28:209–211.
- 14 Cooper DK, Hara H, Yazer M: Genetically engineered pigs as a source for clinical red blood cell transfusion. *Clin Lab Med* 2010;30:365–380.