

Physical activity patterns and clusters in 1001 patients with COPD

Citation for published version (APA):

Mesquita, R., Spina, G., Pitta, F., Donaire-Gonzalez, D., Deering, B. M., Patel, M. S., Mitchell, K. E., Alison, J., Van Gestel, A. J. R., Zogg, S., Gagnon, P., Abascal-Bolado, B., Vagaggini, B., Garcia-Aymerich, J., Jenkins, S. C., Romme, E. A. P. M., Kon, S. S. C., Albert, P. S., Waschki, B., ... Spruit, M. A. (2017). Physical activity patterns and clusters in 1001 patients with COPD. *Chronic Respiratory Disease*, 14(3), 256-269.
<https://doi.org/10.1177/1479972316687207>

DOI:

[10.1177/1479972316687207](https://doi.org/10.1177/1479972316687207)

Document status and date:

Published: 01/08/2017

Document Version:

Publisher's PDF, also known as Version of Record (includes final page, issue and volume numbers)

Please check the document version of this publication:

- A submitted manuscript is the version of the article upon submission and before peer-review. There can be important differences between the submitted version and the official published version of record. People interested in the research are advised to contact the author for the final version of the publication, or visit the DOI to the publisher's website.
- The final author version and the galley proof are versions of the publication after peer review.
- The final published version features the final layout of the paper including the volume, issue and page numbers.

[Link to publication](#)

General rights

Copyright and moral rights for the publications made accessible in the public portal are retained by the authors and/or other copyright owners and it is a condition of accessing publications that users recognise and abide by the legal requirements associated with these rights.

- Users may download and print one copy of any publication from the public portal for the purpose of private study or research.
- You may not further distribute the material or use it for any profit-making activity or commercial gain
- You may freely distribute the URL identifying the publication in the public portal.

If the publication is distributed under the terms of Article 25fa of the Dutch Copyright Act, indicated by the "Taverne" license above, please follow below link for the End User Agreement:

www.tue.nl/taverne

Take down policy

If you believe that this document breaches copyright please contact us at:

openaccess@tue.nl

providing details and we will investigate your claim.

Physical activity patterns and clusters in 1001 patients with COPD

Chronic Respiratory Disease
2017, Vol. 14(3) 256–269
© The Author(s) 2017
Reprints and permission:
sagepub.co.uk/journalsPermissions.nav
DOI: 10.1177/1479972316687207
journals.sagepub.com/home/crd



Rafael Mesquita^{1,2}, Gabriele Spina^{3,4}, Fabio Pitta⁵,
David Donaire-Gonzalez^{6,7}, Brenda M Deering⁸, Mehul S Patel⁹,
Katy E Mitchell¹⁰, Jennifer Alison^{11,12}, Arnoldus JR van Gestel^{13,†}, Stefanie Zogg¹⁴,
Philippe Gagnon¹⁵, Beatriz Abascal-Bolado^{16,17}, Barbara Vagaggini¹⁸,
Judith Garcia-Aymerich^{6,7,19}, Sue C Jenkins²⁰, Elisabeth APM Romme²¹,
Samantha SC Kon⁹, Paul S Albert²², Benjamin Waschki²³, Dinesh Shrikrishna^{9,24},
Sally J Singh¹⁰, Nicholas S Hopkinson⁹, David Miedinger¹⁴, Roberto P Benzo¹⁷,
François Maltais¹⁵, Pierluigi Paggiaro¹⁸, Zoe J McKeough¹¹, Michael I Polkey⁹,
Kylie Hill²⁰, William D-C Man⁹, Christian F Clarenbach¹³, Nidia A Hernandez⁵,
Daniela Savi²⁵, Sally Wootton¹¹, Karina C Furlanetto⁵, Li W Cindy Ng²⁰,
Anouk W Vaes^{1,26}, Christine Jenkins²⁷, Peter R Eastwood²⁸, Diana Jarreta²⁹,
Anne Kirsten²³, Dina Brooks³⁰, David R Hillman²⁸, Thaís Sant’Anna⁵,
Kenneth Meijer³¹, Selina Dürr¹⁴, Erica PA Rutten¹, Malcolm Kohler¹³,
Vanessa S Probst^{5,32}, Ruth Tal-Singer³³, Esther Garcia Gil²⁹,
Albertus C den Brinker⁴, Jörg D Leuppi¹⁴, Peter MA Calverley²²,
Frank WJM Smeenk²¹, Richard W Costello⁸, Marco Gramm²³, Roger Goldstein³⁰,
Miriam TJ Groenen¹, Helgo Magnussen²³, Emiel FM Wouters^{1,2},
Richard L ZuWallack³⁴, Oliver Amft^{3,35}, Henrik Watz²³ and Martijn A Spruit^{1,2,36}

¹ Department of Research & Education, CIRO, Horn, The Netherlands

² Department of Respiratory Medicine, Maastricht University Medical Center+ (MUMC+), Maastricht, The Netherlands

³ Department of Signal Processing Systems, Technische Universiteit Eindhoven, Eindhoven, The Netherlands

⁴ Smart Professional Spaces Group, Philips Research, Eindhoven, The Netherlands

⁵ Laboratory of Research in Respiratory Physiotherapy, Department of Physiotherapy, State University of Londrina (UEL), Londrina, Brazil

⁶ Centre for Research in Environmental Epidemiology (CREAL), Barcelona, Spain

⁷ CIBER Epidemiología y Salud Pública (CIBERESP), Barcelona, Spain

⁸ Department of Respiratory Medicine, Beaumont Hospital, Dublin, Ireland

⁹ NIHR Respiratory Biomedical Research Unit, Royal Brompton & Harefield NHS Foundation Trust and Imperial College, London, UK

¹⁰ NIHR EM CLAHRC – Centre for Exercise and Rehabilitation Science, University Hospitals, Leicester, UK

¹¹ Clinical and Rehabilitation Sciences, The University of Sydney, Sydney, NSW, Australia

¹² Physiotherapy Department, Royal Prince Alfred Hospital, Sydney, NSW, Australia

¹³ Pulmonary Division, University Hospital of Zurich, Zurich, Switzerland

¹⁴ Medical University Clinic, Cantonal Hospital Baselland, Liestal and Medical Faculty, University of Basel, Basel, Switzerland

¹⁵ Centre de recherche, Institut Universitaire de cardiologie et de pneumologie de Québec, 2725 Chemin Ste-Foy Québec, Université Laval, Québec, Canada

Corresponding author:

Rafael Mesquita, Department of Research & Education, CIRO, Hornerheide 1, 6085 NM, Horn, The Netherlands.

Email: rafaelmesquita14@gmail.com



Creative Commons CC BY-NC: This article is distributed under the terms of the Creative Commons Attribution-Non

Commercial 3.0 License (<http://www.creativecommons.org/licenses/by-nc/3.0/>) which permits non-commercial use, reproduction and distribution of the work without further permission provided the original work is attributed as specified on the SAGE and Open Access pages (<https://us.sagepub.com/en-us/nam/open-access-at-sage>).

Abstract

We described physical activity measures and hourly patterns in patients with chronic obstructive pulmonary disease (COPD) after stratification for generic and COPD-specific characteristics and, based on multiple physical activity measures, we identified clusters of patients. In total, 1001 patients with COPD (65% men; age, 67 years; forced expiratory volume in the first second [FEV₁], 49% predicted) were studied cross-sectionally. Demographics, anthropometrics, lung function and clinical data were assessed. Daily physical activity measures and hourly patterns were analysed based on data from a multisensor armband. Principal component analysis (PCA) and cluster analysis were applied to physical activity measures to identify clusters. Age, body mass index (BMI), dyspnoea grade and ADO index (including age, dyspnoea and airflow obstruction) were associated with physical activity measures and hourly patterns. Five clusters were identified based on three PCA components, which accounted for 60% of variance of the data. Importantly, *couch potatoes* (i.e. the most inactive cluster) were characterised by higher BMI, lower FEV₁, worse dyspnoea and higher ADO index compared to other clusters ($p < 0.05$ for all). Daily physical activity measures and hourly patterns are heterogeneous in COPD. Clusters of patients were identified solely based on physical activity data. These findings may be useful to develop interventions aiming to promote physical activity in COPD.

Keywords

Chronic obstructive pulmonary disease, physical activity, outcome assessment (healthcare), principal component analysis, cluster analysis

Date received: 17 February 2016; accepted: 15 October 2016

Introduction

Physical activity levels in patients with chronic obstructive pulmonary disease (COPD) are mostly presented as a total amount or as an average of multiple measurement days.^{1–6} Nevertheless, physical activity

is a multidimensional construct that should be described by relevant constructs and measures.⁷ A more detailed approach to physical activity data analysis could provide complementary information about the physical activity behaviour of patients with COPD.

¹⁶ Division of Pulmonary, Hospital U. Marqués de Valdecilla, IFIMAV, Santander, Spain

¹⁷ Mindful Breathing Laboratory, Mayo Clinic, Rochester, MN, USA

¹⁸ Cardio-Thoracic and Vascular Department, University of Pisa, Pisa, Italy

¹⁹ Universitat Pompeu Fabra (UPF), Barcelona, Spain

²⁰ School of Physiotherapy and Exercise Science, Curtin University, Perth, WA, Australia

²¹ Department of Respiratory Medicine, Catharina Hospital, Eindhoven, The Netherlands

²² School of Ageing and Chronic Disease, University Hospital Aintree, Liverpool, UK

²³ Pulmonary Research Institute at LungClinic Grosshansdorf, Airway Research Center North, Member of the German Centre for Lung Research, Grosshansdorf, Germany

²⁴ Musgrove Park Hospital, Taunton and Somerset NHS Foundation Trust, Somerset, UK

²⁵ Department of Pediatrics and Pediatric Neurology, Cystic Fibrosis Center, Sapienza University of Rome, Rome, Italy

²⁶ Environmental Risk and Health, Flemish Institute for Technological Research (VITO), Mol, Belgium

²⁷ Woolcock Institute of Medical Research, The University of Sydney, Camperdown, NSW, Australia

²⁸ Department of Pulmonary Physiology, Sir Charles Gairdner Hospital, Perth, WA, Australia

²⁹ AstraZeneca, Barcelona, Spain

³⁰ Respiratory Medicine, West Park Healthcare Centre and Faculty of Medicine, University of Toronto, Toronto, Canada

³¹ Department of Human Movement Science, Faculty of Health, Medicine and Life Sciences, Maastricht University, Maastricht, The Netherlands

³² Center for Research in Health Sciences, University North of Paraná (UNOPAR), Londrina, Brazil

³³ GlaxoSmithKline R&D, King of Prussia, PA, USA

³⁴ Department of Pulmonary and Critical Care, Saint Francis Hospital and Medical Center, Hartford, CT, USA

³⁵ ACTLab group, Chair of Sensor Technology, University Passau, Passau, Germany

³⁶ REVAL - Rehabilitation Research Center, BIOMED - Biomedical Research Institute, Faculty of Medicine and Life Sciences, Hasselt University, Diepenbeek, Belgium

† Deceased 3 June 2016

Studies in different patient populations show that a more detailed analysis of physical activity can be achieved by plotting physical activity hourly patterns^{7–9} and by applying cluster analysis to physical activity measures.^{8,10,11} Physical activity hourly patterns provide a graphic representation of the temporal trends of physical activity intensities over the course of a day^{7–9} and they can provide useful information. Rochester et al.,¹² for example, observed a delayed morning start and a reduced peak of activity in patients with Parkinson's disease. Cluster analysis,¹³ in turn, can be useful to identify subgroups of subjects with distinct physical activity characteristics. In middle-aged Chinese adults, Lee et al.⁸ were able to identify two clusters of subjects, one more active than the other. Male subjects in the least active cluster had higher body fat percentage and older age than those in the active group. These detailed analyses could then lead to new insights regarding subgroups of patients with COPD with specific physical activity patterns, which may be used in further investigations and intervention strategies.^{6,14–16} Indeed, for specific groups of patients, greater and/or more sustainable results may be achieved if the focus shifts from an increase in moderate-to-vigorous activities towards a reduction in sedentary time.^{17–20}

Therefore, the main contributions provided by this work are to describe physical activity measures and physical activity hourly patterns in patients with COPD after stratification for generic and COPD-specific characteristics and to identify clusters of patients with COPD based on physical activity measures.

Materials and methods

Detailed methods and supplementary results are available in the supplementary material.

Study design and participants

This is a pooled analysis of historical, cross-sectional and objectively assessed physical activity data from 10 countries (i.e. United Kingdom, Ireland, the Netherlands, Germany, Switzerland, Italy, Spain, the United States, Brazil and Australia). Published and/or unpublished physical activity data from previous studies as assessed by the SenseWear Armband or SenseWear Mini Armband activity monitors (both from BodyMedia Inc., Pittsburgh, PA, USA) were considered for analysis. A detailed description of the sources of the data included in the current analysis –

including study registration number, study type, main publications, sites of recruitment, period of data collection and number of subjects included – is provided in Supplementary e-Table 1. Ethics board approval was obtained from the local ethics committees/institutional review boards and written informed consent was provided by the participants. Subjects were included if they had COPD with a post-bronchodilator-forced expiratory volume in the first 1 second (FEV₁)/forced vital capacity ratio <0.70,²¹ clinical stability at the time of physical activity assessment and complete data for age, sex, body mass index (BMI) and daily physical activity measures.

Assessments

Demographics, anthropometrics, lung function and clinical data were assessed. In order to investigate their association with physical activity measures and hourly patterns, these outcomes were stratified according to the established criteria or according to the median value (i.e. above or below the median). The SenseWear Armband or SenseWear Mini Armband activity monitors, which use multisensory data in combination with pattern recognition algorithms to reliably estimate energy expenditure (EE) and metabolic equivalents of task (METs),²² were used to assess physical activity.^{23–26} SenseWear Professional software versions 6.1 and 7.0 were used for data analysis. METs data are divided into activity intensity levels using the thresholds proposed by the American College of Sports Medicine;²⁷ very light intensity, <2.0 METs; light intensity, 2.0 to 2.9 METs; and moderate-to-vigorous intensity, ≥3.0 METs.

Subjects with a minimum of four recorded days (two weekdays + Saturday + Sunday),¹ with the device being used for ≥22 h·day⁻¹,²⁸ were included in the analyses. Only recordings during waking hours of weekdays were considered for the main analysis, since physical activity measures during the weekend are known to be different.¹ The physical activity measures represent the average of all valid weekdays. Weekend days were used only for the presentation of daily physical activity hourly patterns. All values represent absolute values.

Cluster analysis

Cluster analysis was used to identify subgroups of patients with distinct physical activity profiles. First, minute-by-minute EE and METs data were stratified

according to different criteria (and the combination of them): intensity (e.g. very light, light or moderate-to-vigorous intensity), duration (e.g. bouts of activity; a bout was defined as a predefined minimum period of consecutive minutes (e.g. 10 min) in the same intensity), period of the day (e.g. before or after midday), frequency (e.g. number of bouts per day) and quantity (e.g. absolute numbers or percentage of total). These stratifications led to 180 distinct variables referred to as features (Supplementary e-Table 2). Data regarding steps-per-day were not included in the current analysis as this outcome is subject to inaccuracy unless the subject walks at higher speeds.²⁹ Second, principal component analysis (PCA) was used to compress the information contained in the high-dimensional feature set (180 dimensions) to a lower subspace (3 dimensions) that is both convenient for data visualisation and able to account for the desired variance of the data (set to 60%). The features were initially standardised using *z*-scores. All 180 features contributed to each principal component, but some contributed more than others. The most relevant features in each component are presented. Third, a *k*-means clustering algorithm with automatic selection of the number of clusters was applied to the three principal components to separate the subjects into groups with distinct characteristics. The algorithm selects the number of clusters in a way that the corresponding clustering results are the most stable under small perturbations of the input data set.¹³ The normalised mean over pairwise clustering distances was used as instability measure.¹³ Feature extraction, PCA and cluster analysis were performed using Matlab R2012b (Mathworks Inc., Natick, MA, USA).

Statistical analyses

Continuous variables were expressed as median (interquartile range), as most variables showed non-normal distribution. Categorical variables were expressed as absolute and/or relative frequency. Mann–Whitney *U* test or Kruskal–Wallis test (post hoc Dunn; significant if $p < 0.05$) was used for comparing continuous variables, while the χ^2 test was used for categorical variables. The influence of seasons on daily physical activity measures was minimal (Supplementary e-Table 3) and therefore this was not taken into consideration throughout the analyses. Spearman coefficient was used to investigate correlations, when appropriate. The area under each hourly pattern, named as the area under the curve (AUC),

was calculated and presented with its 95% confidence intervals to quantitatively represent time-varying averages of the hourly patterns. A *p* value of <0.01 was considered significant and all statistical analyses were performed using SPSS 17.0 (SPSS, Chicago, IL, USA) or GraphPad Prism 5 (GraphPad Software, La Jolla, CA, USA).

Results

General characteristics, physical activity measures and hourly patterns of 1001 patients with COPD

In total, 1001 patients with COPD were analysed (Table 1). The majority of patients were men, had a normal-to-overweight BMI, moderate-to-severe degree of airflow limitation and only a small proportion used long-term oxygen therapy (LTOT). Regarding the assessment of physical activity levels, the median number of valid days analysed per patient was 6 (6–6), resulting in a total of 6074 valid physical activity days, of which 4049 (67%) were weekdays. The daily total time was smallest and the daily total EE was lowest in moderate-to-vigorous intensity (Table 1). Higher EE was observed during summer for very light and light intensities, but this did not translate into more time in these intensities (Supplementary e-Table 3). Characteristics per country can be found in Supplementary e-Table 4.

Stratification for generic and COPD-specific characteristics

In general, patients of older age, female sex, LTOT users, lower diffusion capacity of the lung for carbon monoxide (D_{LCO}), higher modified Medical Research Council (mMRC) dyspnoea grade, higher BMI, higher ADO index (including age, dyspnoea, and airflow obstruction), higher Global Initiative for Chronic Obstructive Lung Disease (GOLD) grade and patients from GOLD group D spent the smallest daily total time and lowest daily total EE in moderate-to-vigorous intensity (Supplementary e-Tables 5–13). Daily physical activity hourly patterns after stratification for the abovementioned characteristics are presented in Figure 1 and Supplementary e-Figure 1, showing a significant influence of age, BMI, mMRC dyspnoea grades and ADO index scores, as there was little or no overlap between the 95% confidence intervals of the hourly patterns. The AUC values for these parameters varied between 0.25 and 0.36

Table 1. General characteristics and daily physical activity measures of patients with COPD ($n = 1001$).^a

Characteristic/physical activity measure	Value
General characteristics	
Age, years	67 (61–72)
Male, %	65
BMI, $\text{kg}\cdot\text{m}^{-2}$	25.8 (22.5–29.6)
BMI classification – Underweight/normal weight/preobese/obese, %	7/37/34/22
mMRC dyspnoea grade ^b	2 (1–3)
Long-term oxygen therapy, % ^c	10
FEV ₁ , L	1.31 (0.91–1.79)
FEV ₁ , % predicted	49 (34–64)
FEV ₁ /FVC, %	45 (35–56)
D _{LCO} , % predicted ^d	51 (37–67)
ADO index, points ^b	4 (3–5)
GOLD 2007 classification – 1/2/3/4, %	9/40/34/17
GOLD 2011 classification – A/B/C/D, % ^b	29/16/17/38
Physical activity measures in very light intensity	
Time, $\text{min}\cdot\text{day}^{-1}$	803 (710–901)
EE, METs $\cdot\text{min}\cdot\text{day}^{-1}$	1032 (822–1327)
Physical activity measures in light intensity	
Time, $\text{min}\cdot\text{day}^{-1}$	142 (92–194)
EE, METs $\cdot\text{min}\cdot\text{day}^{-1}$	435 (291–655)
Physical activity measures in moderate-to-vigorous intensity^e	
Time, $\text{min}\cdot\text{day}^{-1}$	52 (26–99)
EE, METs $\cdot\text{min}\cdot\text{day}^{-1}$	267 (132–550)
Time in ≥ 10 -minute bouts, $\text{min}\cdot\text{day}^{-1}$	6 (0–22)

COPD: chronic obstructive pulmonary disease; BMI: body mass index; mMRC: modified Medical Research Council; FEV₁: forced expiratory volume in the first second; FVC: forced vital capacity; D_{LCO}: diffusion capacity of the lung for carbon monoxide; ADO: age, dyspnoea and airflow obstruction index; GOLD: Global Initiative for Chronic Obstructive Lung Disease; EE: energy expenditure; MET: metabolic equivalent of task.

^aData expressed as relative frequency or median (interquartile range).

^bData available for 868 subjects.

^cData available for 707 subjects.

^dData available for 505 subjects.

^eTime in bouts of physical activity were averaged out over the total number of valid days.

(Supplementary e-Table 14). The influence of GOLD grades or GOLD groups on these patterns was small. Moreover, only weak associations existed between FEV₁ (% predicted) and the time in activities of very light, light and moderate-to-vigorous intensities (e-Figure 2).

Cluster analysis of daily physical activity measures

The PCA identified three components, which accounted for 60% of the total variance of the data (first component, 34%; second component, 17%; third component, 9%). The most relevant features of each component were: first component, daily time in ≥ 2 -min and ≥ 10 -min bouts of very light intensity; second component, total daily EE in moderate-to-vigorous intensity and daily EE in ≥ 2 -min and

≥ 10 -min bouts of moderate-to-vigorous intensity; third component, daily EE in very light intensity after midday, total daily EE in very light intensity and daily EE in ≥ 2 -min bouts of very light intensity after midday.

Cluster analysis performed on the three principal components identified five distinct clusters (Figure 2; see e-Video for a three-dimensional video of Figure 2). Table 2 presents the characteristics and physical activity measures of these groups, which were named based on the time spent on each physical activity intensity, as previously.³⁰ *Couch potatoes* ($n = 216$, 22%) were characterised by higher BMI, more dyspnoea, higher ADO index, more time in very light intensity and less time in light and moderate-to-vigorous intensities compared to other clusters. Similar to *couch potatoes*, *highly sedentary* ($n = 415$, 41%) spent more time in very light intensity and less

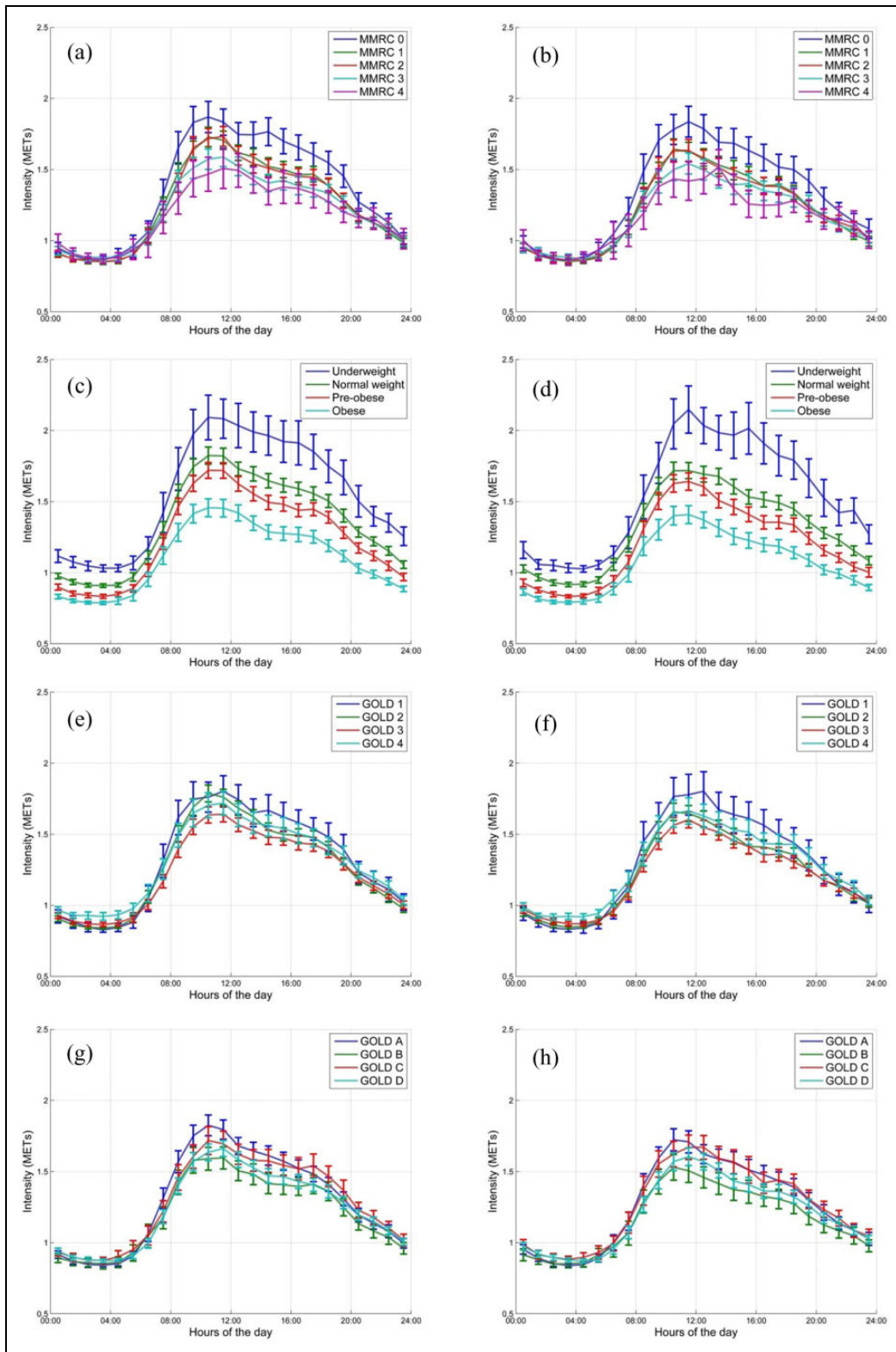


Figure I. Daily physical activity hourly patterns of the patients with chronic obstructive pulmonary disease after stratification for (a) and (b) – modified Medical Research Council (mMRC) grades, data available for 868 subjects only; (c) and (d) – body mass index (BMI) classification; (e) and (f) – Global Initiative for Chronic Obstructive Lung Disease (GOLD) grades (1 to 4); and (g) and (h) – GOLD groups (a to d). (a), (c), (e) and (g) represent weekdays, while (b), (d), (f) and (h) represent weekend days. Data pooled per hour as mean (95% confidence intervals).

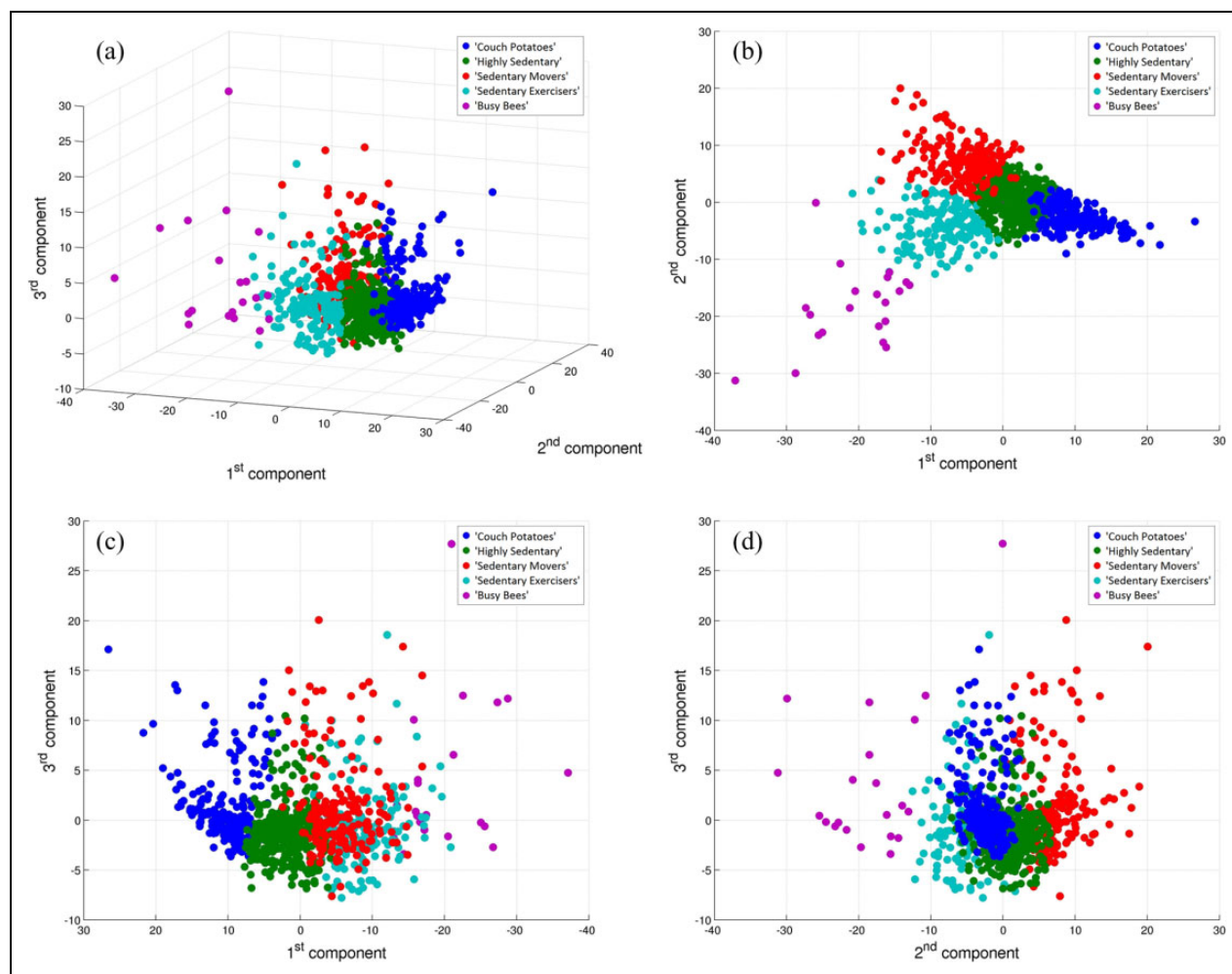


Figure 2. The five clusters identified. (a) Graph in three dimensions presenting the three principal component analysis (PCA) components; (b) graph in two dimensions presenting the first and second components; (c) graph in two dimensions presenting the first and third components; and (d) graph in two dimensions presenting the second and third components. Details about the relationship between components and clusters can be found in the supplementary material.

time in moderate-to-vigorous intensity than other clusters. *Sedentary movers* ($n = 184$, 18%) spent more time in light intensity and less time in moderate-to-vigorous intensity than *sedentary exercisers* ($n = 165$, 17%) and *busy bees* ($n = 21$, 2%), while *sedentary exercisers* in turn spent more time in light intensity compared to *busy bees*. *Busy bees* were characterised by less time in very light intensity and more time in moderate-to-vigorous intensity compared to other clusters. Figure 3 presents the daily time in activities of different intensities by the clusters, highlighting the mixed arrangements of physical activity. Figure 4 presents the daily physical activity hourly patterns of the clusters. In all clusters, the peak of intensity during the day occurred before midday, and in general weekdays and weekend days presented a similar pattern, especially in more inactive clusters. Hourly

patterns after synchronisation of the waking up moment are presented in Supplementary e-Figure 3. Moreover, increasing AUC values were found from *couch potatoes* to *busy bees* (Supplementary e-Table 14).

Discussion

The present study provides detailed analyses of objectively measured physical activity in a multinational sample of 1001 patients with COPD. The principal findings show that daily physical activity measures and hourly patterns vary considerably after stratification for generic and COPD-specific characteristics and that patients with COPD can be clustered based on daily physical activity measures, with five clusters being identified, each with distinct physical activity measures and hourly patterns.

Table 2. General characteristics and daily physical activity measures of clusters of patients with COPD.^a

Characteristic/physical activity measure	Cluster 1 (couch potatoes)	Cluster 2 (highly sedentary)	Cluster 3 (sedentary movers)	Cluster 4 (sedentary exercisers)	Cluster 5 (busy bees)	p-Value
General characteristics						
N	216	415	184	165	21	<0.0001
Age, yrs	68 (62–74)	67 (61–72)	67 (60–72)	63 (58–70) ^{b,c}	63 (56–68)	0.32
Male, %	67	67	51	76	67	<0.0001
BMI, kg·m ⁻²	30.4 (26.5–34.7)	25.7 (22.6–29.0) ^b	24.9 (22.2–27.4) ^b	23.1 (20.3–26.8) ^{b,c}	22.5 (18.3–30.9) ^b	<0.0001
FEV ₁ , % predicted	44 (32–58)	48 (34–61)	57 (41–71) ^{b,c}	50 (36–68) ^b	51 (39–70)	<0.0001
mMRC dyspnoea grade, points ^d	2 (1–3)	2 (1–3) ^b	1 (1–2) ^{b,c}	1 (0–3) ^b	1 (0–2) ^{b,c}	<0.0001
ADO index ^d	5 (3–6)	4 (3–5) ^b	4 (3–5) ^{b,c}	4 (3–5) ^b	3 (2–4) ^{b,c}	<0.0001
GOLD 2007 classification	4/34/43/19	8/38/35/19	18/46/23/13	9/42/31/18	10/43/33/14	0.17
GOLD 2011 classification	18/19/16/47	28/15/17/40	44/16/16/24	31/13/20/36	44/6/28/22	0.02
Season of assessment	21/20/23/36	24/16/27/33	22/20/26/32	24/13/30/33	19/24/24/33	0.85
Physical activity measures in very light intensity						
Time, min·day ⁻¹	955 (904–1042)	823 (768–879) ^b	706 (641–769) ^{b,c}	675 (604–735) ^{b,c}	516 (456–621) ^{b,c,e}	<0.0001
EE, METs·min·day ⁻¹	1356 (1165–1730)	1022 (854–1222) ^b	855 (729–1118) ^{b,c}	789 (692–1019) ^{b,c}	853 (661–1884) ^b	<0.0001
Physical activity measures in light intensity						
Time, min·day ⁻¹	57 (35–79)	139 (113–167) ^b	245 (208–282) ^{b,c}	167 (134–209) ^{b,c,e}	121 (87–163) ^{b,e,f}	<0.0001
EE, METs·min·day ⁻¹	196 (121–305)	408 (320–517) ^b	725 (591–958) ^{b,c}	526 (366–735) ^{b,c,e}	416 (227–1093) ^{b,e}	<0.0001
Physical activity measures in moderate-to-vigorous intensity						
Time, min·day ⁻¹	15 (7–27)	48 (30–70) ^b	68 (43–96) ^{b,c}	166 (136–219) ^{b,c,e}	361 (332–458) ^{b,c,e}	<0.0001
EE, METs·min·day ⁻¹	90 (40–192)	235 (138–349) ^b	327 (198–527) ^{b,c}	805 (616–1134) ^{b,c,e}	2693 (1694–5886) ^{b,c,e}	<0.0001
Time in ≥ 10-minute bouts, min·day ⁻¹	0 (0–3)	5 (0–14) ^b	9 (3–18) ^{b,c}	60 (38–91) ^{b,c,e}	209 (161–317) ^{b,c,e}	<0.0001

COPD: chronic obstructive pulmonary disease; BMI: body mass index; mMRC: modified Medical Research Council; ADO: age, dyspnoea and airflow obstruction index; GOLD: Global Initiative for Chronic Obstructive Lung Disease; EE: energy expenditure; MET: metabolic equivalent of task; FEV₁: forced expiratory volume in the first second.

^aData expressed as absolute/relative frequency, or median (interquartile range).

^bp < 0.05 vs. couch potatoes.

^cp < 0.05 vs. highly sedentary.

^dData available for 198 subjects in couch potatoes, 367 subjects in sedentary movers, 126 subjects in sedentary exercisers and 18 subjects in busy bees.

^ep < 0.05 vs. sedentary movers.

^fp < 0.05 vs. sedentary exercisers.

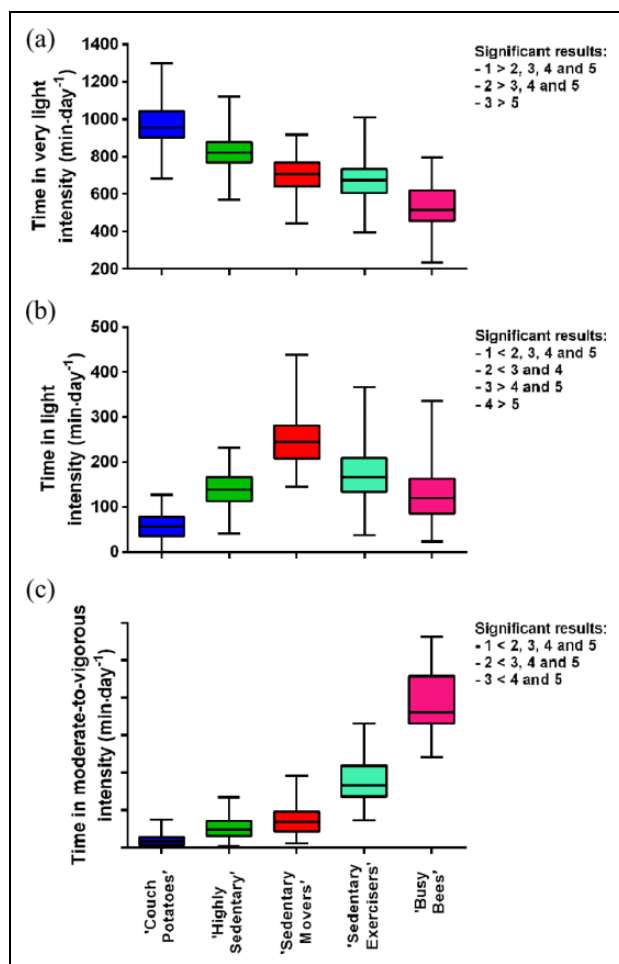


Figure 3. Daily time in activities of very light intensity (a), light intensity (b) and moderate-to-vigorous intensity (c) by clusters of patients with chronic obstructive pulmonary disease. Data are presented as median (interquartile range).

Daily physical activity measures and physical activity hourly patterns in COPD

Our results clearly show that physical activity is a heterogeneous characteristic in patients with COPD, corroborating previous findings.^{31,32} Distinct levels of physical activity were found after stratification for age (< or ≥ 67 years), sex (male or female), BMI (underweight to obese), mMRC dyspnoea grade (0 to 4), LTOT (yes or no), D_{LCO} (< or $\geq 51\%$ predicted), ADO index (< or ≥ 4 points), GOLD grades (1 to 4) and GOLD groups (A to D) (Supplementary e-Tables 5–13). Interestingly, comparable time in very light and moderate-to-vigorous intensities was found between GOLD groups A and C, and between GOLD groups B and D (e-Table 13). This suggests that symptoms of dyspnoea, which discriminates between groups A/C and B/D, are better associated with physical activity measures than the degree of airflow limitation, which discriminates between groups A/B and C/D. Demeyer et al.³³ also investigated physical activity levels in patients with COPD after classification into GOLD groups. Our findings are in broad agreement with theirs. When using the mMRC scale to classify patients into GOLD groups, as done in our study, these authors found similar number of steps per day between GOLD groups A and C, and between GOLD groups B and D.³³ In our study, despite the significant influence of GOLD groups on physical activity measures, only little or no influence could be observed on physical activity hourly patterns. Few studies have investigated hourly

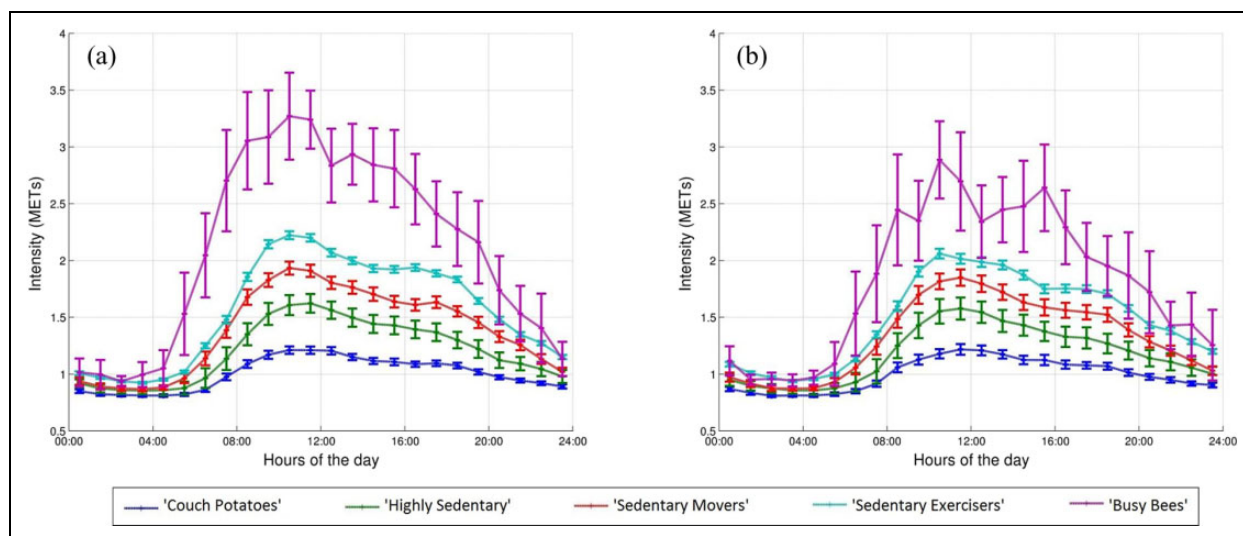


Figure 4. Daily physical activity hourly pattern of clusters of patients with chronic obstructive pulmonary disease during weekdays (a) and weekend days (b). Data pooled per hour as mean (95% confidence intervals).

patterns in COPD. In the study by Hecht et al.,⁹ the authors observed that the highest activity level occurred during the late morning and early afternoon hours, which is corroborated by our findings. Together with our findings, this suggests that hourly patterns have the potential to complement the information provided by summary values.

Clusters of patients with COPD based on daily physical activity measures

The present study is the first to apply cluster analysis using objectively assessed physical activity measures only to a large and diverse sample of patients with COPD. Indeed, five clusters were identified, each with distinct physical activity measures and hourly patterns. One very active cluster (*busy bees*) and one very inactive cluster (*couch potatoes*) were identified, but clusters in intermediate categories were also observed.

Only a few studies have used objectively measured physical activity data solely to cluster subjects. In 10- to-12-year-old children, De Bourdeaudhuij et al.³⁴ were able to identify a cluster with a mixed arrangement of physical activity (i.e. less time in moderate-to-vigorous intensity + less sedentary time). In our study, we also found a cluster with resembling characteristics (i.e. *sedentary exercisers*), confirming that activities of moderate-to-vigorous intensity and sedentary activities are not two sides of one continuum.³⁴ Based on the amount of time in moderate-to-vigorous physical activity, *sedentary exercisers* could be considered physically active.²⁷ Nonetheless, these patients spent over 11 h in very light intensity (i.e. sedentary behaviour), which can have negative health consequences as previous studies have shown the detrimental effects of prolonged periods of sedentary behaviour on health outcomes.^{35,36}

The characteristics of the clusters identified in our study can provide important insights on how to plan physical activity/exercise regimens for patients with COPD. For instance, *couch potatoes* were characterised by worse airflow limitation and more debilitating symptoms compared to other clusters. Previous studies have shown that some interventions might be particularly useful in patients with these characteristics. For example, interval training has been shown to result in lower symptom scores and fewer unintended breaks while reproducing the effects of endurance continuous training.³⁷ This type of training uses short bouts of high-intensity exercise interspersed

regularly with periods of rest or lower intensity exercise. Another modality that is particularly useful in more symptomatic patients is transcutaneous neuromuscular electrical stimulation,³⁸ but new modalities are emerging such as downhill walking.³⁹ Moreover, based on their characteristics *couch potatoes* may benefit the most from pulmonary rehabilitation.⁴⁰

Couch potatoes as well as *highly sedentary* were characterised by considerable amounts of time in very light physical activity (i.e., sedentary behaviour) and little time in moderate-to-vigorous physical activity. These clusters would probably benefit from an intervention focusing not only on increasing the time in moderate-to-vigorous physical activity but also on reducing the time in sedentary behaviour. Potential ways to increase physical activity in COPD have been explored in a recent systematic review.¹⁶ Although some intervention characteristics seemed to associate with greater improvements, such as interventions focusing specifically on increasing physical activity and longer pulmonary rehabilitation programmes,¹⁶ to date there is little evidence that relevant and sustainable changes in physical activity are achievable in patients with COPD, especially physical activity in moderate-to-vigorous intensity.²⁰ Some patients might find it difficult to increase the time in moderate-to-vigorous physical activity, which suggests that it might be more realistic for these patients to increase the time in light activities.^{17,19} In fact, there is emerging literature in other populations suggesting that health benefits can be achieved by decreasing time in sedentary behaviour and increasing the participation in light intensity physical activities.⁴¹⁻⁴³ In patients with COPD, low-intensity exercises were able to improve health-related quality of life and functional status.⁴⁴ Moreover, a recent study demonstrated that greater quantity of low-intensity physical activity associates with a reduced risk of COPD hospitalisation.¹⁸

Sedentary movers and *sedentary exercisers* spent a considerable amount of time in moderate-to-vigorous intensity (i.e. 68 and 166 min, respectively), which is in agreement with the recommended by physical activity guidelines.²⁷ Nonetheless, these patients also spent important amounts of time in very light intensity (i.e. 706 and 675 min, respectively). Indeed, the daily amount of time spent in very light intensity (i.e. sedentary behaviour) by these groups is more than what other studies have considered as harmful (i.e. 7 h).^{35,36} Sedentary behaviour has been the focus of recent literature in COPD.^{20,45} Sedentary behaviour is

defined as any waking behaviour characterised by an $EE \leq 1.5$ METs while in a sitting or reclining posture (e.g. watching television).⁴⁶ Epidemiological data in non-COPD populations have shown that engaging in moderate-to-vigorous intensity physical activity is not enough to fully protect against the detrimental consequences of prolonged periods of sedentary behaviour.^{47,48} This suggests that researchers and clinicians should also aim to reduce sedentary behaviour. Interventions focusing on sedentary behaviour in patients with COPD are scarce. Nevertheless, studies on other populations have shown promising results. In the 'Stand Up For Your Health' study,⁴⁹ a brief intervention based on goal setting and behavioural self-monitoring was shown to be feasible and able to reduce sedentary time and increase physical activity in Australian older adults. In the 'TView' study,⁵⁰ a 3-week programme using an electronic television lock-out system led to reductions in TV viewing time (a sedentary behaviour) of almost 3 h per day in overweight and obese adults. Strategies based on the use of technology might also provide beneficial results, such as pads to measure sitting time.⁵¹

Busy bees were characterised by very high levels of moderate-to-vigorous physical activity. Not surprisingly, this group was formed by a very small number of patients (i.e. 21 patients, 2% of the whole sample). *Busy bees* would probably benefit from strategies to maintain their very high physical activity levels. Home-based exercise training combined with monthly phone calls was able to maintain the gains in exercise capacity and health-related quality of life after a short pulmonary rehabilitation programme in patients with moderate COPD.⁵² Strategies that can be easily incorporated into daily life, such as leisure walking, can produce more sustainable results. A randomised controlled trial including a 3-month programme of outdoor Nordic walking in patients with COPD resulted in significant improvements in exercise capacity and physical activity.⁵³ These improvements were sustained at 6 and 9 months after the initial intervention.⁵³

Strengths and methodological considerations

We have analysed a large and diverse sample of patients with COPD with objectively assessed physical activity data. This allowed detailed analyses of daily physical activity, even identifying clusters of patients with COPD with distinct physical activity measures, a novelty within the COPD literature. Physical activity hourly patterns were also investigated for

the first time in a large-scale study in COPD, representing another important advance. All these analyses were only possible due to the use of objective methods to assess physical activity.

Some methodological considerations need to be taken into account. First, selection and information biases might be present, as the data were collected separately as part of different studies. Second, the clusters identified in our study were not validated as we were not able to show whether they relate to relevant clinical outcomes, such as COPD-related hospitalisations and deaths due to the lack of follow-up assessments, or whether they could be replicated in another sample. Third, other characteristics that may influence physical activity levels in patients with COPD, such as comorbidities,⁵⁴ were not available.

To conclude, daily physical activity measures and hourly patterns in patients with COPD were found to vary considerably depending on the clinical characteristic. Moreover, five clusters of patients were identified, each with distinct physical activity measures and hourly patterns. The present data show that outcome measures need to be clearly delineated when evaluating interventions aiming to promote physical activity in patients with COPD.

Acknowledgement

The Australian-based authors would like to thank the Pulmonary Rehabilitation Departments at Royal Prince Alfred Hospital (particularly Lissa Spencer), Concord Repatriation General Hospital, Prince of Wales Hospital (particularly Renae McNamara), Manly Hospital, Hornsby-Kuring-Gai Hospital, Sir Charles Gairdner Hospital (particularly Nola Cecins and Michelle Melang) and Bentley Hospital for assisting with participant recruitment.

Author contribution

RM and GS have contributed equally to this work. OA, HW and MAS are joint senior authors.

Declaration of conflicting interests

The author(s) declared no potential conflicts of interest with respect to the research, authorship, and/or publication of this article.

Funding

The author(s) disclosed receipt of the following financial support for the research, authorship, and/or publication of this article: RM is supported by the National Council of Scientific and Technological Development (CNPq), Brazil (246704/2012-8). DB holds a Canada Research Chair,

Canada. SSKC was funded by the Medical Research Council, UK. WD-CM was funded by the Medical Research Council, UK, and the National Institute for Health Research, UK. MSP was supported by an unrestricted research grant from Astra Zeneca. KCF is supported by the Coordination for the Improvement of Higher Education Personnel (CAPES), Brazil. SZ, DM, SD and JDL were supported by the following foundations: ‘Gottfried und Julia Bangerter-Rhyner-Stiftung’, ‘Freiwillige Akademische Gesellschaft Basel’ and ‘Forschungsfonds der Universität Basel’, Switzerland. DS was supported by GSK and by the Medical Research Council, UK (G0701628). FP is supported by CNPq, Brazil. PRE was supported by an NHMRC Research Fellowship, Australia (1042341). MIP’s contribution to this manuscript was funded by the NIHR Respiratory Biomedical Research Unit at the Royal Brompton and Harefield NHS Foundation Trust and Imperial College, UK. EFMW was supported by Point-One funding from AgentschapNL, Dutch Ministry of Economic affairs, the Netherlands. AWW was supported by ‘Stichting de Weijerhorst’ and Point-One funding from AgentschapNL, Dutch Ministry of Economic affairs, Netherlands. MAS was supported by Point-One funding from AgentschapNL, Dutch Ministry of Economic affairs, the Netherlands. Part of the data was sponsored by GlaxoSmithKline (data from the ECLIPSE cohort sub-study). Data from Ireland was supported by Beaumont Foundation, Ireland and SwordMedical Ltd, Ireland. The Australian sites were supported by a National Health and Medical Research Grant, Australia (grant no.: 570814). Part of the data collection in the UK (data from Leicester) was supported by the National Institute for Health Research (NIHR) Leicestershire, Northamptonshire and Rutland Collaboration for Leadership in Applied Health Research and Care and took place at University Hospitals of Leicester NHS Trust, UK, and by the NIHR Leicester Respiratory Biomedical Research Unit, UK. Data from the PAC-COPD study was funded by grants from the following Spanish institutions: Fondo de Investigación Sanitaria, Ministry of Health (FIS PI020541); Agència d’Avaluació de Tecnologia i Recerca Mèdiques, Catalonia Government (AATRM 035/20/02); Spanish Society of Pneumology and Thoracic Surgery (SEPAR 2002/137); Catalan Foundation of Pneumology (FUCAP 2003 Beca Marià Ravà); Red RESPIRA (RTIC C03/11); Red RCESP (RTIC C03/09), Fondo de Investigación Sanitaria (PI052486); Fondo de Investigación Sanitaria (PI052302); Fundació La Marató de TV3 (No. 041110); and DURSI (2005SGR00392); and by unrestricted educational grants from Novartis Farmacèutica and AstraZeneca Farmacèutica.

Supplemental material

Supplementary material is available for this article online.

References

1. Watz H, Waschki B, Meyer T, et al. Physical activity in patients with COPD. *Eur Respir J* 2009; 33: 262–272.
2. Pitta F, Takaki MY, Oliveira NH, et al. Relationship between pulmonary function and physical activity in daily life in patients with COPD. *Respir Med* 2008; 102: 1203–1207.
3. Hill K, Dolmage TE, Woon L, et al. Defining the relationship between average daily energy expenditure and field-based walking tests and aerobic reserve in COPD. *Chest* 2012; 141: 406–412.
4. Depew ZS, Karpman C, Novotny PJ, et al. Correlations between gait speed, 6-minute walk distance, physical activity, and self-efficacy in patients with severe chronic lung disease. *Respir Care* 2013; 58: 2113–2119.
5. Deering BM, Fullen B, Egan C, et al. Acupuncture as an adjunct to pulmonary rehabilitation. *J Cardiopulm Rehabil Prev* 2011; 31: 392–399.
6. Egan C, Deering BM, Blake C, et al. Short term and long term effects of pulmonary rehabilitation on physical activity in COPD. *Respir Med* 2012; 106: 1671–1679.
7. Bussmann JB and van den Berg-Emons RJ. To total amount of activity . . . and beyond: perspectives on measuring physical behavior. *Front Psychol* 2013; 4: 463.
8. Lee PH, Yu YY, McDowell I, et al. A cluster analysis of patterns of objectively measured physical activity in Hong Kong. *Public Health Nutr* 2013; 16: 1436–1444.
9. Hecht A, Ma S, Porszasz J, et al. Methodology for using long-term accelerometry monitoring to describe daily activity patterns in COPD. *COPD* 2009; 6: 121–129.
10. Trilk JL, Pate RR, Pfeiffer KA, et al. A cluster analysis of physical activity and sedentary behavior patterns in middle school girls. *J Adolesc Health* 2012; 51: 292–298.
11. Gubbels JS, Kremers SP, Stafleu A, et al. Clustering of energy balance-related behaviors in 5-year-old children: lifestyle patterns and their longitudinal association with weight status development in early childhood. *Int J Behav Nutr Phys Act* 2012; 9: 77.
12. Rochester L, Jones D, Hetherington V, et al. Gait and gait-related activities and fatigue in Parkinson’s disease: what is the relationship? *Disabil Rehabil* 2006; 28: 1365–1371.
13. von Luxburg U. Clustering stability: an overview. *Foundations and trends in machine learning* 2010; 2: 235–274.

14. Cindy Ng LW, Mackney J, Jenkins S, et al. Does exercise training change physical activity in people with COPD? A systematic review and meta-analysis. *Chron Respir Dis* 2012; 9: 17–26.
15. Vaes AW, Cheung A, Atakhorrami M, et al. Effect of ‘activity monitor-based’ counseling on physical activity and health-related outcomes in patients with chronic diseases: a systematic review and meta-analysis. *Ann Med* 2013; 45: 397–412.
16. Mantoani LC, Rubio N, McKinstry B, et al. Interventions to modify physical activity in patients with COPD: a systematic review. *Eur Respir J* 2016; 48: 69–81.
17. Sparling PB, Howard BJ, Dunstan DW, et al. Recommendations for physical activity in older adults. *BMJ* 2015; 350: h100.
18. Donaire-Gonzalez D, Gimeno-Santos E, Balcells E, et al. Benefits of physical activity on COPD hospitalisation depend on intensity. *Eur Respir J* 2015; 46: 1281–1289.
19. Spruit MA, Pitta F, McAuley E, et al. Pulmonary rehabilitation and physical activity in patients with chronic obstructive pulmonary disease. *Am J Respir Crit Care Med* 2015; 192: 924–933.
20. Cavalheri V, Straker L, Gucciardi DF, et al. Changing physical activity and sedentary behaviour in people with COPD. *Respirology* 2016; 21: 419–426.
21. Vestbo J, Hurd SS, Agusti AG, et al. Global strategy for the diagnosis, management, and prevention of chronic obstructive pulmonary disease: GOLD executive summary. *Am J Respir Crit Care Med* 2013; 187: 347–365.
22. Jette M, Sidney K and Blumchen G. Metabolic equivalents (METs) in exercise testing, exercise prescription, and evaluation of functional capacity. *Clin Cardiol* 1990; 13: 555–565.
23. Colbert LH, Matthews CE, Havighurst TC, et al. Comparative validity of physical activity measures in older adults. *Med Sci Sports Exerc* 2011; 43: 867–876.
24. Mackey DC, Manini TM, Schoeller DA, et al. Validation of an armband to measure daily energy expenditure in older adults. *J Gerontol A Biol Sci Med Sci* 2011; 66: 1108–1113.
25. Hill K, Dolmage TE, Woon L, et al. Measurement properties of the SenseWear armband in adults with chronic obstructive pulmonary disease. *Thorax* 2010; 65: 486–491.
26. Cavalheri V, Donaria L, Ferreira T, et al. Energy expenditure during daily activities as measured by two motion sensors in patients with COPD. *Respir Med* 2011; 105: 922–929.
27. Garber CE, Blissmer B, Deschenes MR, et al. American College of Sports Medicine position stand. Quantity and quality of exercise for developing and maintaining cardiorespiratory, musculoskeletal, and neuromotor fitness in apparently healthy adults: guidance for prescribing exercise. *Med Sci Sports Exerc* 2011; 43: 1334–1359.
28. Waschki B, Spruit MA, Watz H, et al. Physical activity monitoring in COPD: compliance and associations with clinical characteristics in a multicenter study. *Respir Med* 2012; 106: 522–530.
29. Furlanetto KC, Bisca GW, Oldenberg N, et al. Step counting and energy expenditure estimation in patients with chronic obstructive pulmonary disease and healthy elderly: accuracy of 2 motion sensors. *Arch Phys Med Rehabil* 2010; 91: 261–267.
30. Bakrania K, Edwardson CL, Bodicoat DH, et al. Associations of mutually exclusive categories of physical activity and sedentary time with markers of cardiometabolic health in English adults: a cross-sectional analysis of the Health Survey for England. *BMC Public Health* 2016; 16: 25.
31. Garcia-Aymerich J, Serra I, Gomez FP, et al. Physical activity and clinical and functional status in COPD. *Chest* 2009; 136: 62–70.
32. Gimeno-Santos E, Frei A, Steurer-Stey C, et al. Determinants and outcomes of physical activity in patients with COPD: a systematic review. *Thorax* 2014; 69: 731–739.
33. Demeyer H, Gimeno-Santos E, Rabinovich RA, et al. Physical activity characteristics across GOLD quadrants depend on the questionnaire used. *PLoS One* 2016; 11: e0151255.
34. De Bourdeaudhuij I, Verloigne M, Maes L, et al. Associations of physical activity and sedentary time with weight and weight status among 10- to 12-year-old boys and girls in Europe: a cluster analysis within the ENERGY project. *Pediatr Obes* 2013; 8: 367–375.
35. Centers for Disease Control and Prevention. *National health and nutrition examination survey data*. CDC, 2011. www.cdc.gov/nchs/nhanes.htm (accessed 23 August 2015).
36. Chau JY, Grunseit AC, Chey T, et al. Daily sitting time and all-cause mortality: a meta-analysis. *PLoS One* 2013; 8: e80000.
37. Vogiatzis I, Nanas S and Roussos C. Interval training as an alternative modality to continuous exercise in patients with COPD. *Eur Respir J* 2002; 20: 12–19.
38. Sillen MJ, Franssen FM, Delbressine JM, et al. Efficacy of lower-limb muscle training modalities in severely dyspnoeic individuals with COPD and

- quadriceps muscle weakness: results from the DICES trial. *Thorax* 2014; 69: 525–531.
39. Camillo CA, Burtin C, Hornikx M, et al. Physiological responses during downhill walking: A new exercise modality for subjects with chronic obstructive pulmonary disease? *Chron Respir Dis* 2015; 12: 155–164.
 40. Spruit MA, Augustin IM, Vanfleteren LE, et al. Differential response to pulmonary rehabilitation in COPD: multidimensional profiling. *Eur Respir J* 2015; 46: 1625–1635.
 41. Pau M, Leban B, Collu G, et al. Effect of light and vigorous physical activity on balance and gait of older adults. *Arch Gerontol Geriatr* 2014; 59: 568–573.
 42. Loprinzi PD, Lee H and Cardinal BJ. Daily movement patterns and biological markers among adults in the United States. *Prev Med* 2014; 60: 128–130.
 43. Duvivier BM, Schaper NC, Bremers MA, et al. Minimal intensity physical activity (standing and walking) of longer duration improves insulin action and plasma lipids more than shorter periods of moderate to vigorous exercise (cycling) in sedentary subjects when energy expenditure is comparable. *PLoS One* 2013; 8: e55542.
 44. Probst VS, Kovelis D, Hernandez NA, et al. Effects of 2 exercise training programs on physical activity in daily life in patients with COPD. *Respir Care* 2011; 56: 1799–1807.
 45. Hill K, Gardiner PA, Cavalheri V, et al. Physical activity and sedentary behaviour: applying lessons to chronic obstructive pulmonary disease. *Intern Med J* 2015; 45: 474–482.
 46. Sedentary Behaviour Research N. Letter to the editor: standardised use of the terms “sedentary” and “sedentary behaviours”. *Appl Physiol Nutr Metab* 2012; 37: 540–542.
 47. Healy GN, Dunstan DW, Salmon J, et al. Television time and continuous metabolic risk in physically active adults. *Med Sci Sports Exerc* 2008; 40: 639–645.
 48. Healy GN, Matthews CE, Dunstan DW, et al. Sedentary time and cardio-metabolic biomarkers in US adults: NHANES 2003–06. *Eur Heart J* 2011; 32: 590–597.
 49. Gardiner PA, Eakin EG, Healy GN, et al. Feasibility of reducing older adults’ sedentary time. *Am J Prev Med* 2011; 41: 174–177.
 50. Otten JJ, Jones KE, Littenberg B, et al. Effects of television viewing reduction on energy intake and expenditure in overweight and obese adults: a randomised controlled trial. *Arch Intern Med* 2009; 169: 2109–2115.
 51. Ryde GC, Gilson ND, Suppini A, et al. Validation of a novel, objective measure of occupational sitting. *J Occup Health* 2012; 54: 383–386.
 52. du Moulin M, Taube K, Wegscheider K, et al. Home-based exercise training as maintenance after outpatient pulmonary rehabilitation. *Respiration* 2009; 77: 139–145.
 53. Breyer MK, Breyer-Kohansal R, Funk GC, et al. Nordic walking improves daily physical activities in COPD: a randomised controlled trial. *Respir Res* 2010; 11: 112.
 54. Watz H, Waschki B, Kirsten A, et al. The metabolic syndrome in patients with chronic bronchitis and COPD: frequency and associated consequences for systemic inflammation and physical inactivity. *Chest* 2009; 136: 1039–1046.