

Sub-arcsecond imaging with the International LOFAR Telescope

Citation for published version (APA):

Jackson, N., Badole, S., Morgan, J., Chhetri, R., Prūsis, K., Nikolajevs, A., Morabito, L., Brentjens, M., Sweijen, F., Iacobelli, M., Orrù, E., Sluman, J., Blaauw, R., Mulder, H., van Dijk, P., Mooney, S., Deller, A., Moldon, J., Callingham, J. R., ... Zucca, P. (2022). Sub-arcsecond imaging with the International LOFAR Telescope: II. Completion of the LOFAR Long-Baseline Calibrator Survey. *Astronomy and Astrophysics*, 658, Article A2. <https://doi.org/10.1051/0004-6361/202140756>

Document license:
CC BY

DOI:
[10.1051/0004-6361/202140756](https://doi.org/10.1051/0004-6361/202140756)

Document status and date:
Published: 01/02/2022

Document Version:
Publisher's PDF, also known as Version of Record (includes final page, issue and volume numbers)

Please check the document version of this publication:

- A submitted manuscript is the version of the article upon submission and before peer-review. There can be important differences between the submitted version and the official published version of record. People interested in the research are advised to contact the author for the final version of the publication, or visit the DOI to the publisher's website.
- The final author version and the galley proof are versions of the publication after peer review.
- The final published version features the final layout of the paper including the volume, issue and page numbers.

[Link to publication](#)

General rights

Copyright and moral rights for the publications made accessible in the public portal are retained by the authors and/or other copyright owners and it is a condition of accessing publications that users recognise and abide by the legal requirements associated with these rights.

- Users may download and print one copy of any publication from the public portal for the purpose of private study or research.
- You may not further distribute the material or use it for any profit-making activity or commercial gain
- You may freely distribute the URL identifying the publication in the public portal.

If the publication is distributed under the terms of Article 25fa of the Dutch Copyright Act, indicated by the "Taverne" license above, please follow below link for the End User Agreement:

www.tue.nl/taverne

Take down policy

If you believe that this document breaches copyright please contact us at:

openaccess@tue.nl

providing details and we will investigate your claim.

Sub-arcsecond imaging with the International LOFAR Telescope

II. Completion of the LOFAR Long-Baseline Calibrator Survey[★]

N. Jackson¹, S. Badole¹, J. Morgan², R. Chhetri², K. Prüsis³, A. Nikolajevs³, L. Morabito⁴, M. Brentjens⁵, F. Sweijen⁶, M. Iacobelli⁵, E. Orrù⁵, J. Sluman⁵, R. Blaauw⁵, H. Mulder⁵, P. van Dijk⁵, S. Mooney⁷, A. Deller⁸, J. Moldon⁹, J. R. Callingham^{6,5}, J. Harwood¹⁰, M. Hardcastle¹⁰, G. Heald¹¹, A. Drabent¹², J. P. McKean^{5,13}, A. Asgekar^{5,14}, I. M. Avruch^{5,15}, M. J. Bentum^{5,16}, A. Bonafede^{17,18,19,20}, W. N. Brouw¹³, M. Brügger²⁰, H. R. Butcher²¹, B. Ciardi²², A. Coolen⁵, A. Corstanje^{23,24}, S. Damstra⁵, S. Duscha⁵, J. Eislöffel¹², H. Falcke²⁴, M. Garrett¹, F. de Gasperin^{25,26}, J.-M. Griessmeier^{27,28}, A. W. Gunst⁵, M. P. van Haarlem⁵, M. Hoeft¹², A. J. van der Horst^{29,30}, E. Jütte³¹, L. V. E. Koopmans¹³, A. Krankowski³², P. Maat⁵, G. Mann³³, G. K. Miley⁶, A. Nelles^{34,35}, M. Norden⁵, M. Paas³⁶, V. N. Pandey⁵, M. Pandey-Pommier³⁷, R. F. Pizzo⁵, W. Reich³⁸, H. Rothkaehl³⁹, A. Rowlinson^{5,40}, M. Ruiter⁵, A. Shulevski^{6,40}, D. J. Schwarz⁴¹, O. Smirnov^{42,43}, M. Tagger²⁷, C. Vocks³³, R. J. van Weeren⁶, R. Wijers⁴⁰, O. Wucknitz³⁸, P. Zarka^{44,28}, J. A. Zensus³⁸, and P. Zucca⁵

(Affiliations can be found after the references)

Received 8 March 2021 / Accepted 29 April 2021

ABSTRACT

The Low-Frequency Array (LOFAR) Long-Baseline Calibrator Survey (LBCS) was conducted between 2014 and 2019 in order to obtain a set of suitable calibrators for the LOFAR array. In this paper, we present the complete survey, building on the preliminary analysis published in 2016 which covered approximately half the survey area. The final catalogue consists of 30 006 observations of 24 713 sources in the northern sky, selected for a combination of high low-frequency radio flux density and flat spectral index using existing surveys (WENSS, NVSS, VLSS, and MSSS). Approximately one calibrator per square degree, suitable for calibration of ≥ 200 km baselines is identified by the detection of compact flux density, for declinations north of 30° and away from the Galactic plane, with a considerably lower density south of this point due to relative difficulty in selecting flat-spectrum candidate sources in this area of the sky. The catalogue contains indicators of degree of correlated flux on baselines between the Dutch core and each of the international stations, involving a maximum baseline length of nearly 2000 km, for all of the observations. Use of the VLBA calibrator list, together with statistical arguments by comparison with flux densities from lower-resolution catalogues, allow us to establish a rough flux density scale for the LBCS observations, so that LBCS statistics can be used to estimate compact flux densities on scales between 300 mas and $2''$, for sources observed in the survey. The survey is used to estimate the phase coherence time of the ionosphere for the LOFAR international baselines, with median phase coherence times of about 2 min varying by a few tens of percent between the shortest and longest baselines. The LBCS can be used to assess the structures of point sources in lower-resolution surveys, with significant reductions in the degree of coherence in these sources on scales between $2''$ and 300 mas. The LBCS survey sources show a greater incidence of compact flux density in quasars than in radio galaxies, consistent with unified schemes of radio sources. Comparison with samples of sources from interplanetary scintillation (IPS) studies with the Murchison Widefield Array shows consistent patterns of detection of compact structure in sources observed both interferometrically with LOFAR and using IPS.

Key words. instrumentation: interferometers – techniques: interferometric – surveys – galaxies: active – radio lines: galaxies

1. Introduction

The Low-Frequency Array (LOFAR) Long Baseline Calibrator Survey (LBCS; Jackson et al. 2016) was carried out to find radio sources in the northern sky that can be used as calibrators for observations made using the longest baselines (up to ~ 2000 km) of the International LOFAR Telescope (van Haarlem et al. 2013). Calibrators are important to correct for the effects of frequency- and time-dependent phase corrugations on the visibility data of sources, which in the case of LOFAR are introduced mainly by

the effects of the Earth's ionosphere at low radio frequencies. Specifically, the ionosphere induces a time-variable phase and a delay that increases with decreasing frequency, and is generally modelled as a thin layer (Cohen & Röttgering 2009) in which the temporal and spatial variations of phase can be modelled and applied to the data (Intema et al. 2009) provided that the thin-layer approximation holds (Martin et al. 2016). In addition, the independent system clocks in the international stations induce a constant time delay per station. Since a constant time delay corresponds to a differing phase for different frequencies within the band, this results in an artificially induced gradient in the phase of the visibility in each baseline as a function of frequency. Calibrator sources should be bright enough to allow for the delay,

[★] A copy of the catalog is available at the CDS via anonymous ftp to cdsarc.u-strasbg.fr (130.79.128.5) or via <http://cdsarc.u-strasbg.fr/viz-bin/cat/J/A+A/658/A2>

phase, and rate variation with time to be determined. The calibrators need to be close enough in the sky to the target such that the calibrator and the target are susceptible to the same propagation effects. Ideally, they should have known structure, but must have enough structure that is coherent on all baselines to allow a good model to be determined by self-calibration. Paper I of this series (Morabito et al. 2022) discusses in greater detail the use of the data reduction pipeline, which uses sources from the LBCS survey to calibrate LOFAR long-baseline observations.

Interferometric observations are not the only way of detecting compact structure at low frequencies. It is also possible to use observations of interplanetary scintillation (IPS), which are being carried out by the Murchison Widefield Array (MWA) in the southern hemisphere at 162 MHz (Morgan et al. 2018, 2019; Chhetri et al. 2018b,a; Sadler et al. 2019), and by the Pushchino telescope in the north at 111 MHz (Tyul'bashev et al. 2019, 2020). The critical scale for sources to scintillate at these frequencies is $\sim 0.3''$, well matched to the resolution of interferometric observations with International LOFAR.

LOFAR consists of 40 Dutch stations, 24 of which are 'core' stations located within ~ 4 km of the centre of the array in Exloo, Netherlands. There are also 13 international LOFAR stations: 6 in Germany (Effelsberg, Unterweilenbach, Tautenburg, Potsdam-Bornim, Norderstedt, and Jülich), 3 in Poland (Borowiec, Baldy, and Łazy) and 1 each in France, UK, Ireland, and Sweden (Nançay, Chilbolton, Birr, and Onsala, respectively). A LOFAR station in Irbene, Latvia, is operational and one in Medicina, Italy, is being planned at the time of writing, although they did not take part in the LBCS observations. Figure 1 shows the distribution of the LOFAR baseline lengths between the international stations. At 140 MHz a baseline of 1300 km corresponds to a resolution of $0''.3$, so international LOFAR is capable of routinely delivering resolving power of this order, well matched to instruments such as the VLA and e-MERLIN at gigahertz (GHz) frequencies. As a dedicated instrument with a wide field of view, it can deliver sensitivities comparable to low-frequency VLBI (Lenc et al. 2008), but with much greater survey speed and available observing time.

A number of calibrator surveys have been carried out for GHz frequency radio interferometers, such as the JVAS survey (Patnaik et al. 1992) for the VLA and, for very compact sources, the VLBA calibrator list (Beasley et al. 2002) and Radio Fundamental Catalogue¹. However, none of these previous surveys can reliably identify suitable calibration sources for long-baseline imaging with LOFAR. Not all sources in densely populated arcsecond-resolution catalogues contain components smaller than a few tenths of an arcsecond, necessary to be detected on baselines to the outlying International LOFAR stations. On the other hand, catalogues of GHz VLBI sources are sparsely distributed (relative to the smaller isoplanatic patch size at LOFAR frequencies) and may contain sources with inverted radio spectra that are too faint at metre wavelengths (Callingham et al. 2017).

As well as supplying assessments of suitability for array calibration, the LBCS survey also contains scientifically useful information, namely a number of measurements of correlated flux at 140 MHz frequency, on spatial scales below $1''$, for a very large number of sources (~ 25000). This can be used to determine, for example, the compactness of hotspots or sizes of small sources in large samples.

This paper is organised as follows. In Sect. 2, we present the final catalogue, review the selection, discuss the

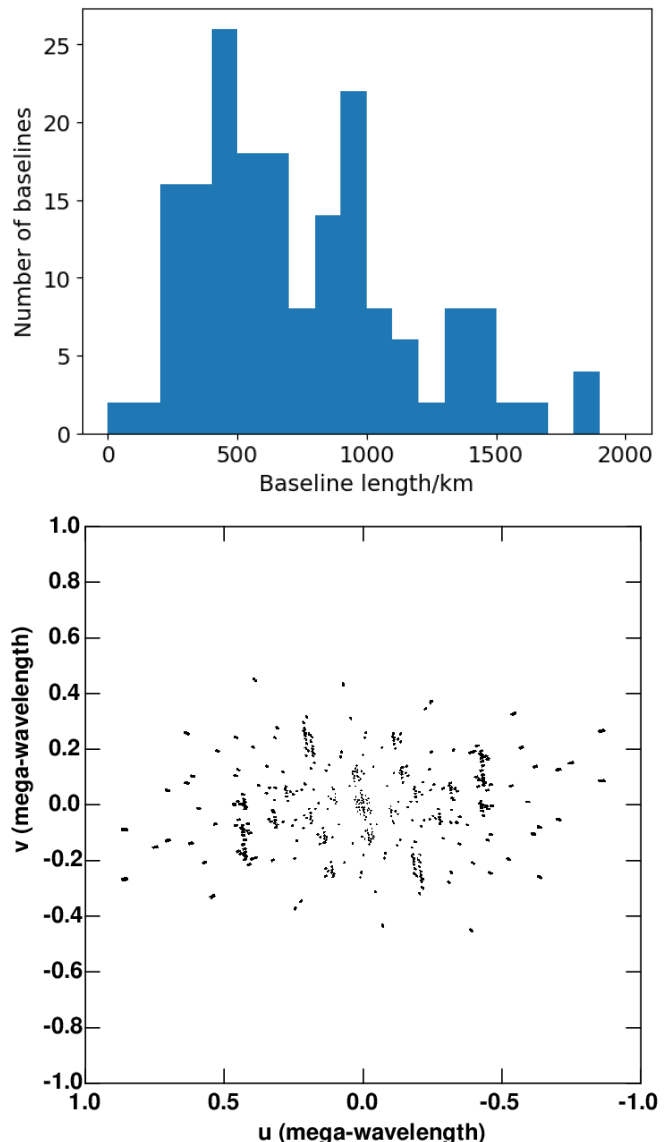


Fig. 1. Lengths and $u-v$ coverage of the baselines used in the LOFAR observations. *Top:* Distribution of LOFAR baseline lengths between international stations. Core and remote LOFAR stations have baselines up to 100 km, so a gap in the $u-v$ coverage still exists between 100 and 200 km. The longest baseline, 1890 km between Birr (Ireland) and Baldy (Poland) will be exceeded soon with the advent of the station in Irbene (Latvia). *Bottom:* Snapshot $u-v$ plane coverage for a source at 34° declination.

observations and data processing, present the final catalogue, describe the coherence measures in the catalogue, and give an updated guide to its use. In this section we also use the catalogue to derive some statistics about the ionospheric phase and delay coherence at 140 MHz frequencies. Finally, in Sect. 3, we derive some results about compact sources at 140 MHz, and we make detailed comparisons between LOFAR-interferometric and MWA IPS observations in a common field.

2. The final catalogue

We briefly review the survey selection, the full details of which are given in Jackson et al. (2016), before updating it to present the statistics of the final catalogue and some elementary results that can be derived from it.

¹ astrogeo.org/rfc

2.1. Selection

An initial pilot project for LBCS (Moldón et al. 2015) covered about 100 square degrees. Subsequently, the vision for the main LBCS survey was to cover the entire northern sky. The candidate sources for the region above 30°N were selected using three surveys, namely the VLA Low-Frequency Sky Survey (VLSS) (Cohen et al. 2007; Lane et al. 2014) at 74 MHz; the Westerbork Sky Survey (WENSS) (Rengelink et al. 1997) at 325 MHz; and an early, pre-publication version of the LOFAR Multifrequency Snapshot Sky Survey (MSSS) (Heald et al. 2015) at 120–160 MHz. The TGSS ADR (Intema et al. 2017) and, at declinations < 30°, the GLEAM survey, carried out at the Murchison Widefield Array (Hurley-Walker et al. 2017) were not available at the time of selection; the selection was also fixed before the publication of the VLSSr catalogue (Lane et al. 2014) which corrected VLSS fluxes by typically 10–20% based on an improved primary beam correction. Building on the observation of Moldón et al. (2015) that the detection probability of a source increases with increasing flux density, and with flattening of the low-frequency spectral index, a goodness statistic g was defined with the form

$$g = 2.0 + \log_{10} S + 2.0\alpha > 0.0955, \quad (1)$$

where S is the WENSS flux density in Jy, and α is the low-frequency spectral index, defined by $S_\nu \propto \nu^\alpha$. Ideally, all sources with a value of g greater than some threshold should be observed. However, the r.m.s. noise level of VLSS is about 100 mJy, which is too high to be certain that all potentially compact sources detectable with LOFAR would be selected for observation. Therefore, an early draft of the MSSS catalogue at 150 MHz was also used for selection. Subsequently, the final MSSS catalogue became available. However, by that stage the observing had already begun, and the observation schedule, which contains observations of many sources at once in particular patches of sky, was fixed.

In the part of the sky north of 30°N, within the footprint of the WENSS 325 MHz catalogue, sources were selected with $g > 0.0955$. A total of 13 070 sources were selected using the spectral index between 74 MHz and 325 MHz using VLSS and WENSS; 919 additional sources that met the criterion were not observed mainly because they were listed as multiple sources in WENSS, and were less likely to have compact structure on sub-arcsecond scales. A further 5809 sources were selected because they appeared to have a relatively flat spectrum using the early MSSS draft, or because they appeared in the VLBA calibrator list, in order to maximise the use of the 30 available beams in each observation.

South of 30°N WENSS is not available, and the selection procedure is described in Jackson et al. (2016); it essentially involves positional coincidences between VLSS sources and sources that are unresolved in the NRAO VLA Sky Survey (NVSS) at 1.4 GHz (Condon et al. 1998). 5915 sources were selected in this way, leading to a total observing list of 24 794 sources. A total of 30 006 observations were made of 24 713 separate sources; some sources were observed more than once.

2.2. Observations and data processing

The observing procedure, as well as the pipeline for the data processing, is described in more detail in Jackson et al. (2016), so we summarise it briefly here before describing the updates to the process. The multi-beaming capabilities of LOFAR were used to observe 30 sources at once using the High-Band Array

Table 1. Observing dates for LBCS epochs, with numbers of observed sources and the stations present for the majority of each observation.

Observation date	Sources	Stations
2014-12-18	210	1–3, 5–7
2015-03-05	1467	1–9
2015-03-18-19	6999	1–9
2015-07-29-30	5791	1–9
2015-11-09	1224	1–9
2015-12-10	1442	1–9
2016-03-08-09	510	1–9
2016-04-07	1145	1–9
2016-04-25-29	2717	2–9
2016-05-26	523	1–8,10–12
2017-03-09	669	1–12
2017-04-19	715	1–2, 4–12
2017-05-10	60	2–12
2017-10-05	1028	1–13
2017-10-31	89	1–13
2018-01-04	748	1–5, 7–11, 13
2018-09-21	197	1–11, 13
2018-10-19	914	1–13
2018-11-08	557	2–13
2018-11-14-15	112	2–13
2019-05-17	382	1–13
2019-05-20	604	1–13
2019-05-26-27	451	1–13
2019-06-08	182	1–13
2019-06-14	192	1–13
2019-06-21	29	1–13
2019-07-15	168	1–13
2019-08-15-16	53	1–5, 7–13
2019-10-05	34	1–2, 4–12
2019-11-18-19	794	2–6, 8–12

Notes. Stations are numbered from 1=DE601 (Effelsberg) to 13=IE613 (Birra).

(HBA) in the DUAL-INNER mode, giving a primary beam FWHM of 3.96° at 144 MHz. Each observation lasted 3 min with a 3 MHz bandwidth beginning at 140.16 MHz per source beam, divided into 64 channels. The core stations were phased up within the dataset after the observations, using calibrator observations, into a superstation (ST001), and into a second superstation (ST002) using only the central six stations. Observations were conducted beginning in 2014 December and ending in 2019. The observation log is summarised in Table 1.

Considerable effort was made to observe at uniformly high elevation above the horizon, due to LOFAR’s reduced sensitivity at lower elevations. 82% of the observations were made at elevations of ≥60°, 3% of observations were made at elevations ≤40° (mainly the most southerly sources) and no observations were made below 34°.

As in the preliminary observations, data were converted to FITS format (Wells et al. 1981), and all baselines to core stations (within about 4 km from the centre of the array) and the nearer remote stations were removed from the dataset². The final averaged data product consisted of 64 × 48.9 kHz channels in

² The final datasets contain the remote stations RS208, RS210, RS310, RS407, RS409, RS508, and RS509.

the frequency direction, and 90×2 s time steps, for each baseline. Global fringe fitting was performed in AIPS (Greisen 2003)³ and implemented using the PARSELTONGUE Python interface (Kettenis et al. 2006). The pipeline used standard settings of a 500 ns delay window and 5 mHz rate window (Jackson et al. 2016) and a 6 s solution interval for the phases in the fringe fit. The scatter in the delay and phase solutions were then used to assess the strength of compact structure in the source; a strong compact source that gives a correlated signal on a particular baseline will give little scatter, whereas a weak signal gives essentially random noise in the signal. The scatter on each station's solutions was used to give designations of 'P' (clear detection of correlated flux indicative of compact structure), 'S' (some relatively low signal-to-noise detection of correlated flux), and 'X' (little or no correlated flux) for correlated signal strength, as described in Fig. 2 of Jackson et al. (2016).

For the full dataset, the previously described procedure was modified slightly. It was found that the quality of the solution could be noticeably affected by the data weights applied to the data prior to fringe fitting. Statistically, the weight should be proportional to σ^{-2} , where σ is the r.m.s. error. However, this rarely gives the best solution since it effectively downweights lower signal-to-noise baselines at the cost of decreasing the number of stations making effective contributions to the solution. Two other weighting schemes were used instead, a σ^{-1} weighting and a weighting independent of σ ; both weightings were applied in the fringe fit and the result that was used corresponded to that which gave the lowest scatter in the fit.

Fringe rate-and-delay maps were also produced for the full dataset, by performing a Fourier transform on a dynamic spectrum plot (as a function of frequency and time) of the complex visibility amplitude for each baseline to ST001, and then correcting the resulting geometric distortion using the correction matrix discussed in Jackson et al. (2016). A bright source with strong correlated signal gives a bright point at the centre of the resulting image, and other sources in the field appear in this image; the field of view of the image is larger for shorter baselines. This procedure allows us to define a signal strength parameter rather more directly than the scatter in the phase and delay solutions, and the use of the central region of the fringe rate-and-delay map guarantees that the signal comes from the source under investigation. This statistic, S , is defined as the sum of the six brightest pixels in the central 10×10 area of the Fourier transform of the dynamic visibility plot, divided by the overall rms and multiplied by 4.4. The scaling is shown in Sect. 2.6 to be such that S is close to a flux scale in milliJanskys for the compact structure. In general, S correlates well with the P, S, or X designation, but is rather more directly related to the data. However, because of its definition in terms of the brightest pixels in the fringe rate-and-delay map, the statistic saturates at low fluxes; non-detections and very weak detections have $100 < S < 150$.

2.3. Information in the catalogue

The information in the results catalogue allows users to perform cone searches to find signal-to-noise data. These data products are available using a cone search⁴. The repository also contains other metadata, which allows judgements to be made about the suitability of observed sources as phase calibrators. This information is used when selecting the best in-field calibrator as

³ Astronomical Image Processing System, distributed by the US National Radio Astronomy Observatory, www.nrao.edu.

⁴ <http://www.lofar-surveys.org/lbcs.html>

described in Morabito et al. (2022). The first five columns give basic data: the index name ('L' followed by a six-digit number) corresponding to the number in the observing catalogue, the right ascension and declination (taken from the WENSS catalogue), and the date and time of the observation.

The sixth column, as in the preliminary catalogue, is a string of 13 characters, each representing the correlated flux determined from the global fringe fit on each antenna. The characters in the string are given in order of telescope name, the first being DE601 (Effelsberg) and the last being IE613 (Birr). The seventh column provides an additional quality flag based on the data itself: 'O' for a good observation; 'A' for an observation with out-of-range amplitudes, defined as high points above 15 times the median amplitude; 'M' and 'X' for failed observations with very few channels and time steps, respectively; and 'Z' for a dataset with more than half of the data flagged as bad. The eighth column, in the same format as the sixth, presents the FT signal-to-noise statistic S in the form of numbers from 0 to 9 for each station. Each number n_S is a code related to the signal-to-noise statistic S by $\text{int}((S - 132)/26.4)$, with values below $S = 132$ represented as 0 and above $S = 370$ represented as 9. The ninth column, as in Jackson et al. (2016) is a quality flag based on the proportion of detected sources in the 30-source observation. This statistic should be used with caution, as it is likely to be systematically lower in areas of the sky where selection is less efficient.

A consolidated catalogue is also available as a raw-text data product, in which duplicate observations have been combined together; the first 12 lines of this catalogue are given in Table 2. In this catalogue the highest signal-to-noise number and the best scatter within the duplicated observations are used for the assessment of each station. Duplicated observations also allow us to assess the reproducibility of the catalogue (Fig. 2). In this figure, we show the difference in the FT signal-to-noise statistic as a cumulative fraction against the difference in the statistic between different observations. For most stations over 80% of measurements are consistent within a difference of 1 in the statistic; the exception is IE613, which was included in relatively few observations.

Other data products have been described in Jackson et al. (2016) and have the same format. In summary, these comprise the fringe rate-and-delay map; the png file with the dynamic phase map, its Fourier transform, and the fringe solutions; and the pickle file containing a summary of all the numerical data derived from the observation⁵.

Although experience is still being accumulated, calibrators with P status for any baseline have always yielded good solutions in test fields, and calibrators without P status but with a reasonable ($n_S > 3$) signal-to-noise statistic have usually given good results.

2.4. Calibrator density

The ideal density of suitable sources in a calibrator survey is at least one per isoplanatic patch, across which the ionospheric phase and delay effects are approximately constant. Experience with long-baseline calibration in moderate to good ionospheric conditions using the main LOFAR international-baseline test

⁵ These data products are also available using a cone search at <http://www.lofar-surveys.org/lbcs.html>. The pickle file can be read using the Python/numpy routine `numpy.load`, using `encoding='latin1'`, `allow_pickle=True`. The parameter S can be obtained for each antenna from the array with the key 'ftsn' by multiplying by 4.4.

Table 2. First 12 lines of the catalogue.

L326144	00:00:00.99	68:10:03.0	2015-03-19	11:39:55	XXX-XXXXX-	O	000-00000-	43	0.004125	68.167500
L450116	00:00:08.95	75:40:14.1	2016-04-07	11:26:12	XSXXXPXP-	O	077194869-	46	0.037292	75.670583
L398791	00:00:37.59	26:12:14.9	2015-07-30	02:26:52	XXXXXXXXXX-	X	000000000-	0	0.156625	26.204139
L269677	00:00:41.62	39:18:03.5	2015-03-05	12:38:02	XXXXXXXXXP-	O	310220025-	56	0.173417	39.300972
L269693	00:00:42.39	35:57:41.6	2015-03-05	12:38:02	PPPPPPXP-	A	959595275-	56	0.176625	35.961556
L410226	00:00:46.92	11:14:29.0	2015-11-09	19:30:06	XXXXXXXXXX-	O	900099909-	30	0.1955	11.241389
L397819	00:00:49.47	32:55:47.7	2015-07-30	02:51:00	SSPSXPSSX-	O	959829591-	41	0.206125	32.929917
L269863	00:00:51.24	51:57:20.2	2015-03-05	12:44:02	PPPPPPPP-	O	999991499-	53	0.2135	51.955611
L269321	00:00:53.12	40:54:01.5	2015-03-05	12:26:02	PPPPPPPP-	O	999999999-	70	0.221333	40.900417
L269649	00:00:54.52	38:02:45.0	2015-03-05	12:38:02	PXPXPXXX-	A	915190108-	56	0.227167	38.045833
L269313	00:01:01.52	41:49:29.2	2015-03-05	12:26:02	PPPPSPPP-	O	999996999-	70	0.256333	41.824778
L410220	00:01:02.32	10:35:49.6	2015-11-09	19:30:06	XXXXXXXXXX-	O	009900009-	30	0.259667	10.597111

Notes. The columns are, in order [1] the LBCS name derived from the observing system ID of the source observation; [2] the right ascension (J2000); [3] the declination (J2000); [4] the observing date; [5] the observing time; [6] a string of letters for each telescope in numerical order from DE601/Effelsberg to IE613/Birr, where P indicates strong correlated flux as measured by the delay and phase solutions to that antenna, S marginal correlated flux, X little or no correlated flux, and a hyphen that the telescope did not participate in the observations; [7] the quality flags, where O is a good observation, A an observation with anomalous amplitudes (but for which the flux indicators should still be reliable), M a failed observation with few channels, X a failed observation with few time steps, and Z an observation with more than half the data flagged; [8] the n_s statistic for each station, based on signal-to-noise (see text); [9] a quality flag based on the group of observations of which the source is a part (see Jackson et al. 2016); and [10,11] the right ascension and declination in decimal form.

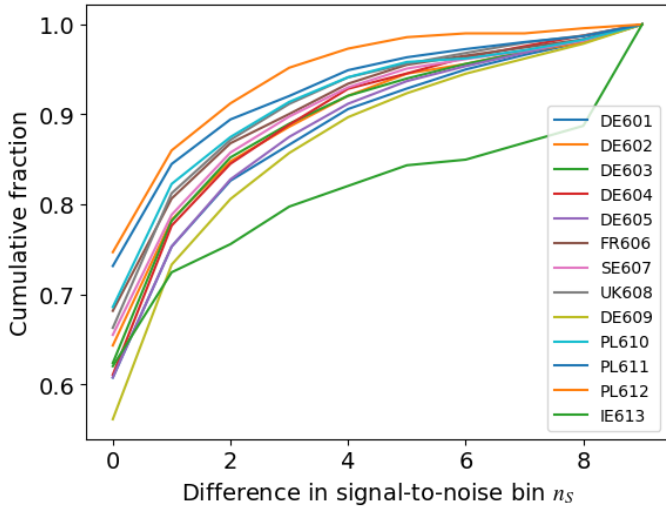


Fig. 2. Reproducibility of the observations. For each station, the fraction of duplicated observations which are consistent within a given difference in the FT signal-to-noise statistic is shown as a function of the difference. The reproducibility is relatively good, normally 80% within a difference of 1 in the numerical value of the parameter.

field (Morabito et al. 2022) suggests that phase solutions are reasonably transferable over about one degree. Figure 3 shows the density of sources with significant correlated flux, smoothed with a 3° smoothing radius. A calibrator density of 1 per square degree is reached for all stations, including more the distant ones, within the northern galactic cap, but decreases quickly below declinations of 30°N due to the lower efficiency of selection at those declinations (Fig. 4). It is also likely that the reduced sensitivity of LOFAR baselines at more southerly declinations impacts the rate of LBCS detection. For example, the fraction of well-detected P sources increases from about 35% of the sample at declination zero to just under 50% at declination 28° on the DE601/Effelsberg station and from 10% to 35% on UK608/Chilbolton. The calibrator density is lower by a factor of

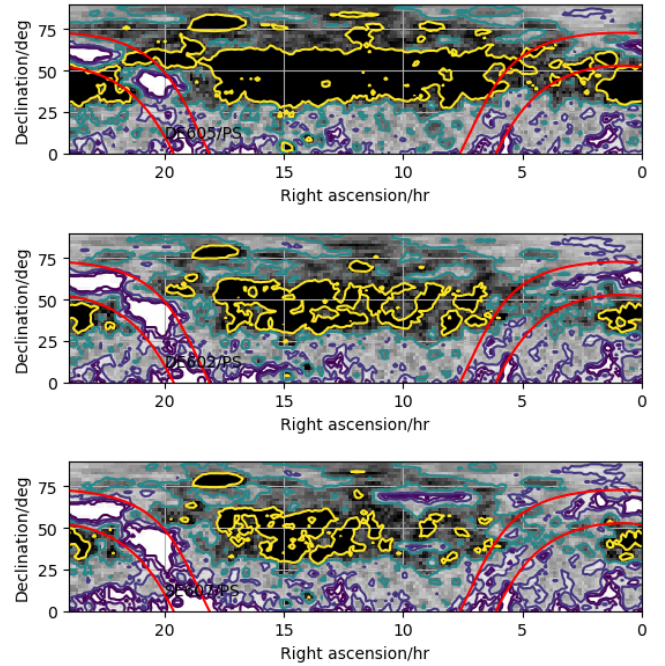


Fig. 3. Average calibrator density, considering sources graded P or S and with a smoothing kernel of 3° , for three different stations: (top) DE605/Jülich, Germany, about 220 km from the core station at Exloo, Netherlands; (middle) DE602/Unterweilenbach, near Munich, Germany, about 580 km; (bottom) SE607/Onsala, Sweden, about 600 km. Contours are at 0.05, 0.1, 0.2, 0.5, and 1.0 sources per square degree, with the yellow contour at the highest density. The red lines indicate Galactic latitudes of $\pm 10^\circ$, and the two large gaps in coverage are close to the bright radio sources Cyg A and Cas A. Some small apparent gaps in coverage at higher Galactic latitudes are due to non-participation of the relevant station in one epoch of observations.

2 close to the Galactic plane, and is close to zero in a 10-degree radius from the bright radio sources Cas A and Cyg A.

In principle, delay and phase calibration can be done using a calibrator close to the target which has significant compact

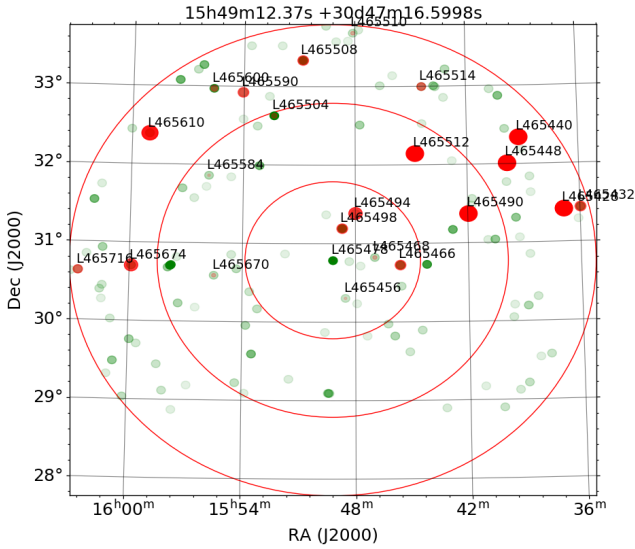


Fig. 4. LBCS sources in a typical field (around the gravitational lens MG 1549+3047), with the decrease in density of sources below declination 30° . Red points are LBCS sources, the size indicating the fraction of stations to which significant signal is detected; green points are WENSS sources, with hue dependent on flux density.

structure to the stations being calibrated. Sometimes, particularly at more southern declinations, the nearest compact source in the observing list is some distance from the target, and in this case it may be useful to look at the fringe rate-and-delay map of nearby sources, which is also available as a data product, to determine whether other nearby sources have compact flux density, and thus appear on the map.

2.5. Ionospheric coherence times as a function of baseline

We repeat the analysis of ionospheric coherence times as a function of baseline length carried out by Jackson et al. (2016), but now with the full dataset. The coherence time is again calculated using the phase solutions from the global fringe fit, to which a second-order polynomial is fitted; the average gradient of this fit can be used to calculate a coherence time as the time needed for a phase slope of this gradient to reach one radian. The core superstation ST001 is used as the reference, and a cumulative fraction plot of coherence time for each station is shown in Fig. 5.

For all stations the coherence time for a 50% chance of coherence, with respect to ST001, is between 100 and 150 s. Stations closer to the core generally have longer coherence times, although the difference is not large.

Cohen & Röttgering (2009) investigated the differential atmospheric refraction between pairs of sources at different separations. They found that the position shifts arising from differential refraction, although generally increasing, only increased slowly for separations $>8^\circ$, corresponding to about 50 km in horizontal distance between cut points of the lines of sight in the ionosphere, at the 450 km height of the ionosphere. Figure 5 gives a measure of correlation between ionospheric phase fluctuations at cut points more widely separated. Because the separation of these points is approximately equal to the baseline lengths for a single source, it implies that some level of correlation is present between cut points separated by 250 km that is not present at 1000 km separation, and that hence the ionosphere retains some correlated phase behaviour on scales of a few hundred kilometres.

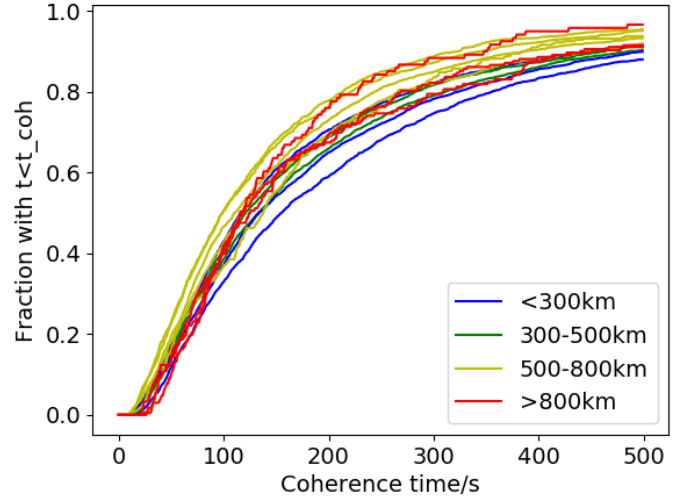


Fig. 5. Coherence times for each station, plotted as a cumulative fractional frequency of coherence time. Stations are colour-coded according to their distance from the core station ST001.

2.6. LBCS flux density calibration

Although the LBCS survey does not have good a priori flux calibration, we can estimate the flux density scale of LBCS by reference to known sources. Because catalogued sources typically have low-frequency flux densities measured using low-resolution surveys (typically between $20''$ and $1'$ resolution) we cannot use published fluxes directly for any source. Instead, we use sources that appear in the VLBA calibrator list (Beasley et al. 2002; Petrov et al. 2005, 2006), and are therefore likely to have all flux concentrated in a compact region. For these sources we can use flux densities in low-resolution catalogues to infer the flux density that will be seen in LBCS. In principle, noise will be added due to variability between the epoch of the catalogue and those of the LBCS observations, which is typically up to a few tens of percent at low radio frequencies (e.g. Fanti et al. 1983).

Figure 6 shows the results of this exercise. For each source within the footprint of both the FIRST (Becker et al. 1995) and WENSS surveys, we calculate its inferred 140 MHz flux density using an extrapolation from the combination of the FIRST and WENSS flux densities. We then take the median flux density calculated, in each bin of sources with a given n_S , and hence a given range of signal-to-noise statistic S , in two cases: sources that are also VLBA calibrators, and all sources. We expect the numbers in the first category to be the same for all stations since point sources should give equal signal on all baselines. This is generally true, although the curves for the furthest stations (PL611 Baldy, PL612 Łazy and IE613 Birr) are very noisy because they came online relatively late in the LBCS observing period, and hence relatively few sources were observed using these stations. The trend is generally linear between $1 \leq n_S < 9$, with $n_S = 1$ corresponding to 160 mJy, and $n_S = 9$ corresponding to >370 mJy of correlated flux (the jump at $n_S = 9$ is due to all sources >370 mJy being included in this bin). Since $n_S = 1$ corresponds to $S = 160$ and $n_S = 9$ corresponds to $S \geq 370$, this provides the basis for the approximate identification of S with the correlated flux density, in mJy, on the compactness scale corresponding to the resolution of the baseline between ST001 and any station.

If we consider all LBCS sources (bottom panel of Fig. 6), the flux densities extrapolated from the FIRST and WENSS surveys

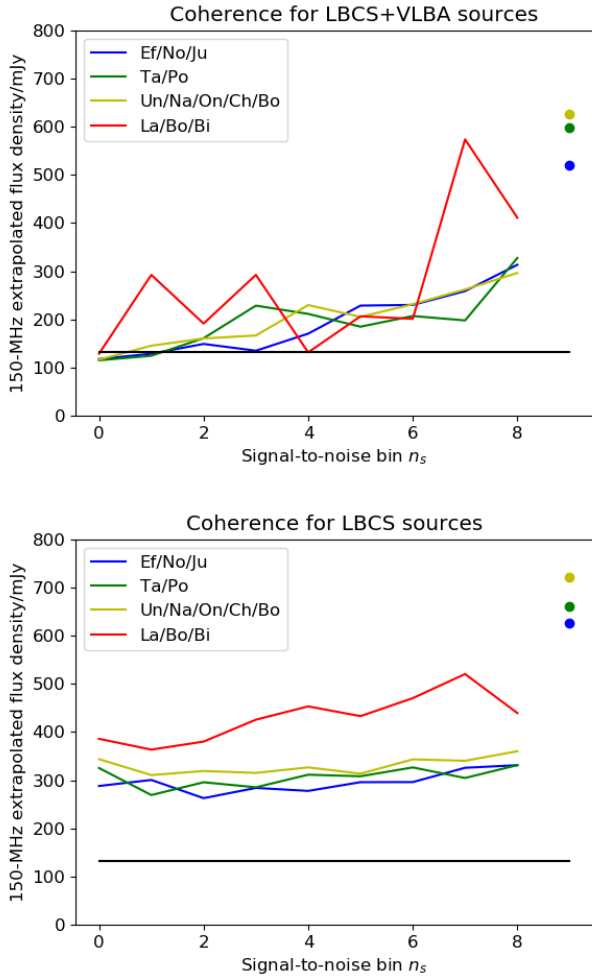


Fig. 6. Extrapolated 150 MHz flux densities vs the LBCS signal-to-noise statistic n_S . *Top*: signal-to-noise bin n_S (with the adopted scaling of ≤ 132 mJy for $n_S = 0$ to ≥ 370 mJy for $n_S = 9$) vs flux for LBCS sources in the VLBA calibrator list. Blue lines (for $n_S < 9$) and points ($n_S = 9$) represent stations close to the Exloo core: DE601/Effelsberg, DE605/Jülich and DE609/Norderstedt; green for somewhat more distant stations: DE603/Tautenberg, DE604/Potsdam; yellow for more distant stations DE602/Unterweilenbach, FR606/Nançay, SE608/Onsala, UK608/Chilbolton, PL610/Borowiec. The red lines represent the furthest stations (PL611/Łazy, PL612/Baldy, IE613/Birr) and are noisy due to the small number of observations. For these stations, the points for $n_S = 9$ (not shown) are above the top of the plot. *Bottom*: as above, but for all sources, not just those in the VLBA calibrator list. The black line is the level registered by observations of blank sky, for which the signal-to-noise statistic saturates.

are, unsurprisingly, greater for any value of the LBCS signal-to-noise statistic. This indicates that a large fraction of LBCS sources have a significant component of flux that is contributed by larger size scales than the $0''.3$ of the international baselines, and that the median contribution of larger-scale flux density is of the order of 30–50%.

We can also plot the LBCS flux density inferred by identifying S with flux density in mJy, against the extrapolated flux density from the FIRST and WENSS surveys directly. If the flux scale derived from Fig. 6 is correct, unresolved sources should have identical flux density on both of these estimations. The results are shown in Fig. 7. The line of equality in this plot is an upper limit to the LBCS flux density, since large-scale structure will be resolved out by LBCS. The form of these plots, with largely unresolved sources clustering close to the line of

equality and a long tail of resolved sources to the right of the line, is as expected if the flux density scale is approximately correct.

Two things are apparent from Fig. 7. The first is that sources with compact flux density below 200 mJy will not be reliably detected by LBCS. The second is that the upper envelope of sources in this diagram lie slightly above the line of equality for the less distant stations (DE601/Effelsberg and DE605/Jülich). One interpretation of this is that the identification of S with flux density in mJy gives a slight overestimate of the actual flux density; the second interpretation is that the extrapolated flux density from FIRST and WENSS is a slight underestimate of the true flux density. The second is less likely as it would imply that unresolved sources steepen at lower frequencies; we actually might expect that the extrapolation gives an overestimate of the true flux density at 140 MHz since more flux density is likely to be resolved by FIRST than by WENSS.

2.7. Signal-to-noise reproducibility in the LoTSS survey

We investigated the signal-to-noise ratio of sources in the field of MG 1549+3047 using both LBCS data and data obtained separately as part of project LC9-012. The LBCS fluxes for each source are from a pointing in the direction of the source, and the LC9-012 fluxes are at one central pointing; therefore, the LBCS fluxes will not be affected by bandwidth and integration time smearing, whereas the LC9-012 fluxes will be, allowing estimates of the amplitude reduction by smearing as a function of distance from a pointing centre. There are six LBCS sources in this field, one in the centre and five others at distances of up to 2° from the field centre. Data processed using the LOFAR-VLBI pipeline (Morabito et al. 2022) were compared with the LBCS data by degrading the LBCS resolution by a factor of 4 in integration time and 2 in frequency to the 97 kHz per channel and 8 s integrations of the post-Split-Directions stage of the pipeline. The sensitivity of the pipelined data decreases by a factor of approximately 6 on a 250 km baseline when moving by about 1 degree from the field centre. This is attributed to a combination of bandwidth smearing, integration time smearing and primary beam effects, together with the field of view of ST001. We are therefore confident that the quality statistics in LBCS can be used to predict the expected quality of calibration for LBCS calibrators in standard observations, modulo ionospheric conditions.

3. Source statistics in the LBCS sample

3.1. Point sources from FIRST

The FIRST survey (Becker et al. 1995) is a survey of a large area of the northern sky carried out at an observing wavelength of 20 cm using the VLA in B-configuration, with a maximum baseline of 12 km and a consequent resolution of about 4–5 arcseconds. In the area of overlap with LBCS and WENSS, a sample of all sources unresolved by FIRST was selected, which therefore have an intrinsic size less than 5 arcseconds. In Fig. 8 are plotted the 140 MHz flux densities for these sources, extrapolated from the FIRST 1.4 GHz and WENSS 325 MHz flux densities, the latter corrected to the Scaife & Heald (2012) flux scale, against the FIRST-WENSS spectral index. This exercise illustrates both the bias in the LBCS selection, and the sensitivity limits of the LBCS survey. The selection by the g parameter favours objects with a high flux density and flatter spectral index. Within this selected region, we again find that the sources with a significant correlated flux are also predominantly bright and less steep-spectrum.

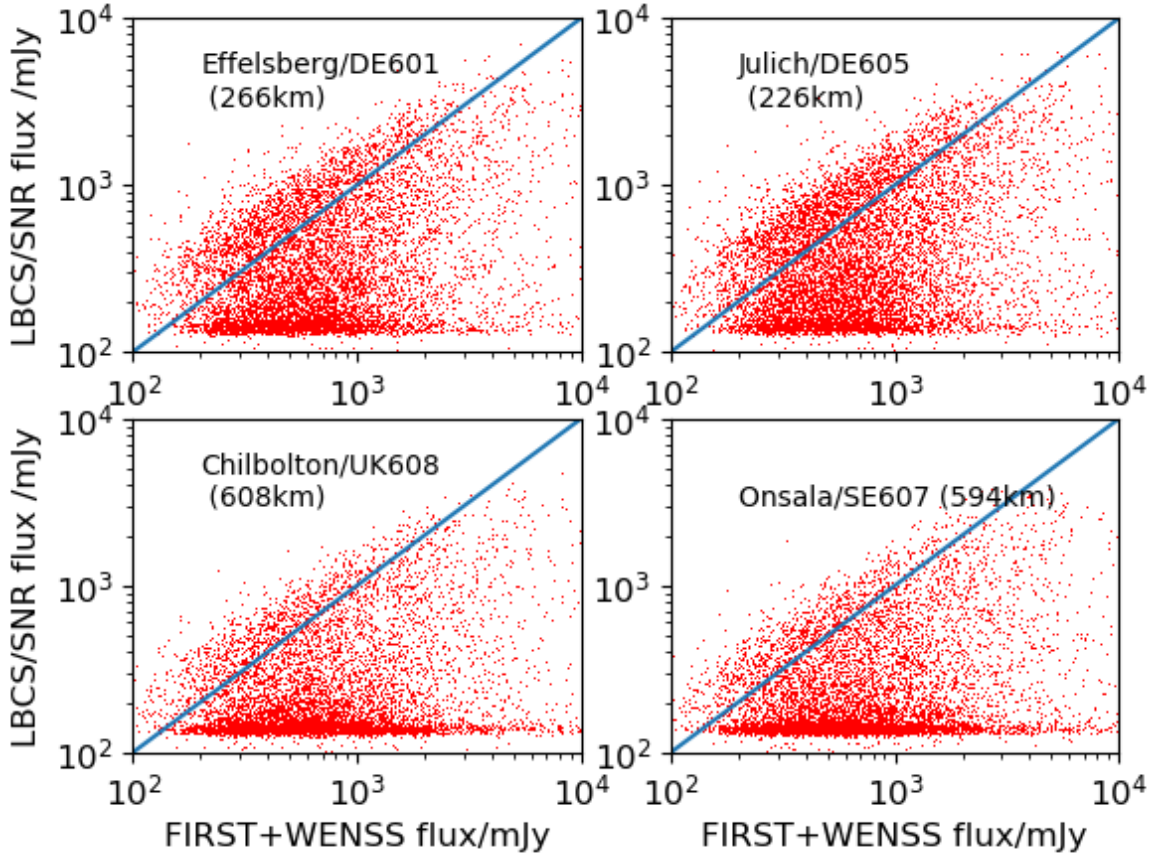


Fig. 7. Inferred flux from the LBCS survey measured by the signal-to-noise statistic S . This is plotted against inferred flux from power-law extrapolation between FIRST and WENSS flux densities for four different international stations. LBCS flux densities inferred in this way are unreliable below the lower saturation level of about 150 mJy. Above this level most LBCS flux densities are (unsurprisingly) lower than the corresponding flux densities from lower-resolution surveys.

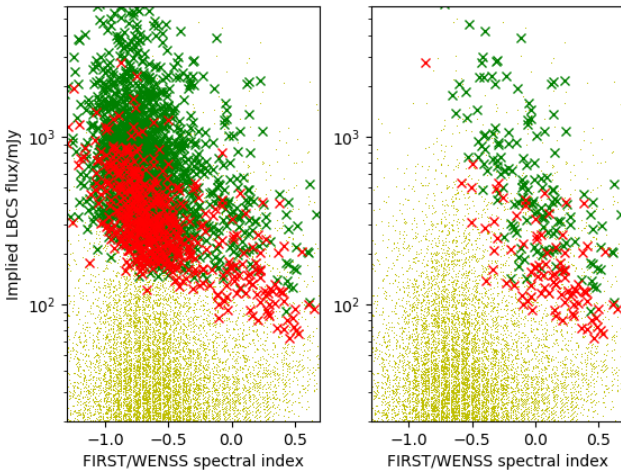


Fig. 8. Flux density for LBCS sources coincident with an unresolved FIRST source and a WENSS source vs FIRST/WENSS spectral index. The light green crosses (in background) indicate the general population of WENSS/FIRST coincidences, dark green crosses represent those sources observed with LBCS and detected, and red crosses represent the sources observed with LBCS but not detected. The *right panel* contains only sources that are also VLBA calibrators.

The sensitivity limit of the survey can be calibrated as before by using the VLBA calibrator list (Fig. 8, right panel). The sources coincident between the LBCS and the VLBA calibrator list are a representative sample of VLBA sources both in

flux density and spectral index. Again we see that sources of 140 MHz implied flux density lower than ~ 200 mJy are undetected because they fall below the sensitivity limit of the survey, and not because they do not have a large enough percentage of their flux density on small angular scales. The majority of the sources above this limit, if they are not detected, have relatively steep spectral indices, as expected.

Figure 9 presents the same plot as Fig. 7, but for the unresolved FIRST sources. This figure makes it apparent that the majority of the FIRST-unresolved sources (i.e. $<5''$) preserve most of the flux density on 200 km baselines (to Effelsberg and Jülich), corresponding to about $2''$ resolution. At 300 mas resolution at least 50% of them have lost a significant proportion of their correlated flux density. This result suggests that the predominant population, even given the LBCS selection, consists of compact steep-spectrum (CSS) sources (O’Dea & Saikia 2021) rather than classical point sources with sizes limited by synchrotron self-absorption. It also suggests that careful studies of calibrator densities will need to be undertaken before extending low-frequency arrays such as LOFAR to still longer baselines.

3.2. Hotspots and 3CRR sources

The revised Third Cambridge Catalogue of Radio Sources (3CRR) (Laing et al. 1983) contains those extragalactic sources that have a 178 MHz flux density (KPW scale) ≥ 10 Jy, declination $\geq 10^\circ$, and Galactic latitude $\geq 10^\circ$ or $\leq -10^\circ$. They contain a mixture of large-scale lobe-dominated sources with structures of

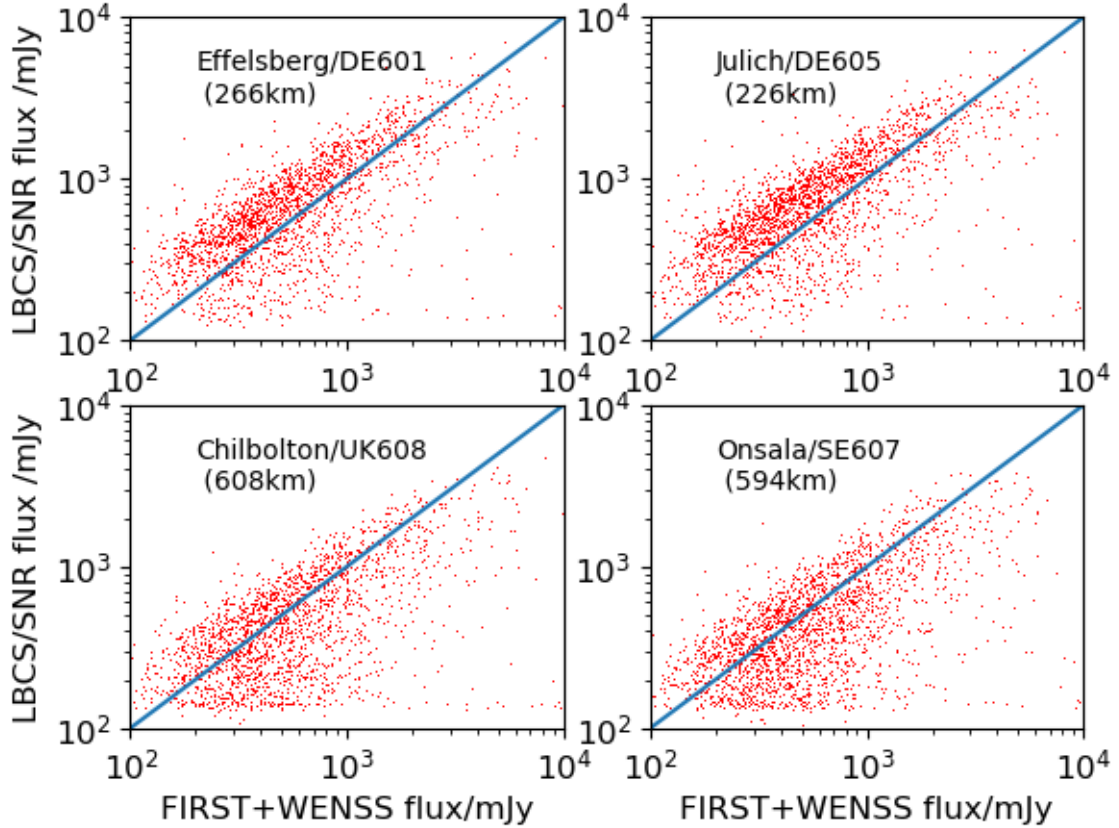


Fig. 9. As for Fig. 7, but for unresolved FIRST sources.

typical sizes >100 kpc, corresponding to $30''$ which is resolved out on all the long baselines, together with more compact sources such as CSS (O’Dea & Saikia 2021) and a few flat-spectrum quasars (e.g. 3C345, 3C454.3). Because of the LBCS selection criteria, we expect to see a fraction of 3CRR sources in the LBCS catalogue. We find that there are 82 3CRR sources that were observed in LBCS.

We use previous compilations of largest angular and linear sizes in 3CRR⁶ in the form of an updated version of the sample presented in Laing et al. (1983). Figure 10 shows the relation of size to LBCS type (P, S, or X) for baselines to stations DE605/Jülich and FR606/Nançay. As expected, there is evidence that the largest sources, which are on average thought to have less flux density in compact structure, are generally less consistently detected by LBCS, particularly on the longer baselines.

In addition to correlations with size, sources are more likely to be detected if they have flatter low-frequency spectral indexes; for such sources more flux density should appear at smaller spatial scales corresponding to core–jet emission rather than extended steep spectrum lobe emission. This appears to be the case (Fig. 11).

3.3. Quasars and radio galaxies

We can also use the information about compactness provided by LBCS to investigate differences in the strength of flux density in compact components separately for sources identified as quasars and those identified in radio galaxies. To this end, we take the sample of LBCS sources in the overlapping WENSS/FIRST

footprint and compare the catalogue with the milliquas compilation (Flesch 2019); 19% of the sources are listed as quasars in this catalogue, the proportion of which decreases slightly with FIRST major axis size (Fig. 12).

The difference between quasars and radio galaxies has been a subject of debate for 30 yr, with at least some part of the answer probably due to orientation effects (Scheuer 1987; Peacock 1987; Barthel 1989). Radio-loud active galactic nuclei in general contain relativistically moving radio-emitting plasma in the centre, with emitted radiation having a flat spectrum, together with larger-scale jets and steep-spectrum lobe emission spread over kiloparsecs. If the jet axis is close to the line of sight to the observer, the core–jet regions become brighter due to Doppler boosting (Blandford & Rees 1978; Orr & Browne 1982), and the central regions, otherwise hidden by a dust–molecular torus, become visible. Since these central regions emit broad optical emission lines, the object is then classified as a quasar. For a given intrinsic radio power, quasars should then have brighter compact radio components than radio galaxies, as well as smaller linear size. Within the sample of quasars, flat-spectrum quasars, oriented close to the line of sight and dominated by the relativistically boosted core–jet emission, should have smaller projected linear sizes than steep-spectrum quasars, although at low frequencies we expect the emission to be dominated by the lobes for all but a small number of sources. Earlier LOFAR studies in the Bootes field (Morabito et al. 2017) yielded consistency with unified schemes in that linear sizes of radio galaxies exceeded those of quasars, contrary to earlier results (Singal 2014).

For LBCS we expect in general that sources identified as quasars should have higher fluxes in compact structure on the 300 mas scale. This turns out to be the case. We define a combined correlation statistic as the fraction of stations for which a

⁶ <https://astroherzberg.org/people/chris-willott/research/3crr/>

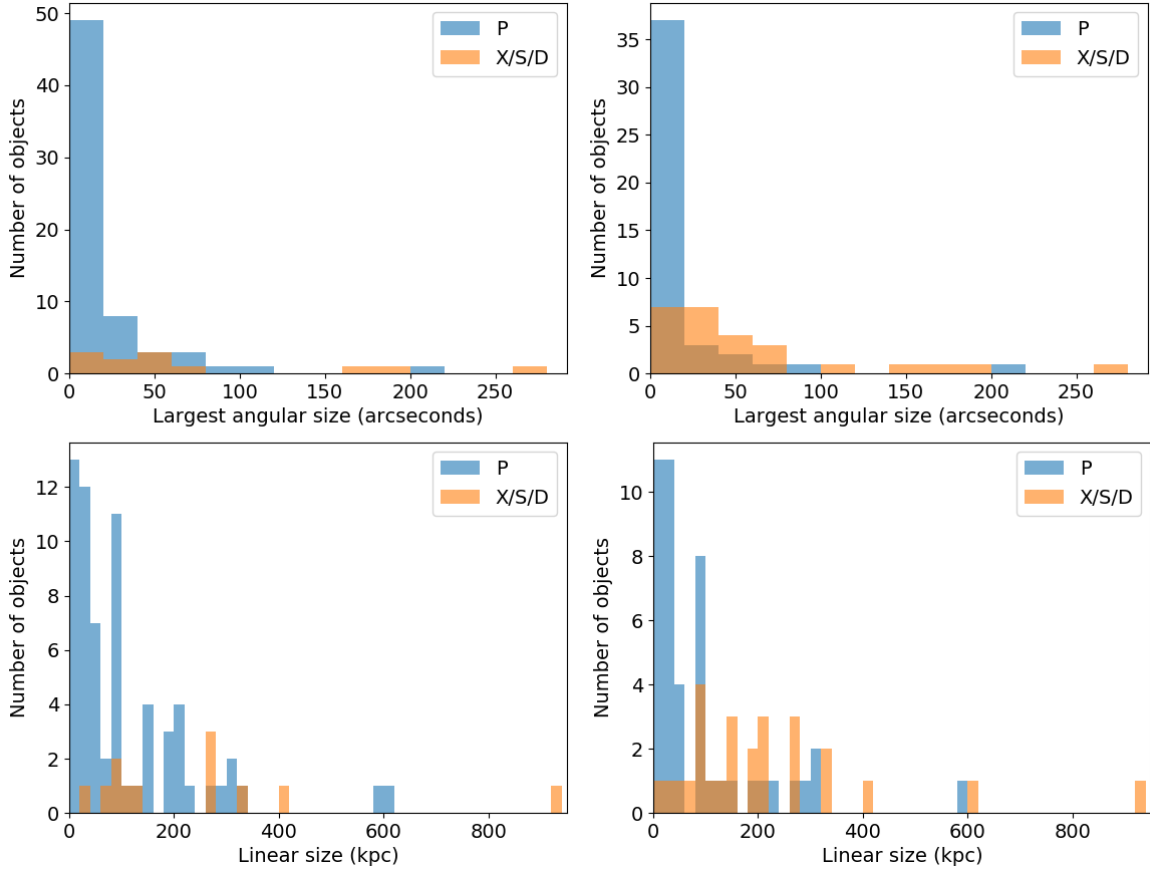


Fig. 10. Distribution of the largest angular sizes and linear sizes of 3CRR sources in LBCS for baselines to stations DE605/Jülich (*left panels*) and FR606/Nançay (*right panels*).

source is seen as P and plot this as a cumulative distribution for quasars and non-quasars (Fig. 13).

For a station close to the core (DE601/Effelsberg) we find a 55% fraction of quasars identified as P, with significant compact radio flux density, but a 40% fraction of non-quasars. For stations further from the core, we also obtain this difference, but a lower fraction overall (34% P for quasars and 24% for non-quasars). Quasars, however, are generally brighter overall because of a significant number of quasars with extrapolated 140 MHz flux density >2 Jy. If we exclude them the median flux for quasars and non-quasars is virtually equal, but the compact fraction is still different (50% and 37% respectively for quasars and non-quasars for DE601, and 30% and 22% for UK608/Chilbolton), so our results here are consistent with unification.

These results are also consistent with the findings of Deller & Middelberg (2014) in studies of FIRST sources at milliarcsecond resolution and higher frequency (1.4 GHz). Here, 30–35% of sources identified as quasar-like in the Sloan Digital Sky Survey were found to be very compact, with a lower fraction for non-quasars. This lower fraction for non-quasars was found to increase at low flux density levels, which are well below the ~ 100 mJy limit of LBCS detections.

3.4. Comparison with MWA interplanetary scintillation observations

The Murchison Widefield Array (MWA; Tingay et al. 2013) is a low-frequency radio telescope located in the southern hemisphere in Western Australia at a latitude of 26.7° south. While

it shares many design characteristics with LOFAR, 128 tiles are correlated individually, providing both a wide field of view and excellent UV coverage.

The maximum baseline length for MWA Phase II is only around 6km, and so the resolution of the interferometer is only $\sim 1'$. However, Morgan et al. (2018) have used it to conduct a survey of sources that show IPS which probes similar spatial scales to the LBCS. Most recently the Phase-II configuration (Wayth et al. 2018), which is a factor of two more sensitive for IPS observations (Beardsley et al. 2019), has been used to conduct an IPS survey at 160 MHz (Chhetri et al., in prep.).

For a detailed comparison of LBCS and the MWA IPS survey, we define a region $7\text{ h} < \text{RA} < 11\text{ h}$, $+6^\circ < \delta < +18^\circ$ where both surveys have good data. Histograms of the mean of the S statistic across all baselines are shown for all sources within this region in Fig. 14, separately for sources with and without an IPS counterpart. IPS confirms the presence of a compact source for almost all sources with $S > 200$ mJy, the limits of which are reliably detected by LBCS.

Interplanetary scintillation can provide information beyond detection versus non-detection. Chhetri et al. (2018b) defines the normalised scintillation index (NSI) as the ratio of the scintillating flux density to the mean flux density of the source (i.e. the source flux density at the interferometric resolution of the MWA normalised so that a point source would have a NSI of 1. A NSI of less than one therefore indicates that a source that has some structure on scales that lie between the critical scale for IPS (approximately $0.3''$) and the interferometric resolution of the MWA. The flux density of the source on IPS scales can

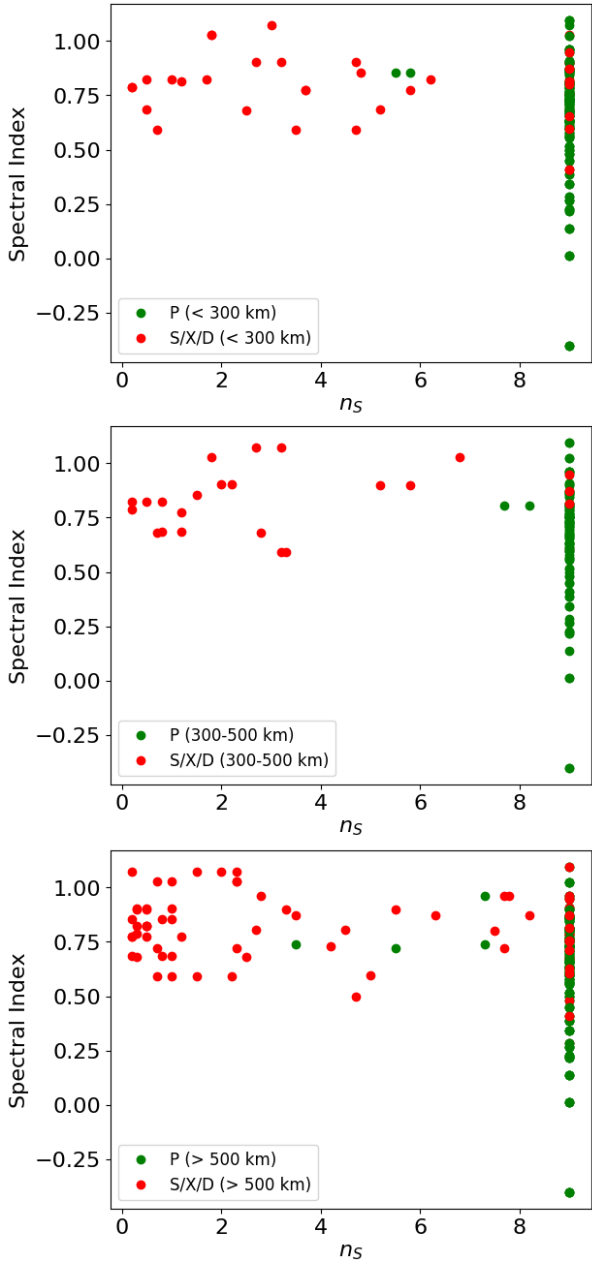


Fig. 11. Distribution of spectral index at (rest frame) 151 MHz vs the signal-to-noise parameter n_s of LBCS sources on stations with baseline lengths to ST001 of <300 km (*top*), 300–500 km (*centre*), and >500 km (*bottom*). The baseline lengths are DE605 (226 km), DE609 (227 km), DE601 (266 km), DE603 (396 km), DE604 (419 km), DE602 (581 km), SE607 (594 km), UK608 (602 km), and FR606 (700 km).

be calculated by multiplying the NSI by the flux density of the source measured by the MWA at the relevant frequency when used as a standard interferometer. For this we use the GLEAM survey (Hurley-Walker et al. 2017).

The spatial scales that contribute to the NSI are shown in more detail in Fig. 15, which illustrates that they match those probed by LBCS very closely. Nonetheless, the measurements differ in some of the details. The LBCS makes spot measurements of the visibility amplitude at a small number of discrete points on the UV plane (see Fig. 1), whereas in weak scintillation the NSI is a weighted sum of the visibility amplitude squared, where the weighting depends on the location in the

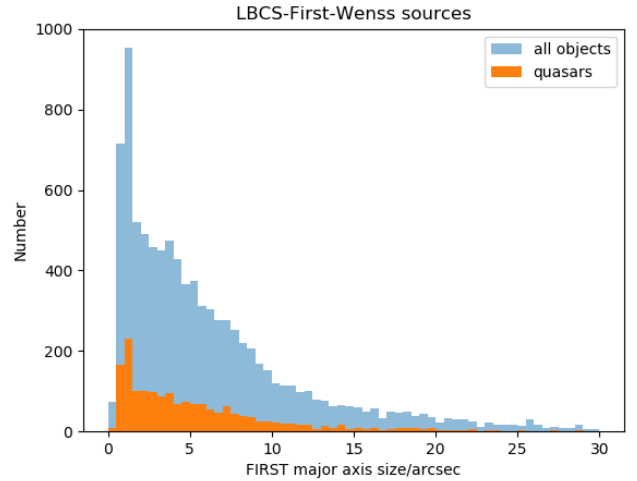


Fig. 12. Proportion of LBCS-WENSS-FIRST coincidences identified as quasars in milli-quas (q or Q in descriptor) compared to the statistics for all objects regardless of description.

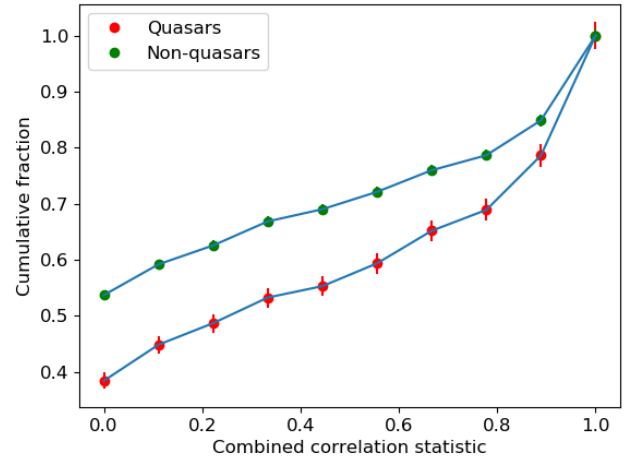


Fig. 13. Coherence of quasars and non-quasars, in the form of the cumulative fraction with respect to the signal-to-noise statistic of detection of correlated flux in LBCS (see text).

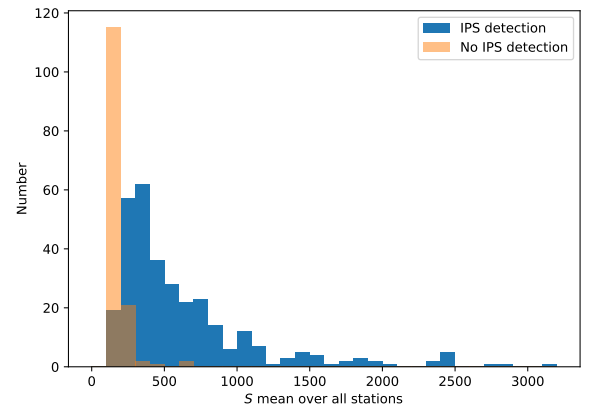


Fig. 14. Histogram of the mean LBCS statistic across all baselines for sources with and without IPS counterparts.

visibility plane. Following Eq. (3.2) in Narayan (1993), Fig. 15 plots the weight of annuli of equal area in the UV plane. This radial symmetry is valid under the assumption of isotropy in the turbulence responsible for the scintillation in the plane of

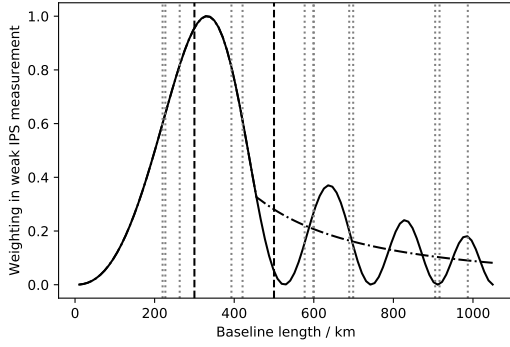


Fig. 15. Contribution of different spatial scales (parameterised as baseline lengths at 140 MHz) to the IPS scintillation index. Dotted vertical lines are LOFAR baselines, dashed lines delineate the three categories of baseline lengths defined in the text.

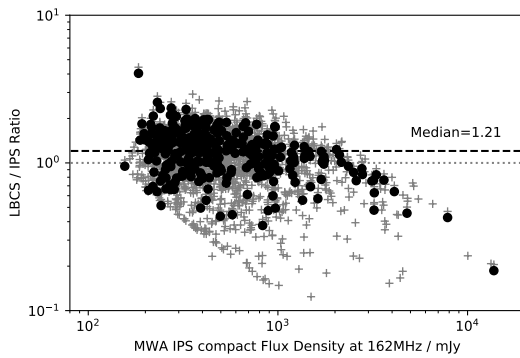


Fig. 16. Comparison of IPS flux densities compared with those inferred from LBCS via Eq. (2). Plus signs (+) are all LBCS sources with a counterpart; filled circles are those sources in the region $7h < RA < 11h$, $+6^\circ < \delta < +18$ where both surveys have good data.

the sky; we further assume thin-screen Kolmogorov turbulence, located at a typical distance of 1 AU. We also plot the LOFAR baseline lengths as vertical lines, and to quantitatively compare the LBCS with IPS we use the following procedure. We first split the LOFAR baselines into three categories: short (<300 km), intermediate ($300 \text{ km} \leq B < 500$ km), and long ($B \geq 500$ km). We additionally classify Onsala as intermediate because it is the only baseline to be sufficiently foreshortened at $DEC \sim 15^\circ$ to change category. For each LBCS source we then calculate a weight w_i for the i th baseline such that the baselines in each category all have the same weight, and the sum of the weights of the baselines in each category have ratios 4:3:3 for short, intermediate, and long, respectively, reflecting the integral of the IPS weighting function over ranges corresponding to each of the three baseline categories.

The scintillation index depends on the visibility amplitude squared. Therefore, we calculate an IPS compact flux density as

$$S_{\text{IPS}} = \frac{\sum_{i=0}^{i=N_{\text{baseline}}} w_i S_i^2}{\sum_{i=0}^{i=N_{\text{baseline}}} w_i S_i}, \quad (2)$$

where S_i is the signal strength statistic of the i th baseline described in Sect. 2.3. This can then be directly compared with the MWA NSI multiplied by the GLEAM flux density (Hurley-Walker et al. 2017) across the IPS observing band. This comparison is shown in Fig. 16, which shows excellent agreement for those sources in common, especially considering that LBCS is close to its southern extreme. We note that S appears to saturate at approximately 2 Jy .

4. Conclusion

The LOFAR Long-Baseline Calibrator Survey (LBCS) has now concluded. It covers the whole of the northern sky, and provides a calibrator network suitable for calibration of long-baseline observations with low-frequency telescopes. The calibrator density decreases at declinations below 30°N , due to relative difficulty in selecting flat-spectrum candidate sources in this area of the sky and to loss of sensitivity at lower elevations. Supplementary observations may be undertaken in the future using low-frequency data at more southern declinations (e.g. Hurley-Walker et al. 2017) and the main LoTSS survey in the north, to fill in particular gaps in the coverage. The LBCS catalogue is publicly available, and can be used to choose suitable calibrators for any observation.

We used the source statistics to investigate the nature of the LBCS calibrators. For unresolved sources in FIRST, we find that more than 50 percent lose a significant portion of correlated flux density between scales of $2''$ and $0''.3$, suggesting that they are CSS sources. Comparison with 3CRR sources shows that the largest sources are generally less detected by LBCS on the smallest scales. Those which are detected tend to have flat spectra, consistent with the dominant sources of flux density being concentrated on small scales in either core-jet or hotspot emission. Dividing all LBCS sources into quasars and non-quasars using the milliquas database, we find that quasars are generally more compact than non-quasars, which is consistent with orientation-based unification theory. Finally, comparison with MWA allows a study of interplanetary scintillation (IPS). There is a good agreement between the flux density on IPS scales $\geq 0''.3$ measured by LBCS and that calculated using data from the MWA IPS survey and GLEAM. Given this good agreement, it is very likely that IPS detections can be used to select candidate calibrators with very high reliability.

In the future, development of the LOFAR-VLBI pipeline will allow for automatic generation of standardised images for calibrated LBCS sources. We hope to add these community-generated images of LBCS calibrators to the publicly available database of information.

Acknowledgements. We thank Benito Marcote for comments on the paper. Part of this work was supported by LOFAR, the Low Frequency Array designed and constructed by ASTRON, that has facilities in several countries, that are owned by various parties (each with their own funding sources), and that are collectively operated by the International LOFAR Telescope (ILT) foundation under a joint scientific policy. This scientific work makes use of the Murchison Radio-astronomy Observatory, operated by CSIRO. We acknowledge the Wajarri Yamatji people as the traditional owners of the Observatory site. Support for the operation of the MWA is provided by the Australian Government (NCRIS), under a contract to Curtin University administered by Astronomy Australia Limited. We acknowledge the Pawsey Supercomputing Centre which is supported by the Western Australian and Australian Governments. A.D. acknowledges support by the BMBF Verbundforschung under the grant 052020. L.K.M. is grateful for support from the UKRI Future Leaders Fellowship (grant MR/T042842/1). J. Moldón acknowledges financial support from the State Agency for Research of the Spanish MCIU through the ‘‘Center of Excellence Severo Ochoa’’ award to the Instituto de Astrofísica de Andalucía (SEV-2017-0709) and from the grant RTI2018-096228-B-C31 (MICIU/FEDER, EU). J.P.M. acknowledges support from the Netherlands Organization for Scientific Research (NWO, project number 629.001.023) and the Chinese Academy of Sciences (CAS, project number 114A11KY5B20170054).

References

- Barthel, P. D. 1989, *ApJ*, 336, 606
- Beardsley, A. P., Johnston-Hollitt, M., Trott, C. M., et al. 2019, *PASA*, 36, e050
- Beasley, A. J., Gordon, D., Peck, A. B., et al. 2002, *ApJS*, 141, 13
- Becker, R. H., White, R. L., & Helfand, D. J. 1995, *ApJ*, 450, 559

- Blandford, R. D., & Rees, M. J. 1978, *Phys. Scr.*, **17**, 265
- Callingham, J. R., Ekers, R. D., Gaensler, B. M., et al. 2017, *ApJ*, **836**, 174
- Chhetri, R., Ekers, R. D., Morgan, J., Macquart, J. P., & Franzen, T. M. O. 2018a, *MNRAS*, **479**, 2318
- Chhetri, R., Morgan, J., Ekers, R. D., et al. 2018b, *MNRAS*, **474**, 4937
- Cohen, A. S., & Röttgering, H. J. A. 2009, *AJ*, **138**, 439
- Cohen, A. S., Lane, W. M., Cotton, W. D., et al. 2007, *AJ*, **134**, 1245
- Condon, J. J., Cotton, W. D., Greisen, E. W., et al. 1998, *AJ*, **115**, 1693
- Deller, A. T., & Middelberg, E. 2014, *AJ*, **147**, 14
- Fanti, C., Fanti, R., Ficarra, A., et al. 1983, *A&A*, **118**, 171
- Flesch, E. W. 2019, ArXiv e-prints, [arXiv:1912.05614]
- Greisen, E. W. 2003, AIPS, the VLA, and the VLBA, ed. A. Heck, **285**, 109
- Heald, G. H., Pizzo, R. F., Orrú, E., et al. 2015, *A&A*, **582**, A123
- Hurley-Walker, N., Callingham, J. R., Hancock, P. J., et al. 2017, *MNRAS*, **464**, 1146
- Intema, H. T., van der Tol, S., Cotton, W. D., et al. 2009, *A&A*, **501**, 1185
- Intema, H. T., Jagannathan, P., Mooley, K. P., & Frail, D. A. 2017, *A&A*, **598**, A78
- Jackson, N., Tagore, A., Deller, A., et al. 2016, *A&A*, **595**, A86
- Kettenis, M., van Langevelde, H. J., Reynolds, C., & Cotton, B. 2006, *ASP Conf. Ser.*, **351**, *Astronomical Data Analysis Software and Systems XV*, eds. C. Gabriel, C. Arviset, D. Ponz, & S. Enrique, 497
- Laing, R. A., Riley, J. M., & Longair, M. S. 1983, *MNRAS*, **204**, 151
- Lane, W. M., Cotton, W. D., van Velzen, S., et al. 2014, *MNRAS*, **440**, 327
- Lenc, E., Garrett, M. A., Wucknitz, O., Anderson, J. M., & Tingay, S. J. 2008, *ApJ*, **673**, 78
- Martin, P. L., Bray, J. D., & Scaife, A. M. M. 2016, *MNRAS*, **459**, 3525
- Moldón, J., Deller, A. T., Wucknitz, O., et al. 2015, *A&A*, **574**, A73
- Morabito, L. K., Williams, W. L., Duncan, K. J., et al. 2017, *MNRAS*, **469**, 1883
- Morabito, L. K., Jackson, N. J., Mooney, S., et al. 2022, *A&A*, **658**, A1 (LOFAR-VLBI S1)
- Morgan, J. S., Macquart, J. P., Ekers, R., et al. 2018, *MNRAS*, **473**, 2965
- Morgan, J. S., Macquart, J. P., Chhetri, R., et al. 2019, *PASA*, **36**, e002
- Narayan, R. 1993, in *Pulsars as Physics Laboratories*, eds. J. M. Shull, & H. A. Thronson, 151
- O’Dea, C. P., & Saikia, D. J. 2021, *A&ARv*, **29**, 3
- Orr, M. J. L., & Browne, I. W. A. 1982, *MNRAS*, **200**, 1067
- Patnaik, A. R., Browne, I. W. A., Wilkinson, P. N., & Wrobel, J. M. 1992, *MNRAS*, **254**, 655
- Peacock, J. A. 1987, in *NATO Advanced Study Institute (ASI) Series C*, **208**, *Astrophysical Jets and their Engines*, ed. W. Kundt, 185
- Petrov, L., Kovalev, Y. Y., Fomalont, E., & Gordon, D. 2005, *AJ*, **129**, 1163
- Petrov, L., Kovalev, Y. Y., Fomalont, E. B., & Gordon, D. 2006, *AJ*, **131**, 1872
- Rengelink, R. B., Tang, Y., de Bruyn, A. G., et al. 1997, *A&AS*, **124**, 259
- Sadler, E. M., Chhetri, R., Morgan, J., et al. 2019, *MNRAS*, **483**, 1354
- Scaife, A. M. M., & Heald, G. H. 2012, *MNRAS*, **423**, L30
- Scheuer, P. A. G. 1987, in *Superluminal Radio Sources*, eds. J. A. Zensus, & T. J. Pearson, 104
- Singal, A. K. 2014, *AJ*, **148**, 16
- Tingay, S. J., Goeke, R., Bowman, J. D., et al. 2013, *PASA*, **30**, e007
- Tyul’bashev, S. A., Chashei, I. V., & Grigor’eva, E. A. 2019, *Astron. Rep.*, **63**, 479
- Tyul’bashev, S. A., Chashei, I. V., Subaev, I. A., & Kitaeva, M. A. 2020, *Astron. Rep.*, **64**, 406
- van Haarlem, M. P., Wise, M. W., Gunst, A. W., et al. 2013, *A&A*, **556**, A2
- Wayth, R. B., Tingay, S. J., Trott, C. M., et al. 2018, *PASA*, **35**, 33
- Wells, D. C., Greisen, E. W., & Harten, R. H. 1981, *A&AS*, **44**, 363
- ⁸ Swinburne University of Technology, Hawthorne, Victoria, Australia
- ⁹ Instituto de Astrofísica de Andalucía (IAA, CSIC), Glorieta de las Astronomía, s/n, 18008 Granada, Spain
- ¹⁰ Centre for Astrophysics Research, University of Hertfordshire, Hatfield AL10 9EU, UK
- ¹¹ CSIRO Astronomy and Space Science, PO Box 1130, Bentley WA 6102, Australia
- ¹² Thüringer Landessternwarte, Sternwarte 5, 07778 Tautenburg, Germany
- ¹³ Kapteyn Astronomical Institute, Groningen University, The Netherlands
- ¹⁴ Currently at Shell Technology Center, 562149, Bangalore, India
- ¹⁵ Science and Technology B.V., Delft, The Netherlands
- ¹⁶ Eindhoven University of Technology, De Rondom 70, 5612 AP Eindhoven, The Netherlands
- ¹⁷ DIFA - Università di Bologna, via Gobetti 93/2, 40129 Bologna, Italy
- ¹⁸ INAF - IRA, Via Gobetti 101, 40129 Bologna, Italy
- ¹⁹ IRA – INAF, via P. Gobetti 101, 40129 Bologna, Italy
- ²⁰ University of Hamburg, Gojenbergsweg 112, 21029 Hamburg, Germany
- ²¹ Research School of Astronomy & Astrophysics, Mt. Stromlo Observatory, Cotter Road, Weston Creek, ACT 2611 Australia
- ²² Max-Planck Institute for Astrophysics, Karl-Schwarzschild-Straße 1, 85748 Garching, Germany
- ²³ Astrophysical Institute, Vrije Universiteit Brussel, Pleinlaan 2, 1050 Brussels, Belgium
- ²⁴ Department of Astrophysics/IMAPP, Radboud University Nijmegen, PO Box 9010, 6500 GL Nijmegen, The Netherlands
- ²⁵ Hamburger Sternwarte, Universität Hamburg, Gojenbergsweg 112, 21029, Hamburg, Germany
- ²⁶ INAF - Istituto di Radioastronomia, via P. Gobetti 101, 40129, Bologna, Italy
- ²⁷ LPC2E - Université d’Orléans / CNRS, 45071 Orléans cedex 2, France
- ²⁸ Station de Radioastronomie de Nançay, Observatoire de Paris, PSL Research University, CNRS, Univ. Orléans, OSUC, 18330 Nançay, France
- ²⁹ Department of Physics, The George Washington University, 725 21st Street NW, Washington, DC 20052, USA
- ³⁰ Astronomy, Physics and Statistics Institute of Sciences (APSIS), The George Washington University, Washington, DC 20052, USA
- ³¹ Ruhr-University Bochum, Faculty of Physics and Astronomy, Astronomical Institute, 44780 Bochum, Germany
- ³² Space Radio-Diagnostics Research Centre, University of Warmia and Mazury, ul. Romana Prawochenskiego 9, 10-719 Olsztyn, Poland
- ³³ Leibniz-Institut für Astrophysik Potsdam (AIP), An der Sternwarte 16, 14482 Potsdam, Germany
- ³⁴ ECAP. Friedrich-Alexander-University Erlangen-Nuremberg, Erwin-Rommel-Str. 1, 91058 Erlangen, Germany
- ³⁵ DESY, Platanenallee 6, 15738 Zeuthen, Germany
- ³⁶ Rijksuniversiteit Groningen, Nettelbosje 1, 9747AJ Groningen, The Netherlands
- ³⁷ Université Claude Bernard Lyon1, Ens de Lyon, CNRS, Centre de Recherche Astrophysique de Lyon, 43 Boulevard du 11 Novembre 1918, 69100 Villeurbanne, France
- ³⁸ Max-Planck-Institut für Radioastronomie, Auf dem Hügel 69, 53121 Bonn, Germany
- ³⁹ CBK PAN , Bartycka 18 A,00-716 Warsaw, Poland
- ⁴⁰ Anton Pannekoek Institute for Astronomy, University of Amsterdam, Postbus 94249, 1090 GE Amsterdam, The Netherlands
- ⁴¹ Fakultät für Physik, Universität Bielefeld, Postfach 100131, 33501 Bielefeld, Germany
- ⁴² Department of Physics and Electronics, Rhodes University, Makhanda (Grahamstown), South Africa
- ⁴³ South African Radio Astronomy Observatory, Cape Town, South Africa
- ⁴⁴ LESIA, Observatoire de Paris, CNRS, PSL, SU, UP, Place J. Janssen, 92190 Meudon, France

¹ University of Manchester, Jodrell Bank Centre for Astrophysics, Department of Physics & Astronomy, UK
e-mail: WDL1060@gmail.com

² ICRAR, Curtin University, Bentley, WA 6102, Australia

³ Ventspils International Radio Astronomy Centre, Ventspils University College, Inženieru 101, 3601, Ventspils, Latvia

⁴ Department of Physics, University of Durham, South Road, Durham DH1 3LE, UK

⁵ ASTRON, Hoogeveensedijk 4, 7990AA Dwingeloo, The Netherlands

⁶ Sterrewacht Leiden, Niels Bohrweg 2, 2333 CA, Leiden, The Netherlands

⁷ School of Physics, University College Dublin, Belfield, Dublin, Ireland