

Passivity-Preserving Model Reduction for Interconnected Systems

Citation for published version (APA):

Poort, L., Besselink, B., Fey, R., & van de Wouw, N. (2023). *Passivity-Preserving Model Reduction for Interconnected Systems*. Abstract from 42nd Benelux Meeting on Systems and Control 2023, Elspeet, Netherlands.

Document status and date:

Published: 01/03/2023

Document Version:

Accepted manuscript including changes made at the peer-review stage

Please check the document version of this publication:

- A submitted manuscript is the version of the article upon submission and before peer-review. There can be important differences between the submitted version and the official published version of record. People interested in the research are advised to contact the author for the final version of the publication, or visit the DOI to the publisher's website.
- The final author version and the galley proof are versions of the publication after peer review.
- The final published version features the final layout of the paper including the volume, issue and page numbers.

[Link to publication](#)

General rights

Copyright and moral rights for the publications made accessible in the public portal are retained by the authors and/or other copyright owners and it is a condition of accessing publications that users recognise and abide by the legal requirements associated with these rights.

- Users may download and print one copy of any publication from the public portal for the purpose of private study or research.
- You may not further distribute the material or use it for any profit-making activity or commercial gain
- You may freely distribute the URL identifying the publication in the public portal.

If the publication is distributed under the terms of Article 25fa of the Dutch Copyright Act, indicated by the "Taverne" license above, please follow below link for the End User Agreement:

www.tue.nl/taverne

Take down policy

If you believe that this document breaches copyright please contact us at:

openaccess@tue.nl

providing details and we will investigate your claim.

Passivity-Preserving Model Reduction for Interconnected Systems

Luuk Poort
Eindhoven University of Technology*
l.poort@tue.nl

Rob Fey
Eindhoven University of Technology*
r.h.b.fey@tue.nl

Bart Besselink
University of Groningen†
b.besselink@rug.nl

Nathan van de Wouw
Eindhoven University of Technology*
n.v.d.wouw@tue.nl

1 Introduction

Physical systems, such as RLC networks or structural dynamics systems, can often be modeled appropriately as an interconnection of several subsystems. These subsystems are often naturally passive, i.e., the systems do not generate energy internally, leading to complex, passive, coupled models. The complexity of these models typically prevents efficient dynamic analysis. Model reduction is thus required to attain an accurate low-order model. Usually, this is performed on subsystem level, for example by Component Mode Synthesis (CMS). Unfortunately, subsystem reduction does not explicitly ensure accuracy of the interconnected system. While there exist reduction methods to focus on the accuracy of the reduced, interconnected model, passivity and stability of this model are generally not retained.

2 Research approach

We introduce the Passive Interconnected Balancing (PIB) method to reduce models of interconnected subsystems, approximating the input-output behaviour of the interconnection, while preserving both the interconnection structure and passivity of the model. Equivalently, this new method reduces the individual subsystems, based on the input-output behaviour of the interconnection, while preserving passivity of the subsystems and interconnection.

Our approach is based on the concept of balancing, where typically the controllability and observability Gramians of a system are equalized and diagonalized to sort states by their importance to input-output behaviour. Instead of the observability Gramian, we use the available storage per subsystem, as in Positive-Real Balancing (PRB), to guarantee passivity of the reduced subsystem model [1]. Moreover, instead of the subsystem controllability Gramian, we use a partition of the controllability Gramian of the interconnected system, as with Interconnection Structure-preserving Balancing (ISB) [2]. This combination of available storage and a partition of the coupled controllability Gramian provides both passivity guarantees and accuracy of the coupled system.

*Dynamics & Control, Mechanical Engineering, Eindhoven University of Technology, PO Box 513, 5600 MB Eindhoven, The Netherlands

†Bernoulli Institute for Mathematics, Computer Science and Artificial Intelligence, University of Groningen, P.O. Box 407, 9700 AK Groningen, The Netherlands

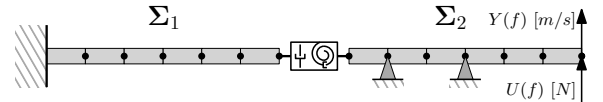


Figure 1: Schematic drawing of the coupled beam model.

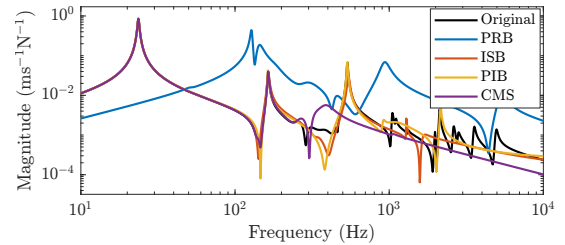


Figure 2: Magnitude plot of $|Y/U|$.

3 Numerical example

Observe the SISO system of two lightly damped Euler beams, in Figure 1, which are coupled by a translational and rotational damper. Both beam models consist of 24 states each and are reduced to 10 states each. Reduction is performed using (i) PRB, (ii) ISB, (iii), Craig-Bampton CMS reduction and (iv) the new PIB method. The resulting magnitudes of the collocated FRF is shown in Figure 2. PIB and ISB both show superior accuracy compared to the other methods. However, ISB does not preserve stability, whereas PIB preserves stability and passivity.

4 Conclusion and outlook

Passive Interconnected Balancing (PIB) both guarantees passivity preservation, interconnection-structure preservation and results in an accurate reduced coupled model. Further extensions will make it more computationally efficient, to also allow application to industry-relevant benchmarks.

References

- [1] A. C. Antoulas, *Approximation of Large-Scale Dynamical Systems*, R. C. Smith, Ed. Philadelphia: Society for Industrial and Applied Mathematics, Jan. 2005.
- [2] A. Vandendorpe and P. Van Dooren, "Model Reduction of Interconnected Systems," in *Model Order Reduction: Theory, Research Aspects and Applications*, 2008, pp. 305–321.