

An ITEA Smart mobility project

# SMART



## Monitoring and reducing congestion in Smart Cities

### Project summary

The aim of the Spatial Modelling Analytics & Real-time Tracking (SMART) project is to mitigate growing urban traffic congestion challenges and associated issues of environmental degradation, economic inefficiency and negative impacts to the quality of life of citizens. SMART Mobility will revolutionise the efficiency of traffic and commuting in cities by leveraging the capabilities of new 4D spatial technology and analysis platforms using real-time vehicle location and movement data.

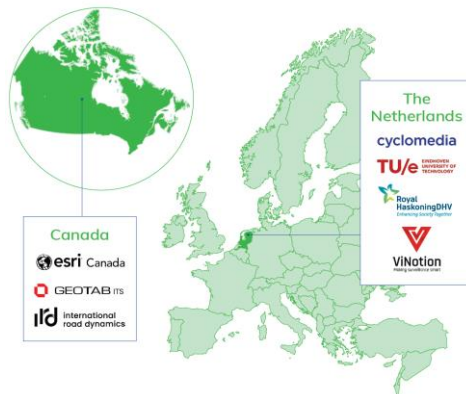
### Project duration

January 2020 - October 2023

### Expected key results / Advantages

- Smart Traffic Control to enable policies for sustainable transportation, low emissions and improved traffic throughput.
- Automatic acquisition of Map data to enable city model reconstruction for traffic control, planning and understanding.
- Common 4D Transportation GIS Platform with near real-time data analysis, visualization, and modelling.

### Consortium



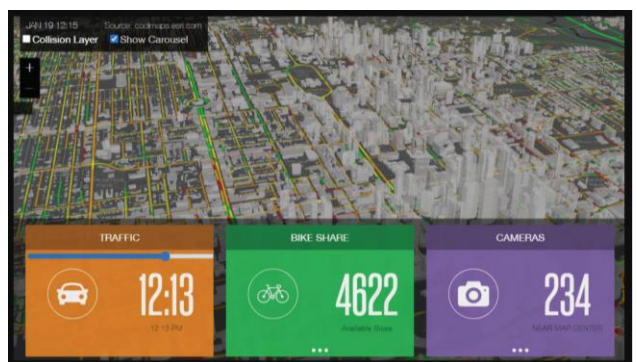
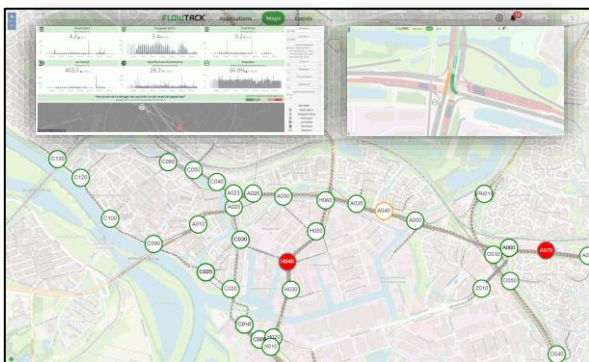
SMART project website



SCAN ME

<http://www.smart-itea.com/>

### Smart Traffic Control platform for a sustainable mobility



### Contact

Jennifer Overbury  
Esri Canada  
E: [joverbury1@esri.ca](mailto:joverbury1@esri.ca) T: +1 416 386 6462

This ITEA project is supported by:

