

An in-vitro model to test regenerative therapies for disc degeneration

Citation for published version (APA):

Dijk, van, B. G. M., Potier, E., & Ito, K. (2011). *An in-vitro model to test regenerative therapies for disc degeneration*. Poster session presented at Mate Poster Award 2011 : 16th Annual Poster Contest.

Document status and date:

Published: 01/01/2011

Document Version:

Accepted manuscript including changes made at the peer-review stage

Please check the document version of this publication:

- A submitted manuscript is the version of the article upon submission and before peer-review. There can be important differences between the submitted version and the official published version of record. People interested in the research are advised to contact the author for the final version of the publication, or visit the DOI to the publisher's website.
- The final author version and the galley proof are versions of the publication after peer review.
- The final published version features the final layout of the paper including the volume, issue and page numbers.

[Link to publication](#)

General rights

Copyright and moral rights for the publications made accessible in the public portal are retained by the authors and/or other copyright owners and it is a condition of accessing publications that users recognise and abide by the legal requirements associated with these rights.

- Users may download and print one copy of any publication from the public portal for the purpose of private study or research.
- You may not further distribute the material or use it for any profit-making activity or commercial gain
- You may freely distribute the URL identifying the publication in the public portal.

If the publication is distributed under the terms of Article 25fa of the Dutch Copyright Act, indicated by the "Taverne" license above, please follow below link for the End User Agreement:

www.tue.nl/taverne

Take down policy

If you believe that this document breaches copyright please contact us at:

openaccess@tue.nl

providing details and we will investigate your claim.

An in-vitro model to test regenerative therapies for disc degeneration

Bart van Dijk, Esther Potier and Keita Ito



Background

Regenerative therapies are promising treatments for intervertebral disc degeneration and a long-term *in vitro* model would be valuable to screen for their efficacy.

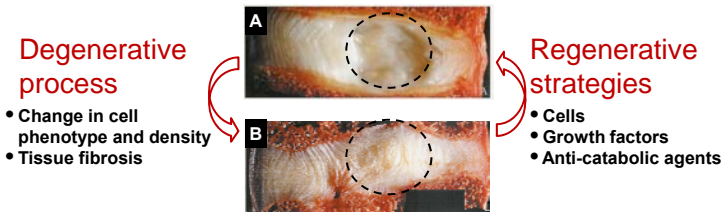


Figure 1. Healthy (A) and degenerated (B) intervertebral discs. Dashed circles; NP.

As the most substantial degenerative changes occur in the nucleus pulposus (NP), NP explant culture may be a suitable model. The aim of this study was to reproduce and maintain *in vitro* the unique NP environment which includes low oxygen, low glucose, and high osmolarity levels in long-term culture.

Methods

- NP explants from caudal discs of 24 month-old cows
- High tissue osmolarity balanced by an artificial annulus (physical constraint) or by increased medium osmolarity (raised to iso-tonic and hyper-tonic levels compared to native tissue) (Figure 2)
- Glucose and O₂ levels adjusted to standard (4.5 g/l and 21%) or physiological (1 g/l and 5%) conditions

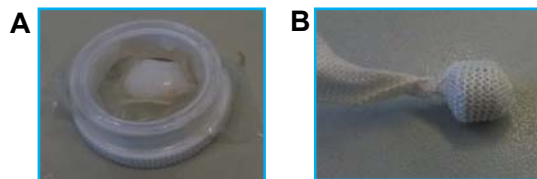


Figure 2. Explants in increased osmolarity (A) or artificial annulus (B) systems.

After 42 days measured and compared to day 0:

- Water content
- Glycosaminoglycan (GAG) content with DMMB assay
- Fixed Charge Density (FCD) calculated from GAG
- Cellular phenotype with gene expression of aggrecan, collagen type II and MMP-13
- Tissue morphology with Safranin-O /Fast Green staining

Results

Hyper-tonic PEG and artificial annulus prevented GAG loss and kept tissue FCD stable (Figure 3). However, matrix protein expression for PEG cultures was different from day 0 (Figure 4A, B). Only aggrecan expression was different for artificial annulus culture (Figure 4A). Physiological conditions were beneficial for MMP-13 gene expression (Figure 4C), but did not affect any other outcome measures.

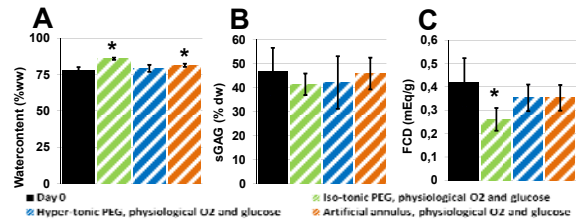


Figure 3. Water (A), sGAG (B) content, and FCD (C). Values are mean \pm St Dev, n = 5, *p < 0.05 compared to day 0.

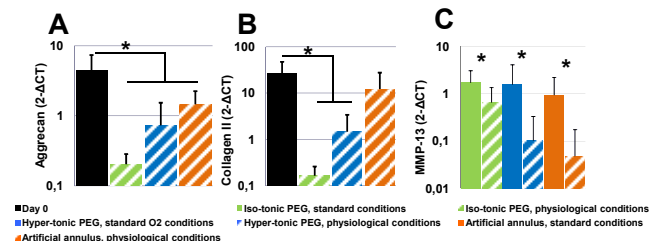


Figure 4. Aggrecan (A), collagen type II (B), and MMP-13 (C) gene expression. Values are mean \pm St Dev, n = 5, *p < 0.05 compared to day 0.

Tissue composition of both approaches resembled day 0 in physiological conditions (Figure 5).

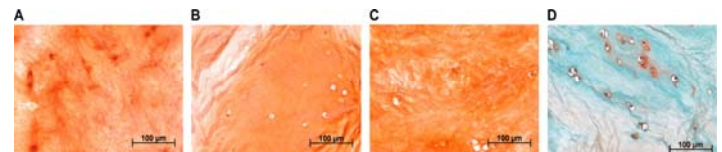


Figure 5. Safranin O/ Fast Green stained sections: Day 0 (A), hyper-tonic PEG (B), and artificial annulus (C) with physiological conditions. (D) NP explants cultured for 21 days in hypo-osmotic media when osmolarity is not balanced [1].

Discussion

Both approaches could maintain the matrix composition specific to the NP. However, artificial annulus culture kept cellular phenotype closer to native tissue and thus constitutes a more promising long-term model to test regenerative therapies. Human degenerated NP tissues are currently being cultured using this system.

[1] B.G.M. van Dijk, E. Potier, K. Ito. Culturing bovine nucleus pulposus explants by balancing medium osmolarity, Tissue Eng Part C, 2011.