

Mechanical properties of porcine coronary arteries : what is the in vivo axial strain?

Citation for published version (APA):

Broek, van den, C. N., Tuijl, van, S., Stijnen, J. M. A., Rutten, M. C. M., & Vosse, van de, F. N. (2007). *Mechanical properties of porcine coronary arteries : what is the in vivo axial strain?*. Poster session presented at Mate Poster Award 2007 : 12th Annual Poster Contest.

Document status and date:

Published: 01/01/2007

Document Version:

Publisher's PDF, also known as Version of Record (includes final page, issue and volume numbers)

Please check the document version of this publication:

- A submitted manuscript is the version of the article upon submission and before peer-review. There can be important differences between the submitted version and the official published version of record. People interested in the research are advised to contact the author for the final version of the publication, or visit the DOI to the publisher's website.
- The final author version and the galley proof are versions of the publication after peer review.
- The final published version features the final layout of the paper including the volume, issue and page numbers.

[Link to publication](#)

General rights

Copyright and moral rights for the publications made accessible in the public portal are retained by the authors and/or other copyright owners and it is a condition of accessing publications that users recognise and abide by the legal requirements associated with these rights.

- Users may download and print one copy of any publication from the public portal for the purpose of private study or research.
- You may not further distribute the material or use it for any profit-making activity or commercial gain
- You may freely distribute the URL identifying the publication in the public portal.

If the publication is distributed under the terms of Article 25fa of the Dutch Copyright Act, indicated by the "Taverne" license above, please follow below link for the End User Agreement:

www.tue.nl/taverne

Take down policy

If you believe that this document breaches copyright please contact us at:

openaccess@tue.nl

providing details and we will investigate your claim.

Mechanical properties of porcine coronary arteries: What is the in vivo axial strain?

Chantal van den Broek, Sjoerd van Tuijl, Marco Stijnen, Marcel Rutten, Frans van de Vosse
Eindhoven University of Technology, Department of Biomedical Engineering

Introduction

Knowledge of mechanical properties of living arteries is important to understand vascular function during health and disease. An effective way to study the behavior of living tissue is organ culture.

In arterial culture the artery should be loaded at in vivo levels to maintain the artery's viability. The in vivo axial strain of coronary arteries, however, is unknown. Therefore, the aim of this study is to determine the physiological axial strain of the porcine left anterior coronary artery (LAD, fig. 1a). Based on [1] it is hypothesized that:

The in vivo axial strain of an artery is the strain at which the axial force is relatively insensitive to changes in pressure.

This strain, as shown in fig. 1b, will be determined for the porcine LAD in an organ culture model. The hypothesis will be validated in an isolated beating heart experiment in which a porcine heart is loaded physiologically. Due to the pumping of the heart, a cyclic axial strain is induced to the coronaries.

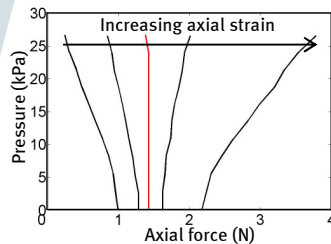
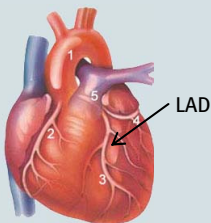


Figure 1 a) LAD on heart; b) Axial force-pressure measurement of a rat carotid artery [1]. The hypothesized pressure-axial force response of an artery at physiological strain is given in red

Material and methods

Culture model experiment (CME)

- Excision of segment of porcine LAD
- Length measurement of:
 - Segment still connected to the heart (l_{heart} , fig. 2)
 - Segment at its ex vivo (unstrained) length (l_{ev} , fig. 2)
- Cyclic pressure loading of segment in culture model (fig. 3)
- Stepwise increase of axial strain until the physiological length of the segment is found (l_{phys} , fig. 2)

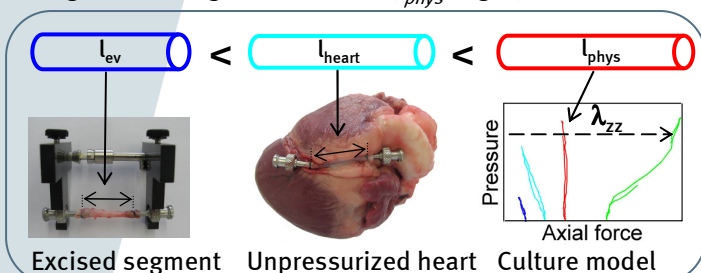


Figure 2 Definition of different segment lengths determined in culture model experiment

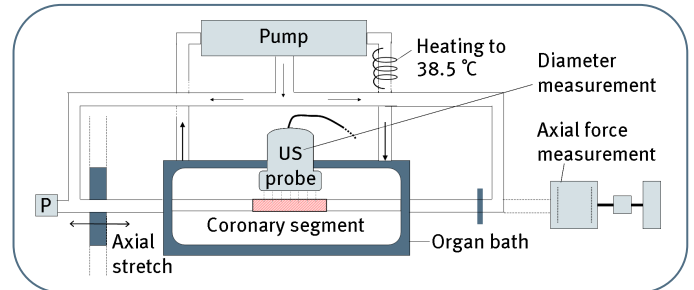


Figure 3 Porcine coronary artery culture model.

Isolated porcine heart experiment (IPHE)

- Isolated beating porcine heart (HemoLab)
- Markers in parallel to LAD (fig. 4)
- High speed camera recording of the LAD ex vivo strain amplitude during a heartbeat
- Dissection of marked segment to determine l_{heart} and l_{ev}

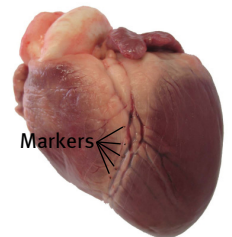


Figure 4 Markers on heart for IPHE

Results

- CME: Small spread in different axial strains (fig. 5a)
- IPHE: Preliminary results as N=1
 - $\lambda_{heart} = 1.2$, $\lambda_{phys,min} = 1.3$, $\lambda_{phys,max} = 1.38$ (fig. 5b)
 - Length change during a heart beat is 0.08 of l_{ev}

The physiological stretch derived from the CME equals the maximum stretch of an artery during a heart beat (IPHE).

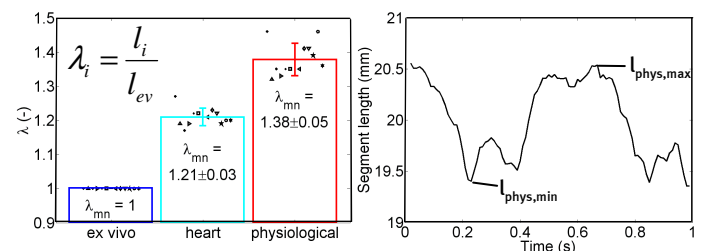


Figure 5 a) Axial stretches derived from the CME (N=12); b) Segment length during 1 heart beat in IPHE ($l_{ev} = 14.9$ mm, N=1)

Conclusions

The physiological axial strain can indeed be defined as the strain of an artery at which the axial force is relatively insensitive to changes in pressure. The average axial stretch of the porcine LAD is 1.38 ± 0.05 , which is the maximum stretch during a heart beat. More isolated beating porcine heart experiments need to be conducted to be conclusive.

References:

[1] Weizsäcker, H.W. et al. (1983). J. Biomechanics, 16, p703-715