

AAA growth predicted with wall stress

Citation for published version (APA):

Speelman, L., Bosboom, E. M. H., Schurink, G. W. H., Jacobs, M. J. H. M., & Vosse, van de, F. N. (2008). *AAA growth predicted with wall stress*. Poster session presented at Mate Poster Award 2008 : 13th Annual Poster Contest.

Document status and date:

Published: 01/01/2008

Document Version:

Publisher's PDF, also known as Version of Record (includes final page, issue and volume numbers)

Please check the document version of this publication:

- A submitted manuscript is the version of the article upon submission and before peer-review. There can be important differences between the submitted version and the official published version of record. People interested in the research are advised to contact the author for the final version of the publication, or visit the DOI to the publisher's website.
- The final author version and the galley proof are versions of the publication after peer review.
- The final published version features the final layout of the paper including the volume, issue and page numbers.

[Link to publication](#)

General rights

Copyright and moral rights for the publications made accessible in the public portal are retained by the authors and/or other copyright owners and it is a condition of accessing publications that users recognise and abide by the legal requirements associated with these rights.

- Users may download and print one copy of any publication from the public portal for the purpose of private study or research.
- You may not further distribute the material or use it for any profit-making activity or commercial gain
- You may freely distribute the URL identifying the publication in the public portal.

If the publication is distributed under the terms of Article 25fa of the Dutch Copyright Act, indicated by the "Taverne" license above, please follow below link for the End User Agreement:

www.tue.nl/taverne

Take down policy

If you believe that this document breaches copyright please contact us at:

openaccess@tue.nl

providing details and we will investigate your claim.

AAA growth predicted with wall stress

L. Speelman, E. M. H. Bosboom, G. W. H. Schurink, M. J. Jacobs, F. N. van de Vosse

Maastricht University Medical Center, Department of Biomedical Engineering, the Netherlands



Introduction

The risk of rupture of Abdominal Aortic Aneurysm (AAA) is nowadays estimated by the maximum AAA diameter and the diameter growth over time. We have shown previously that AAA wall stress, as computed with patient-specific finite element models, is strongly related to the AAA diameter [1]. Intraluminal thrombus (ILT) is found in most AAAs and may influence the computed wall stress.

Objective

The objective is to evaluate the effect of ILT on the wall stress and to determine if wall stress can be used to predict whether AAAs are stable or progressively growing.

Methods

Finite element models are created of the AAAs of 30 patients and wall stresses are computed with and without ILT. The BI-method is used in the simulations to correct for the initial stress that is present in the AAA during imaging [2]. As single wall stress parameter, the 99-percentile wall stress is used [1].

All patients are divided in 2 groups, based on diameter growth rates and the AAA characteristics are compared. Wall stresses as computed with and without ILT are compared for the stable and progressive AAAs.

Results

Due to the ILT, the stress on the inner surface of the wall is strongly reduced. Only at the location where the ILT is thickest the effect is visual on the outer surface (see arrows).

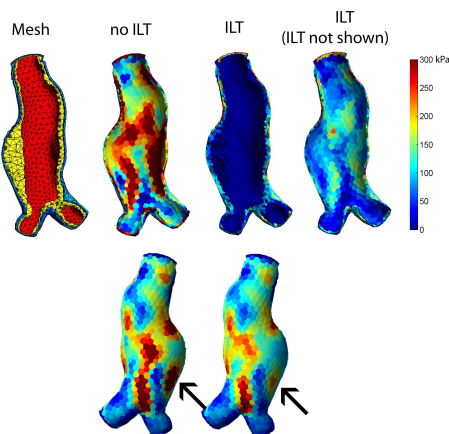


Fig. 1 Typical AAA wall stress distribution. Anterior (top) and posterior (bottom) cross-sectional views of the mesh and the wall stress with and without ILT.

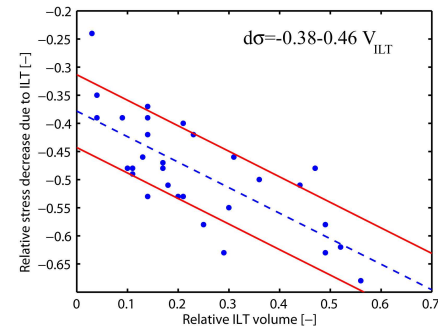


Fig. 2 Reduction in wall stress as function of relative ILT volume.

Table. 1 AAA characteristics of stable AAAs (<3mm growth per year, $n=17$) and progressive AAAs ($n=11$).

AAAs	Stable	Progressive	p-value
diameter(mm)	50 ± 3	51 ± 4	.26
AAA vol(ml)*	119 ± 29	160 ± 37	<.01
rel ILT vol(%)*	16 ± 10	35 ± 15	<.01
99-p stress(kPa)			
no ILT*	441 ± 70	517 ± 78	.01
ILT	240 ± 54	223 ± 59	.44

* Significantly different

Both the AAA volume and relative ILT volume are significantly higher for the group progressive AAAs, but the maximum diameter is equal in both groups. The stress as computed without ILT is also significantly higher, but when the ILT is included, no difference in both groups can be found.

Conclusion

- ILT reduces AAA wall stress, the effect is linearly related to the relative ILT volume.
- Progressive AAA growth is not related with the diameter but with the AAA volume and relative ILT volume.
- Higher wall stress is related to AAA growth but only when ILT is not included in the simulations.

References:

- [1] SPEELMAN L. , BOSBOOM E. M. H. , SCHURINK G. W. H. , ET AL.: Patient-Specific AAA Wall Stress Analysis: 99-percentile versus peak stress (Eur. J. Vasc. Endovasc. Surg., 2008)
- [2] DE PUTTER S. , WOLTERS B. J. , RUTTEN M. C. , ET AL.: Patient-specific initial wall stress in abdominal aortic aneurysms with a backward incremental method (J. Biomech., 2007)