

The influence of Room Acoustic Aspects on the Noise Exposure of Symphonic Orchestra Musicians

Citation for published version (APA):

Wenmaekers, R. H. C., Hak, C. C. J. M., & Luxemburg, van, L. C. J. (2011). The influence of Room Acoustic Aspects on the Noise Exposure of Symphonic Orchestra Musicians. In B. Griefahn (Ed.), *10th International Congress on Noise as a Public Health Problem* (pp. 133-140). (Proceedings of the Institute of Acoustics; Vol. 33, No. part 3). Institute of Acoustics.

Document status and date:

Published: 01/01/2011

Document Version:

Publisher's PDF, also known as Version of Record (includes final page, issue and volume numbers)

Please check the document version of this publication:

- A submitted manuscript is the version of the article upon submission and before peer-review. There can be important differences between the submitted version and the official published version of record. People interested in the research are advised to contact the author for the final version of the publication, or visit the DOI to the publisher's website.
- The final author version and the galley proof are versions of the publication after peer review.
- The final published version features the final layout of the paper including the volume, issue and page numbers.

[Link to publication](#)

General rights

Copyright and moral rights for the publications made accessible in the public portal are retained by the authors and/or other copyright owners and it is a condition of accessing publications that users recognise and abide by the legal requirements associated with these rights.

- Users may download and print one copy of any publication from the public portal for the purpose of private study or research.
- You may not further distribute the material or use it for any profit-making activity or commercial gain
- You may freely distribute the URL identifying the publication in the public portal.

If the publication is distributed under the terms of Article 25fa of the Dutch Copyright Act, indicated by the "Taverne" license above, please follow below link for the End User Agreement:

www.tue.nl/taverne

Take down policy

If you believe that this document breaches copyright please contact us at:

openaccess@tue.nl

providing details and we will investigate your claim.

The influence of Room Acoustic Aspects on the Noise Exposure of Symphonic Orchestra Musicians

R.H.C. Wenmaekers^{1,2}, C.C.J.M. Hak¹, L.C.J. van Luxemburg^{1,2}

¹ Eindhoven University of Technology – Department Architecture Building and Planning, Unit Building Physics and Systems, PO-box 513, 5600 MB Eindhoven, Netherlands

² Level Acoustics, De Rondom 10, 5612 AP Eindhoven, Netherlands

e-mail: r.h.c.wenmaekers@tue.nl

INTRODUCTION

Musicians in a symphonic orchestra are exposed to the noise of a large number of different sound sources. The noise exposure can vary largely and has many aspects of influence. One group of aspects are musical aspects, like the orchestra size and composition, the musical piece and its interpretation by the conductor and orchestra. The other group of aspects are architectural and room acoustic related which may contribute to a variation in noise exposure, independent of the musical aspects to some extent. On one hand, the size of the stage or orchestra pit may determine the distance between the musicians, which typically influences the direct and early reflected sound paths. Besides that, the room acoustics of the stage and the hall can increase the noise exposure dramatically. In this research, the contribution of stage size and acoustics to the total noise exposure and instrument balance is investigated for 7 concert halls A to G as described by Luxemburg et al. [2009].

METHOD

A model for the prediction of sound levels within a symphonic orchestra is used to investigate the influence of the architectural and room acoustical aspects. This model is based on measurements of the sound power L_w and directivity Q of the various instruments, a generic orchestra setup and measured values of the room acoustical parameters sound strength G and the early to late reflection ratio LQ_{7-40} in different concert halls. The background of the model is described in [Wenmaekers et al. 2010 and 2011] and is briefly summarized in figure 1. For every source and receiver pair, the direct sound level L_{direct} , early reflected sound level $L_{\text{early;refl}}$, late reflected sound level $L_{\text{late;refl}}$ and total sound level L_{total} is estimated.

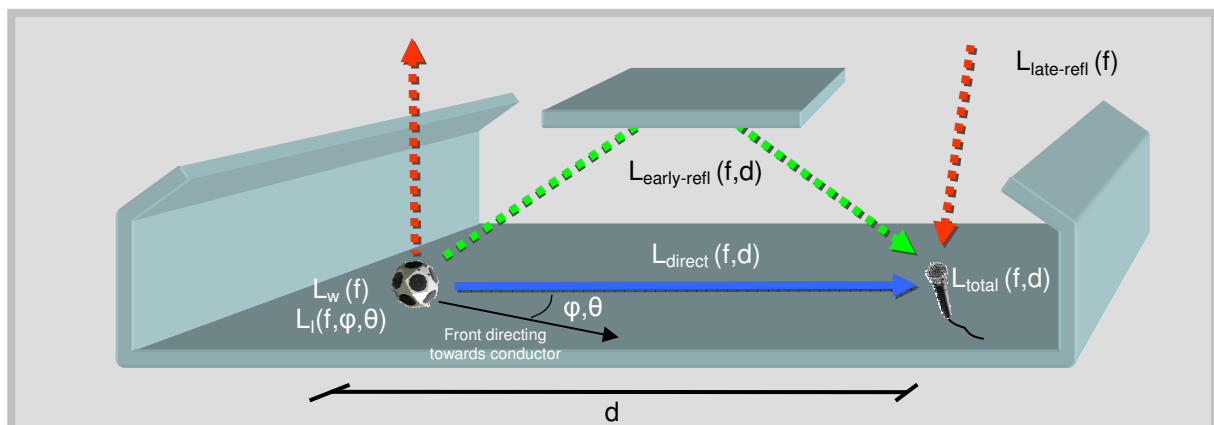


Figure 1: Summary of the source – receiver model

The directivity $L_i(f, \varphi, \theta)$ has been determined from anechoic recordings of separate musicians by Pätynen et al. [2008, 2010] for 125 Hz to 8000 Hz octave bands averaged over several tones within the instruments range. Besides that, separate instrument recordings were made of different orchestral pieces of music. From the front microphone recordings of the Mahler Symphony no. 1 sample (2:12 min) and Bruckner Symphony no. 8 sample (1:27 min) and a calibrated reference signal, the equivalent sound levels have been determined using Dirac 5. From the directivities and frontal sound levels, the sound power L_w is calculated. Figure 2 shows the A-weighted sound power level per instrument per musical piece. Only large differences occur between the two pieces at the violin sections and horn section. Because of relatively small differences between the two pieces and because the Mahler piece has a percussion part, only Mahler was used for further calculations.

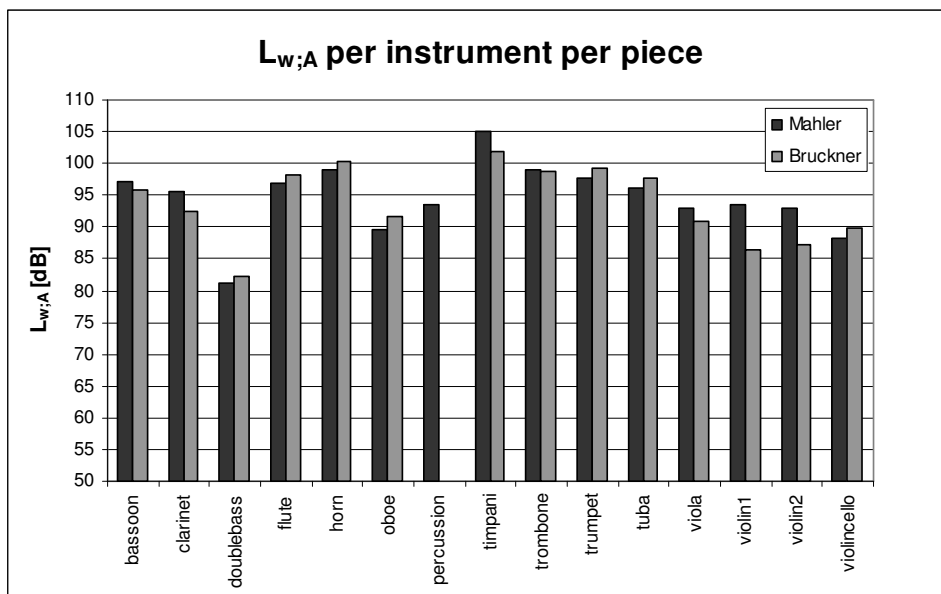


Figure 2: Average A-weighted sound power per instrument for different musical pieces

Based on the typical Mahler Symphony 1 orchestration and the typical American orchestra layout [Meyer 2009], an orchestra setup is chosen for the model with all musicians positioned on a rectangular grid, see figure 3. The receiving musicians investigated further in this paper, are highlighted in red. Musicians 56 to 74 are elevated by 0.3 m and musicians 59 to 79 are elevated by 0.6 m to simulate risers.

					clr		perc	timp	bso	trb		tba				
	59	60	61	62	flu	81	82	80	obo	75	76	77	78	79		
hms	56	57	58	63	64	65	66	67	68	69	70	71	72	73	74	
	23	24	25	48	49	50	51	52	53	54	55	trp				
vi2	17	18	19	20	21	22		30	31	32	33	vla				
	11	12	13	14	15	16		26	27	28	29		cel	46	47	dbl
	6	7	8	9	10					38	39	40	41	44	45	
vi1	1	2	3	4	5			100	cond	34	35	36	37	42	43	

Figure 3: Generic orchestra setup for Mahler Symphony 1 (receivers used in paper are marked red)

Strings: 1-14: 1st violin, 15-25: 2nd violin, 26-33: viola, 34-41: violoncello, 42-47: double bass
 Woodwinds: 48-51: flute, 52-55: oboe, 63-66: clarinet, 67-70: bassoon
 Brass: 71-74: trumpet, 75-78: trombone, 79: tuba
 Separate instruments: 56-62: french horn, 80: timpani, 81-82: percussion

RESULTS

To study the impact of room acoustics on the noise exposure the contribution of each instrument (82) is calculated for all receiver positions (83). The contribution is subdivided in direct, early, late and total level and calculated for 7 octave bands and for A-weighted spectrum. All calculations have been performed for hall A to hall G [Luxemburg et al. 2009]. In total this yields over 1.5 million calculation results.

In the next paragraphs, only results are presented for hall C with a relatively high amount of early sound and low amount of late sound; and hall F with a relatively low amount of early sound and high amount of late sound. The same mutual distance between musicians is used to simulate average stage size: 1.3 m (width) and 1.6 m (depth), see table 1. All presented values are A-weighted.

Figure 4 shows the mapping of the exposure level contribution of every individual instrument towards the receivers 8, 41, 63 and 71 per room acoustical parameter for hall C. In the direct sound, the highest contribution is made by the instruments close to the receiver with a large spatial decay rate. The sound power of the instruments seems less distinct, but also shows some influence. In the early reflected sound, less high individual levels occur and the contribution is more spread over the orchestra, clearly showing a stronger contribution of louder instruments. This is even clearer in the late reflected sound, which is only dependant on the sound power of the instruments and the late sound strength of the hall. This results in the same graph for every different receiver. Finally, the total level shows that both distance and sound power are important factors, so even distant instruments can have a large contribution to the total noise level at a receiving position. Also, the highest individual noise levels are produced close to the receiver but the early and late reflected sound may have a large contribution to the noise exposure of the full orchestra.

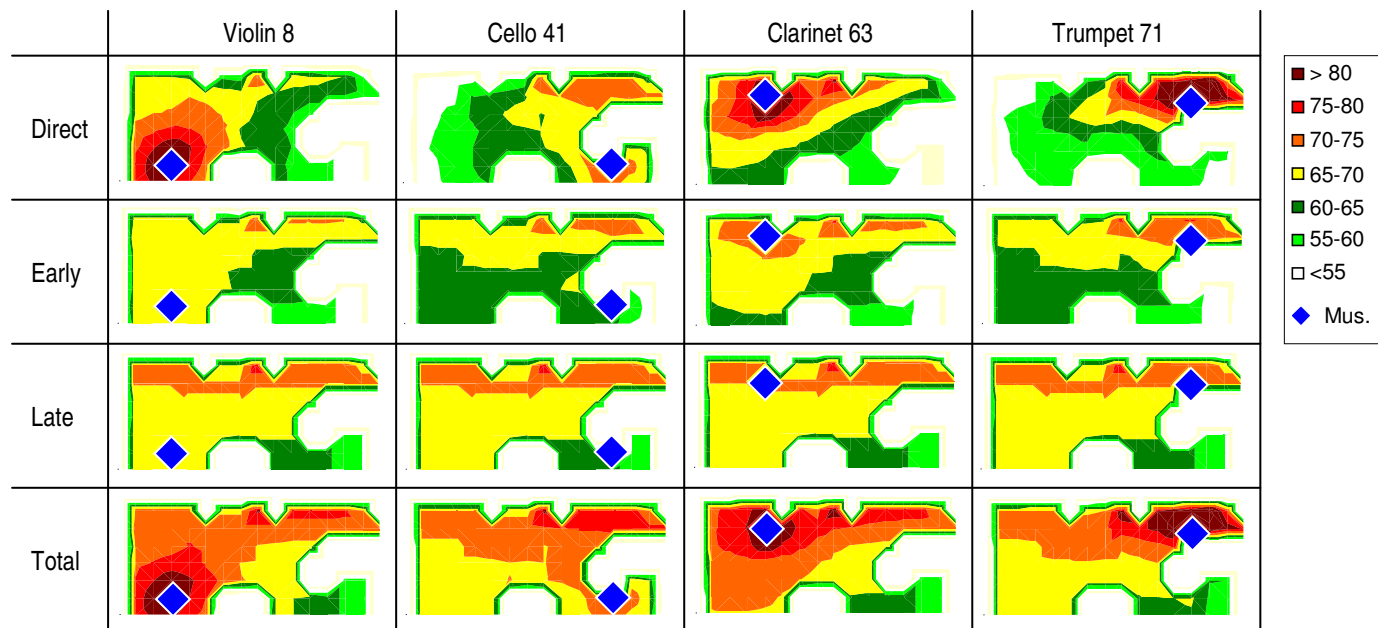


Figure 4: Contribution to noise exposure level at single musician from all other musicians (hall C)

Figures 5 to 8 show the balance of the contribution to the noise exposure level of different instrument groups in hall C and hall F at receiver position 8, 41, 63 and 71 respectively. The total contribution of each instrument group on the exposure level is shown for every room acoustical aspect. The presented values show energetically summed levels over all instruments within the same group. Also, the exposure level of the own instrument is presented using dashed bars. The results show that in most cases, the exposure level of closer instrument groups is mainly determined by direct sound transfer while the exposure level of distant instrument groups is mainly determined by late reflected sound. Also, in most cases the noise exposure from the own instrument group is the highest, except for the cello, and the noise exposure from the loudest group is higher than from the own instrument in all cases. In both halls, the late reflected sound is louder than the early reflected sound. However, in hall C, for distant instrument groups, the early reflected sound can be louder than the direct sound, while in hall F, the direct sound is always louder than the early sound.

Figure 9 shows the exposure level of the full orchestra for every instrument group per room acoustical aspect in hall C and hall F. Also, the total exposure level of the own instrument within its group is presented using dashed bars. The presented values show arithmetically average levels over all instruments within the same group. Results show that, for hall F, the noise exposure from early sound is > 5 dB(A) lower than from late sound, while in hall C, the noise exposure from early sound is < 5 dB(A) lower than from late sound. Differences between instrument groups can rise up to 5 dB(A). It also shows that the contribution of own, direct, early and late sound can be in the same order of magnitude.

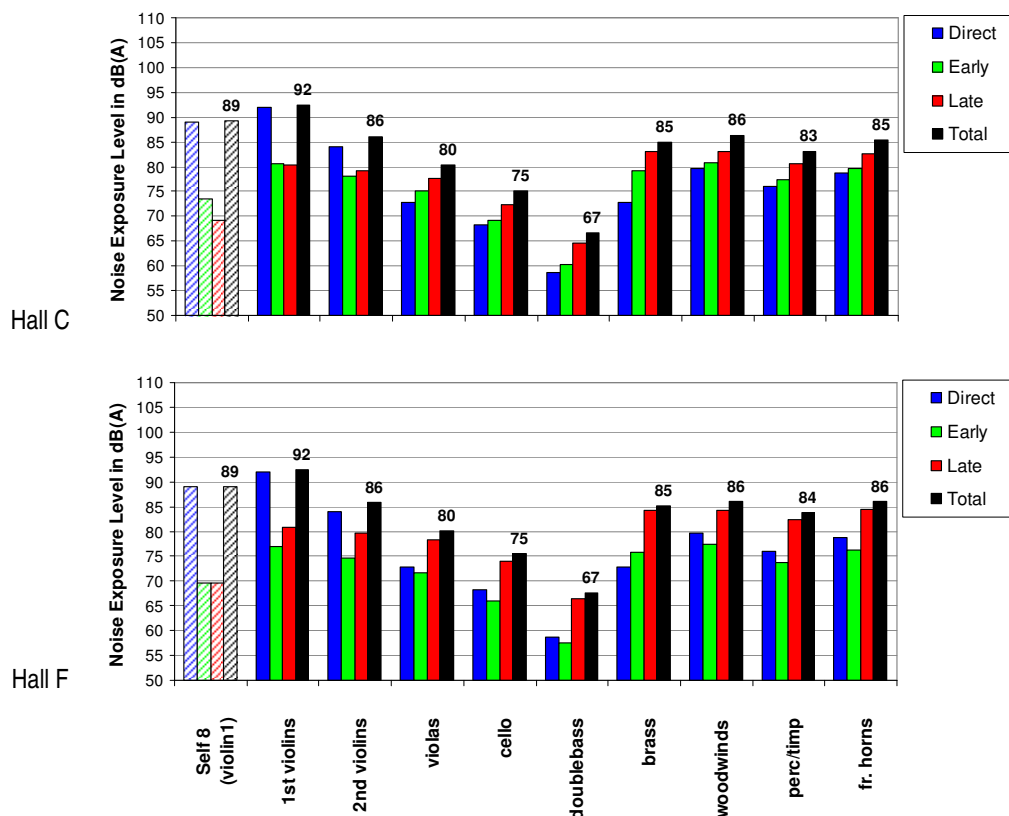


Figure 5: noise exposure balance: violin pos. 8

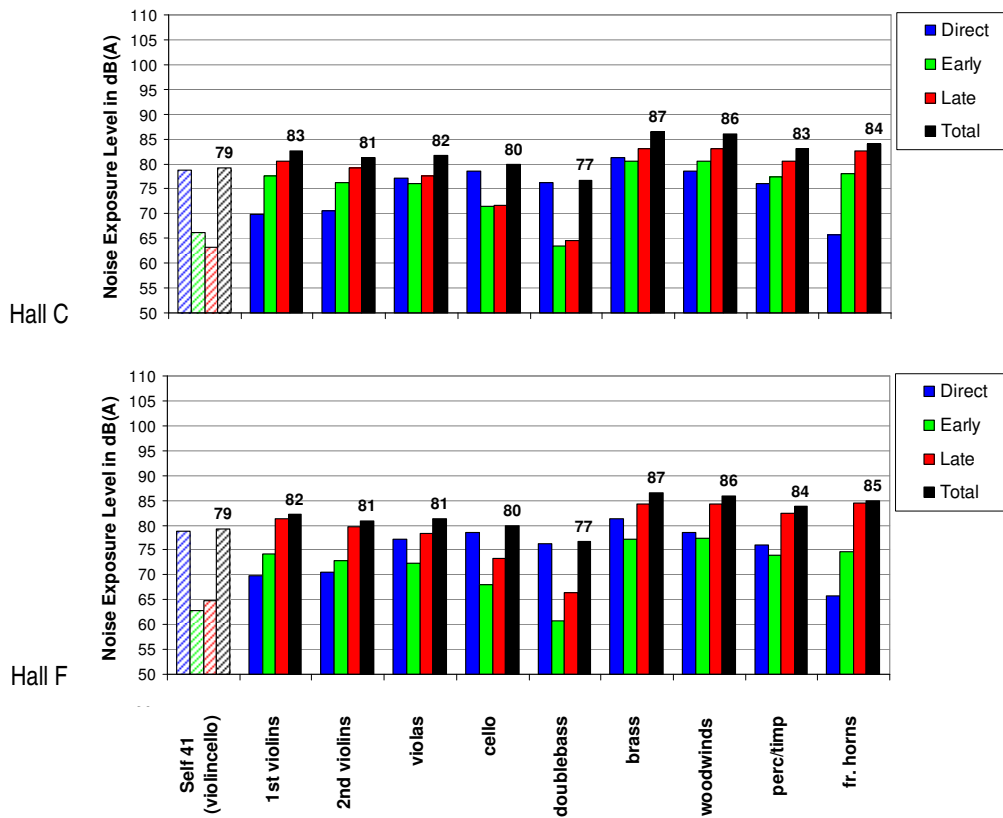


Figure 6: noise exposure balance: cello pos. 41

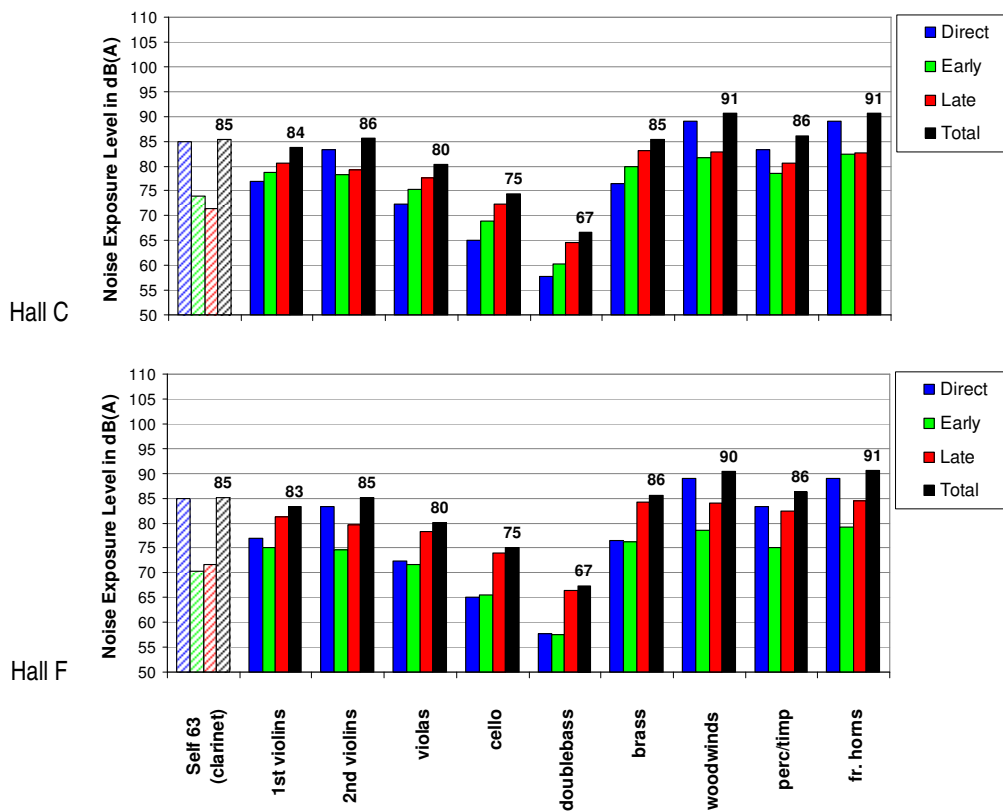


Figure 7: noise exposure balance: clarinet pos. 63

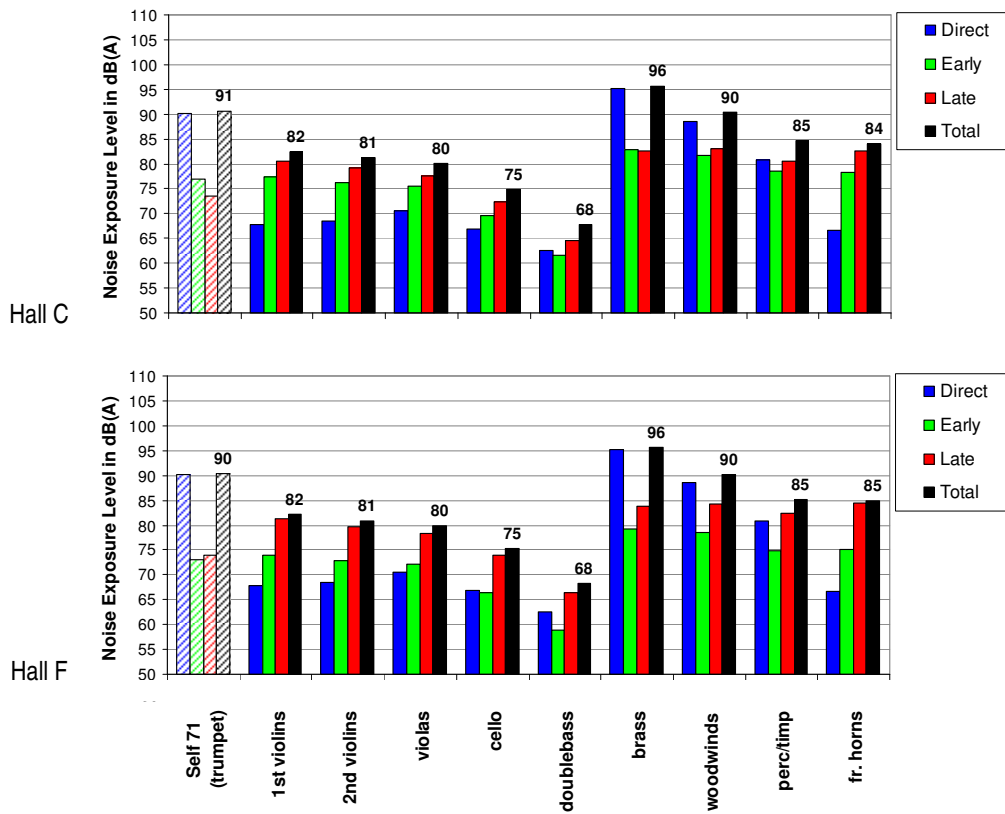


Figure 8: noise exposure balance: trumpet pos. 71

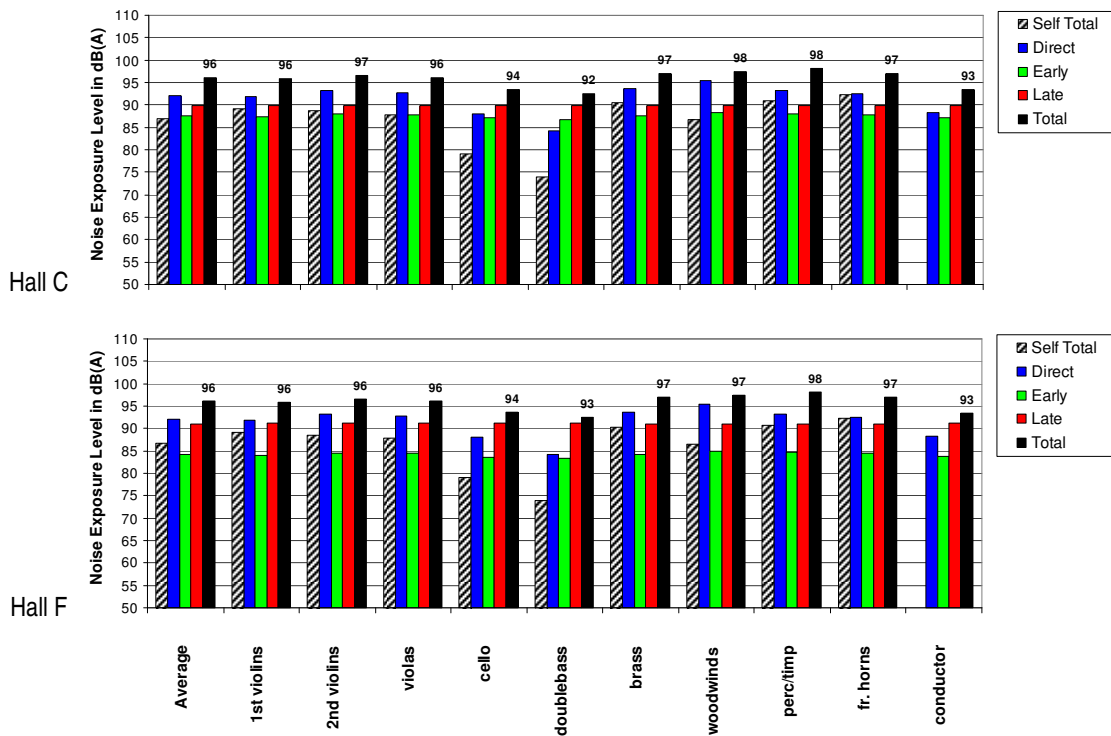


Figure 9: Total noise exposure per acoustical aspect and instrument group

The influence of stage size is investigated for the stages of halls B to G. The dimensions and room acoustical properties of the stages are summarized in table 1. Figure 10a shows the average noise exposure level of all musicians for every concert hall stage for every room acoustical aspect using an equal mutual distance of 1.3 m (width) and 1.6 m (depth). Figure 10b shows the same graph but with the orchestra setup (figure 3) stretched out over each stage, in accordance with the actual maximum mutual distances, see table 1. The results show that only the direct exposure level is clearly influenced by the stage size, with differences up to 3 dB(A) between the different halls. However, the total exposure level is affected by the stage size by less than 1 dB(A). Finally, the maximum difference in average total noise exposure level between the different stages when taking into account the stage size is 1.8 dB(A).

Table 1: Concert hall stage properties

hall	width (w)	depth (d)	mutual distance w	mutual distance d	G ₇₋₄₀ ***	G _{40-inf} ***	LQ ₇₋₄₀ ***
A*	-	-	-	-	0.6	5.7	-4.3
B	16.4	11.2	1.1	1.4	2.8	8.6	-4.5
C	18.0	11.5	1.2	1.4	4.2	6.1	-0.4
D	20.4	13.7	1.4	1.7	1.1	6.4	-4.2
E	17.4	11.7	1.2	1.5	0.7	5.3	-3.6
F	21.6	15.0**	1.4	1.9	-1.0	7.8	-8.2
G	17.5	12.6	1.2	1.6	0.9	7.0	-5.1
Average	18.6	12.6	1.3	1.6	1.3	6.7	-4.3

* Stage A is not a rectangular stage, so it cannot be defined by width and depth. Therefore it has not been used.

** The real depth of the stage in hall E is 17.5 m, however it assumed that a maximum of 15 m is used by the orchestra

*** Average of 500 Hz and 1000 Hz averaged over 36 source-receiver combinations per stage [Wenmaekers et al. 2010]

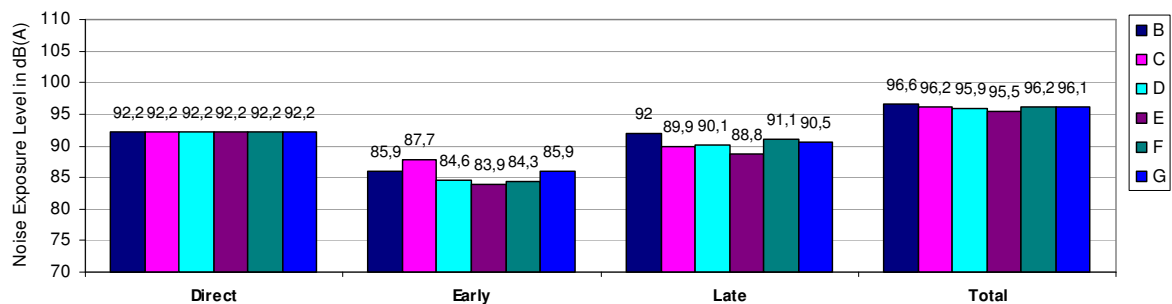


Figure 10a: Musician average noise exposure per acoustical aspect per hall – average stage size

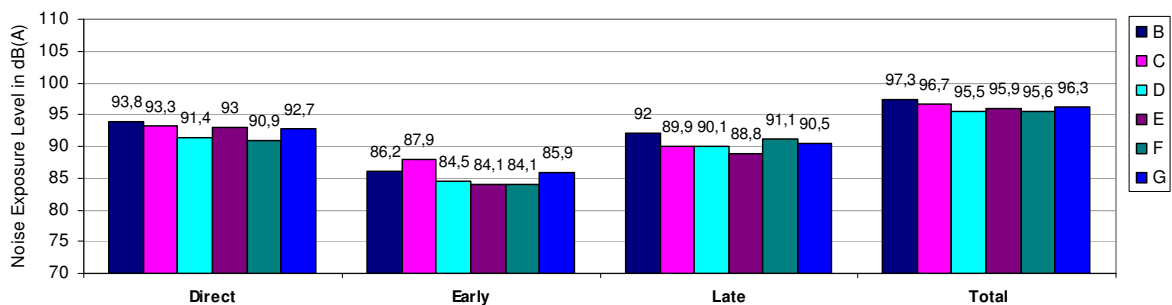


Figure 10b: Musician average exposure per acoustical aspect per hall – actual stage size

FURTHER RESEARCH

The presented work is a result of a feasibility study for developing a model to estimate the sound levels within an orchestra. It is shown that the model has much potential for studying the influence of architectural and acoustical aspects on the noise exposure of musicians in a symphonic orchestra. In future, it would be interesting to use the model to study the impact of screens between musicians and different orchestra setups on the noise exposure. Also, more different types of stage environments could be analysed, like orchestra pits and theatre stages. It is shown that the model can give valuable insight in the sound level balance of different instruments in a symphonic orchestra. The results could also be used to study the effect of orchestra setup and room acoustics on ensemble playing [Gade 2010].

The impact of some assumptions and simplifications need further investigation. The directivity of the instruments and attenuation by the orchestra is not taken into account in the measured room acoustical parameters which may result in an overestimation of the early reflected sound [Dammerud 2010]. Also, the time transition point between early and late reflected sound of 40 ms needs further investigation [Wenmaekers 2010]. Furthermore, an estimation is made of the own instruments sound level by using a small source-receiver distance using the far field sound power and directivity, while in reality the listener is in the instruments near field.

ACKNOWLEDGEMENTS

The author wishes to thank J. Pätynen for discussion related to this work and J. Pätynen, V. Pulkki and T. Lokki for sharing their instrument directivity data and anechoic recordings.

REFERENCES

- Braak, E.W.M. Van den, Luxemburg, L.C.J. van (2008), "New (stage) parameter for conductor's acoustics?", Proceedings of the 155th ASA conference, Paris 2008
- Dammerud, J.J. (2010), "Stage acoustics for symphony orchestras in concert halls", PHD thesis, Department of Architecture and Civil Engineering, University of Bath
- Gade, A.C. (2010), "Acoustics for symphony orchestras; status after three decades of experimental research", proc. of International symposium on room acoustics, IRSA 2010.
- Luxemburg, L.C.J. van, Heijnen, P.H., Kivits, M., Hak, C.C.J.M., (2009), "Stage acoustics experiments on 7 stages of concert halls in the Netherlands", Proceedings of Internoise 2009 Ottawa, Canada
- Meyer, J. (2009), "Acoustics and the Performance of Music", 5th ed., Springer, New York, USA, 2009.
- Pätynen, J., Pulkki, V., Lokki, T., (2008): "Anechoic Recording System for Symphony Orchestra", *acta acustica united with Acustica*, Hirzel, 2008, Vol. 94 (2008) 856 – 865
- Pätynen, J., Lokki, T., (2010): "Directivities of Symphony Orchestra Instruments", *acta acustica united with Acustica*, Hirzel, 2010, Vol. 96 (2010) 138 – 167
- Wenmaekers, R.H.C., Hak, C.C.J.M., Luxemburg, L.C.J. van (2010). "The influence of the orchestra on stage acoustics", Paper Dutch Acoustical Society 24 november 2010.
- Wenmaekers, R.H.C., Hak, C.C.J.M., Luxemburg, L.C.J. van (2011). "A Model for the prediction of Sound Levels within a Symphonic Orchestra based on measured Sound Strength", proceedings of Forum Acusticum 2011, Aalborg.